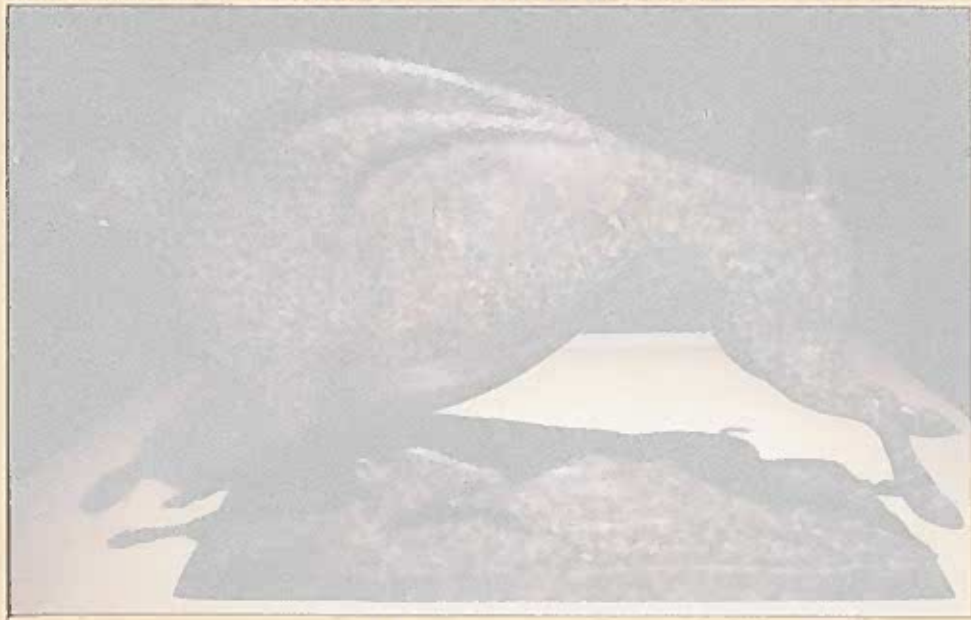


BUFFALO BILL HISTORICAL CENTER | CODY, WYOMING



ANNUAL REPORT

2000

## CONTENTS

2	Chairman's Report
3	Director's Report
10	Board of Trustees
12	Annual Fund Donors
15	Contributions
17	Members & Patrons
26	Acquisitions
33	Gifts in Kind
34	Volunteers
35	Staff
1A	Financial Review

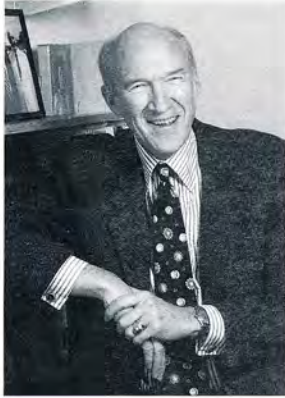


Francis Yellow, Lakota (Sioux), (b. 1954).  
*Tatanka Wan, A Buffalo Bull*, 1993. Bronze.  
Gift of Dr. Patricia Hutinger. *Buffalo and  
the People Gallery*, Plains Indian Museum.  
Sean Campbell photo.



# CHAIRMAN'S REPORT

By Alan K. Simpson



The year 2000 was even better for us than '99! Look at the numbers for our Capital Campaign. We met our goal and then we set the goal even higher! How's that for progress?! We have surely raised some record numbers and now we're going to get out there and bust some more records! To each of you who have contributed so unselfishly to this effort, our sincere thanks. You make possible all that we do.

Adding to all of our regular programs and events during this past year, we also were thrilled with the opening of the John James Audubon exhibition. Curator Sarah Boehme and Associate Director Wally Reber designed a world-class exhibition that is now literally traveling the world. The new Central Utilities Plant, though perhaps not quite so exciting to some, was a real breakthrough. We have now modernized all of our utilities systems in a manner to serve our continuing needs through the coming decades.

We then came to the moment we were all waiting for — the opening of the reinterpreted Plains Indian Museum! It was beyond all of our expectations. I'm dead serious when I say that this is surely another world-class offering from the Buffalo Bill Historical Center. Curator Emma Hansen and her crew magically transformed this museum into an absolutely resplendent showcase of Plains Indian heritage and art. Were you here for the opening? You would not have wanted to miss it. The ceremony, the processional, the buffalo feast, and the accompanying Plains Indian Museum Powwow, all intertwined during the same weekend. What a glorious beginning for a great and distinctive museum!



Finally, we saw the moment we have worked toward for a very long time. We broke ground to begin construction of the magnificent Draper Museum of Natural History. This will add 55,000 square feet to the Historical Center and it will concentrate on the relationship between humans and nature, and bring a new emphasis for visitation by families, effectively tying all of our museums together for the education and enjoyment of our thousands of annual visitors. Our steady, dedicated, generous trustee Nancy-Carroll Draper has made all of this a reality. A toast to her!!

What a thrill it is for me to be leading this great organization during this time of wondrous change. What a pleasure it is to work with our fine and able staff, our deeply involved Board of Trustees, and the energetic advisory boards throughout this complex but most rewarding process. We are seeing true leadership from all of them as we take on the many challenges of the 21st century. Thanks always, to the scores of volunteers who are continuing to serve the Buffalo Bill Historical Center in so many vital and important ways. I am so very pleased and honored to be aboard and am inspired by your participation in all of our endeavors.

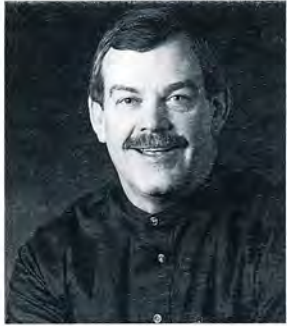


Top: opening ceremony for Friday, June 16, 2000 reinstallation of the Plains Indian Museum on June 16, 2000.

Pictured left to right are: Renee Kewley, Jacqueline Buffington, Shirley Scherer, Freda Goodsell, Emma Hansen, Alan K. Simpson, Harriet Spencer, Arthur Amiotte, Curly Bear Wagner, Joe Medicine Crow, and Darwin St. Clair. Left: Blackfeet Warriors on the *Seasons of Life* mezzanine level above *People of the Plateau* cases in the Plains Indian Museum.



By B. Byron Price



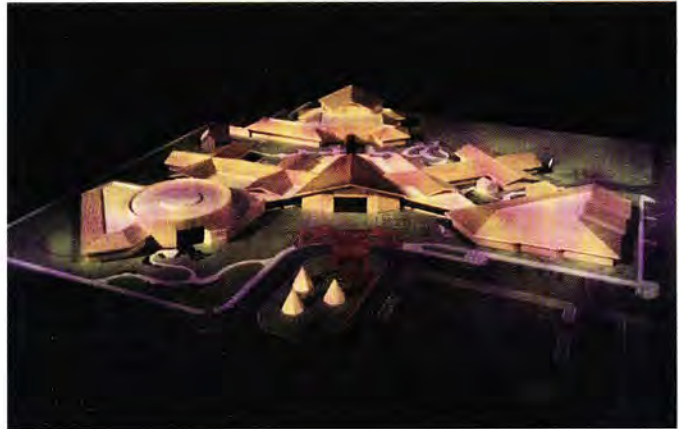
Change and growth marked the entrance of the Buffalo Bill Historical Center into the new millennium. In 2000 we unveiled a new Plains Indian Museum, opened a major national traveling exhibition, overhauled and enhanced our technological infrastructure and broke ground for the Draper Museum of Natural History. At the same time the museum maintained the stellar educational and public programming schedule that our patrons have come to expect. Support for the diverse and growing needs of the Buffalo Bill Historical Center demanded a vigorous and ongoing development effort.

## EXHIBITIONS AND COLLECTIONS

The long-awaited task of reinstalling and reinterpreting the Plains Indian Museum began in late 1999 with the removal of existing collections and two-decade old exhibits. More dynamic and interactive interpretive exhibits, designed for a variety of audiences and supported by the best in recent scholarship, replaced these largely static displays. Curator Emma Hansen, assisted by a team of staff members and the distinguished members of the Plains Indian Museum advisory board spent five years implementing the changes. The Grand Opening celebration, held during Powwow weekend in June, included a specially prepared buffalo feast for Powwow dancers, their families, donors and other special guests of the museum. Speakers at the dedication included Joe Medicine Crow, Lloyd Kiva New, Harriet Stuart Spencer, Curly Bear Wagner, Alan Simpson, Byron Price, and Emma Hansen. Already the subject of widespread acclaim, the Historical Center's new Plains Indian Museum is a powerful testament to the perseverance of Native peoples in the face of adversity.

*Arapaho and Shoshone of Wind River* debuted on November 9th as the inaugural exhibition of the Plains Indian Museum's Special Exhibition Gallery. More than 150 people braved snow and freezing temperatures to attend the Patron's opening, which included a dance performance by the Traditional Club of Wyoming Indian High School. The exhibit opening coincided with the museum's American Indian Heritage Celebration during which Arapaho and Shoshone tribal historians, artists, dancers, and singers provided three days of programming for children and families.

In October, museum patron Nancy-Carroll Draper donned a hard hat and operated the backhoe that broke ground for the new Draper Museum of Natural History. Construction on the



Top: Architect's model of the Draper Museum of Natural History addition to the Buffalo Bill Historical Center.  
Bottom: Ground breaking for the Draper Museum of Natural History took place on October 4, 2000 with Nancy-Carroll Draper at the controls. Photo by Sean Campbell.

\$17 million facility commenced immediately and left everyone looking forward to its opening in spring 2002. As workers began to tie the new addition into the existing building, our staff settled into a hard-hat mode and for the rest of the year became accustomed to working to the rhythms of jackhammers and





View of *Arapaho and Shoshone of Wind River* exhibition, opened on November 10, 2000 in the *Special Exhibition Gallery*, Plains Indian Museum.

other power tools.

*John James Audubon in the West: The Last Expedition: Mammals of North America*, opened at the Buffalo Bill Historical Center on July 2nd and, after a successful summer run, moved to the Academy of Natural Sciences in Philadelphia. Future venues in 2001 include the Houston Museum of Natural Sciences in Texas and the Autry Museum of Western Heritage in Los Angeles, California. Sarah Boehme, the John S. Bugas Curator of the Whitney Gallery of Western Art, organized and Associate Director Wally Reber designed this remarkable and long overdue presentation of Audubon's quadrupeds. Made possible by a grant from the Shell Oil Company Foundation, the exhibition was accompanied by an equally outstanding catalog, published by Harry Abrams, Inc., New York, with essays written by Boehme and several other leading scholars in the field.

In February, the Historical Center unveiled *Novel Adventures: The Life and Writing of General Charles King*, an exhibit organized by Housel Curator Nathan Bender. The exhibit opening coincided with the Ron Bishop Western Film Seminar whose theme was the treatment of the frontier army in film. Actor Harry Carey Jr. a cast member in many John Ford westerns, was the keynote speaker at the symposium.

The traveling exhibit *Powerful Images, Persistent Voices: Portrayals of Indian America*, organized by Museums West

Consortium, of which the Buffalo Bill Historical Center is a member, completed its two-year tour. Venues in 2000 included the Heard Museum in Phoenix, Arizona, the Gilcrease Museum in Tulsa, Oklahoma and the National Museum of Wildlife Art in Jackson Hole, Wyoming.

Another of the Historical Center's traveling exhibits, *Ni'ihii: In a Good Way: Photographs of Wind River Arapaho 1976-1996* made stops in 2000 at the University of Wyoming, Laramie, Wyoming, the University of Montana Museum of Fine Art, Missoula, Montana, Fremont County Public Library, Lander, Wyoming, Michigan Technical University, Houghton, Michigan, and Estes Park Area Historical Museum, Estes Park, Colorado.

*Where the Buffalo Roam* an exhibit produced jointly by the Buffalo Bill Historical Center and the National Park Service remained a popular attraction at the Canyon Visitor Center in Yellowstone National Park.

#### VISITATION AND COMMUNICATIONS

Total attendance in 2000 was 219,641, down by 2.5% from the previous year, due in large measure to forest fires in the region in August and September. The decline in Historical Center attendance was modest compared to the 11% drop in admissions



at the east gate of Yellowstone National Park.

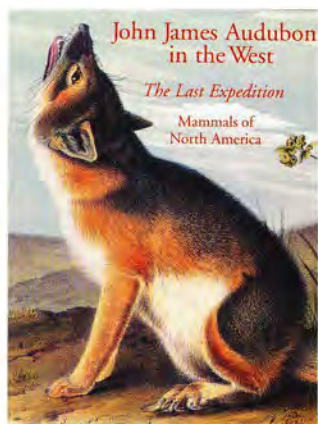
With the help of a \$94,000 grant from the Park County Travel Council, the museum mounted a more ambitious advertising effort in 2000 than in recent years. This grant enabled the Buffalo Bill Historical Center to advertise to a national, as well as, regional and local audience. Highlights in 2000 included: *AAA Tour Book*, *National Geographic Traveler*, *American Heritage*, *Wheeler's*, *Woodall's*, *Trailer Life*, *Courier*, *AAA Home & Away/Mountain West Edition*, *Cowboys & Indians*, *VIA Magazine*, *Wild West*, *Yellowstone Journal*, *SouthwestArt*. The Historical Center also participated with the state of Wyoming in a series of cooperative ads that appeared in *Better Homes and Gardens*, *Ladies Home Journal*, *Midwest Living*, *Mature Outlook*, *Country Home*, *SouthwestArt*, *Art of the West*, *ArtTalk* and *Crayola Kids*. Special advertising purchases were made in connection with the Audubon exhibition and the opening of the Plains Indian Museum.

During 2000 museum representatives attended two of the most important travel shows in North America — the Travel Industry Association Powwow show in late May and the National Tour Association show in November. These events provide one-on-one marketing opportunities to group travel leaders and are a cornerstone of our group-travel marketing program.

Each year numerous film crews, journalists and photographers visit the Buffalo Bill Historical Center in search of stories. 2000 was no exception. Numerous writers and media crews covered the Cowboys Songs and Range Ballads weekend and the Plains Indian Museum Powwow and reopening and attended several press familiarization tours. A number of foreign travel writers and film crews representing England, Italy, Japan, Germany, France, Canada and the Czech Republic also visited the center. The French contingent shot footage for a documentary on Buffalo Bill, which was screened at the Jules Verne Film Festival in Paris in the fall. Curator Paul Fees and Buffalo Bill Museum Advisory Board Chairman Bill Garlow accepted a special award presented to the museum at that film festival.

Our Publications Department continued its exemplary service throughout the year. In addition to producing a variety of brochures, posters, signage, gallery guides and exhibit labels, the publications staff found time to expand our quarterly journal *Points West* from 24 pages, 16 in full-color, to a 32 page format with 4-color throughout.

In 2000 the museum introduced a new and highly successful public relations initiative called "Fourth Fridays." On the fourth Friday of every month during the winter season, the museum remained open after hours. Visitors were treated to special gallery talks, live music and refreshments. The Center's annual Spring Open House held on May 2nd drew 1,576 visitors, while the Holiday Open House on December 9th set an attendance record as 3,612 guests enjoyed a daylong schedule of musical and dance acts, a visit from Santa, and 400 dozen cookies baked by staff and volunteers. Attendees also got to view *Santa's Forest*, a collection of thirteen decorated Christmas trees



Top: Cover of *John James Audubon: The Last Expedition: Mammals of North America*. Center: Audubon's New York studio featured in exhibition. Right: John James Audubon (1785-1851), J.T. Bowen, lithographer, *Eastern Grey Squirrel*, 1842. William E. Weiss Fund Purchase.

sponsored by local businesses and offered for bid in a silent auction, the proceeds benefiting the Center.

#### EDUCATIONAL INITIATIVES AND PUBLIC PROGRAMS

In October the Buffalo Bill Historical Center hosted its first ever Frontier Justice symposium. This event was organized by a steering committee headed by Collier-Reed Deputy Director for Collections and Education Robert Pickering. The Frontier Justice symposium was the first formal event developed under the umbrella of our newly formed Cody Institute of Western American Studies. The Cody Institute of Western American Studies is an Internet-and object-based program of education and enrichment whose audience is worldwide, and which uses



the objects and resources of the Buffalo Bill Historical Center in Cody, Wyoming.

Boasting an impressive array of speakers, the program addressed several longstanding legal issues of importance to the contemporary American West. Keynote speakers at the event included former U.S. Attorney General Griffin Bell and Drew Lewis, former U.S. Secretary of Transportation and past CEO of Union Pacific Corporation.

Frontier Justice added luster to the Center's already impressive roster of educational programs. Familiar activities such as Cowboy Songs and Range Ballads, the Plains Indian Museum Powwow, the Larom Summer Institute, and the Plains Indian Seminar continued to attract a broad audience and to help build the Center's scholarly reputation.

The faculty of the Larom Summer Institute in Western Studies featured several outstanding interpreters of the American West. Dr. Charles Preston, Curator of the Draper Museum of Natural History discussed *Managing Wildness in the Greater Yellowstone Ecosystem: Lessons from the Past, Challenges for the Future*. Virginia Scharff, Associate Professor of History, University of New Mexico, presented *Women, Mobility, and the American West*. Artist-educator, Arthur Amiotte, offered *Arts & Traditions of the Lakota and Other Northern Plains Tribes*. Dr. Ron Tyler, Director of the Texas State Historical Association and Professor of History at The University of Texas at Austin closed with *Art in the Age of Western Expansionism*.

The annual Plains Indian Seminar, which addressed the theme of Sacred Lands, enjoyed a record attendance, including several attendees from tribal colleges. Among the presenters were Joe Medicine Crow, Crow Tribal Historian; Peter Nabokov, Professor of American Indian Studies at UCLA; Gordon Yellowman, Sr., Cultural Heritage Liaison Cheyenne and Arapaho Tribes of Oklahoma; and James Riding In, Associate Professor in the School of Justice Studies, Arizona State University.

The Historical Center's Artists-in-Residency program included four artists in 2000. They were Stefan Halvorsen, Vic Runnels, Arin Waddell, and Bob Seabeck. Over the summer, more than 500 children ages 2 to 16 years old attended several dozen summer workshop classes. The Museum Discovery course continued to offer independent study credit for participating Cody High School students. The MILES Program (Museum Interpretation Learning and Enrichment for Students), funded by

a grant from the 1957 Charity Trust, enabled over 600 students from distant schools in Wyoming to experience the Historical Center's rich educational offerings firsthand. Our "Travelin' Trunks" program traveled to 230 separate destinations and reached nearly 11,000 students. The Education staff scheduled nearly 260 teacher and docent-led tours with a total audience of more than 8,300 teachers and students.

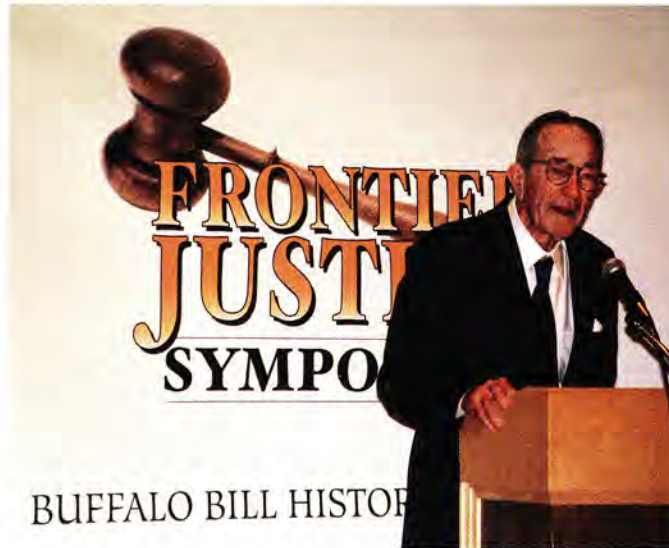
The 18th Annual Cowboy Songs and Range Ballads, held in April again brought favorite cowboy singers and musicians to the Historical Center. Educational seminars and workshop complimented two evening concerts, which entertained hundreds of western music enthusiasts. In June the 19th Annual Plains Indian Museum Powwow drew more than 5,900 dancers, drummers, and visitors. Another 1,700 guests attended the museum's 18th Annual Frontier Festival, a July celebration of Western music and frontier crafts. In August museum Board Chairman Alan Simpson and Executive Director Byron Price, participated with U.S. Olympic shooters and celebrities in the 7th Annual Buffalo Bill Celebrity Shootout. Competition in skeet, trap and sporting clays, along with clinics and demonstrations made it a great weekend.

Throughout the year the Buffalo Bill Historical Center continued to benefit from the efforts of more than 200 volunteers who contributed almost 10,000 hours of dedicated service. Many of the museum's educational and curatorial programs would not have been possible were it not for our volunteers. We cannot honor them enough.

The museum's model internship program welcomed an enthusiastic group of students representing Tulane University, George Mason University, the Universities of Wyoming, Chicago, Montana, and New Mexico, and Northwest College in Powell. These individuals received valuable training in practical museum methods and undertook a number of important projects benefiting the work of the Historical Center.

#### DEVELOPMENT AND MEMBERSHIP

The Buffalo Bill Historical Center enjoyed another successful year of development in 2000. Our *Campaign to Secure the Future* reached \$39.8 million in cash and pledges. We received more than \$358,000 in grants, nearly \$450,000 from the Annual Fund drive, and more than \$189,000 in net proceeds from the



Former Attorney General Griffin Bell addressing the first Frontier Justice Symposium held October 19-21, 2000, at the Buffalo Bill Historical Center.



Buffalo Bill Art Show & Sale and the Patrons Ball. Historical Center memberships produced an additional \$545,900 from membership and almost \$54,000 from Cody Firearms research. Finally, we recorded three Charitable Gift Annuities and a Living Trust with a combined value of \$2.9 million.

## FACILITIES AND OPERATIONS

Of all of the challenges facing the Center during 2000, the reaccreditation review by the American Association of Museums loomed large. Following the successful completion of the review process, the Center entered its third decade of full accreditation. According to the chairman of the visiting accreditation committee, "The Buffalo Bill Historical Center serves as a model for a number of exemplary practices, including (but not limited to) collections stewardship, exhibits and public programs, the use of emerging computer technologies, and sound governance and administrative practices."

Under the capable leadership of Dean Swift, the Museum Selections Gift Shop and the Great Entertainer Eatery staff have continued to keep costs under budget and increase profits, even with the decline in visitation.

Throughout the year the staff endured the temporary inconveniences of the myriad of ongoing construction projects with unflinching good humor.

## TECHNOLOGY

In 2000 the museum's technology needs continued to benefit from a major grant from the Grainger Foundation. This funding enabled the Historical Center to deliver an increasing amount of content to a distant audience through the Internet. Most of our efforts were directed in improving the Center's technological infrastructure and enhancing the Center's presence on the World Wide Web. The addition of a high-speed data line improved the electronic delivery of information many fold. Meanwhile our Website is proving increasingly popular. A sample taken near year's end totaled an average of 19,000 visits to our site per day. Evidence further suggests that users are finding the site attractive and are spending more time exploring our site.

The following highlights characterize the museum's ongoing technology effort:

- Installed its first two online exhibits on the Web: *John James Audubon* and *Charles King*. The online versions of these exhibits correspond to physical installations currently on display.
- Introduced interactive representations of the new Plains Indian Museum galleries.
- Added the media center to the website which delivers all BBHC press releases to the media community



The Plains Indian Museum Powwow, Cowboy Songs and Range Ballads, the Artist-in-residence programs, and Santa's Forest at the annual Holiday Open House are some of the events that distinguished a rich and eventful year at the Buffalo Bill Historical Center in 2000.



- electronically and allows press agencies to download images.
- Added a Web-based Educational Resource Guide that features a complete selection of resources available through our education department.
- Added a site search function, which allows users to search our Website using key words.





Michael Coleman (b. 1946). *In Sunlight Basin*, 2000. Oil on canvas. Gift of Anne Young and Jim Nielson. Chance prize at the Patron's Ball 2000, donated back to the BBHC.

- Added marketing material for the Rendezvous Royale week.
- Enhanced membership presence.

I encourage you to take a look at the site at [www.bbhc.org](http://www.bbhc.org).

#### PERSONNEL

The Buffalo Bill Historical Center is blessed with an outstanding staff that is both professional and personable. During 2000 we bid a reluctant farewell to a number of staff members and welcomed several others. In the Great Entertainer Eatery, Mary Wright retired after 8 years and Janeen Grove accepted a management position at a local business. The development office said goodbye to longtime Membership Director Jane Sanders, who moved to Greeley, CO., and Grants Coordinator Betty Kercher, who left to take an executive position with a construction company. Former

BBHC Registrar, Joanne Patterson, filled the Grants Coordinator position and Assistant Registrar Liz Holmes was promoted to Registrar. Ann Marie Donoghue was hired to fill the vacant Assistant Registrar position. Waddy Colvert replaced departing Dena Hollowell, as Cody Firearms Museum Specialist. George Mongon joined the staff as the new Deputy Director of Planning and Development.

We also bid farewell to Darin Alexander (photography), Becky Menlove (education), Debbie Steele (Draper Museum of Natural History), and Faye Bisbee (registration). Marguerite House became Executive Assistant to the Deputy Director of Collections and Education, replacing Cheryl Henry who became Executive Assistant to the BBHC Board of Trustees. Devendra Shrikhande left his job as Photography Manager to become Webmaster of the BBHC Website. Anne Marie Shriver shifted from her Curatorial Secretary position to become one of our Web Content Developers and Dr. Patricia Fazio joined the staff in the same position. Tasha Skinner



vacated the A/V Coordinator job to become the CFM/DMNH Curatorial Secretary. Rebecca West left the PIM/Whitney Curatorial Assistant position to become the full-time Plains Indian Museum Curatorial Assistant.

After a national search, Marcia Britton, was appointed to head the museum's Education Department. Chris Gimmeson was promoted from Photography Assistant to Photography Manager and Sean Campbell was hired as the new Photography Assistant. Walt Hartung became the new Draper Museum of Natural History Curatorial Assistant. Warren Newman occupied a similar position in

the Cody Firearms Museum as did Lynn Houze in the Buffalo Bill Museum. The new Curatorial Secretary for Registration and the McCracken Research Library is Tracy Livingston. Heather Stewart joined our ranks as an Education Specialist and David Thorne became the new Digital Photographer. We are fortunate to have been able to promote so many current staff to positions of greater responsibility and to fill other vacancies with such quality people. We are confident that each one will be assets to the Buffalo Bill Historical Center in the years to come.



T. Allen Lawson (b. 1963). *October Moon*, 2000. Oil on linen mounted on board. William E. Weiss Purchase Award — 2000 Buffalo Bill Art Show.



# BOARD OF TRUSTEES

Hon. Alan K. Simpson  
*Chairman*  
Cody, Wyoming

Mrs. Henry H.R. Coe  
*Chairman Emeritus*  
Cody, Wyoming

Ernest J. Goppert, Jr.  
*Vice Chairman and Secretary*  
Cody, Wyoming

Charles G. Kepler  
*Vice Chairman*  
Cody, Wyoming

James E. Nielson  
*Vice Chairman and Treasurer*  
Cody, Wyoming

Henry H.R. Coe, Jr.  
*Assistant Secretary*  
Cody, Wyoming

William C. Garlow  
*Assistant Secretary  
and Assistant Treasurer*  
Cody, Wyoming

Gordon H. Barrows  
New York, New York

George Brown  
Cody, Wyoming

Wiley T. Buchanan III  
Washington, DC

Silas S. Cathcart  
Lake Forest, Illinois

Barron G. Collier II  
Cody, Wyoming

Cortlandt S. Dietler  
Denver, Colorado

Nancy-Carroll Draper  
Cody, Wyoming

Charles W. Duncan, Jr.  
Houston, Texas

Lloyd I. Evans  
Ponca City, Oklahoma

Curt E. Gowdy  
Boston, Massachusetts

Donald W. Griffin  
Norwalk, Connecticut

Richard E. Heckert  
Kennett Square, Pennsylvania

Alan F. Horn  
Los Angeles, California

Jerry W. Housel  
Cody, Wyoming

Ray L. Hunt  
Dallas, Texas

David Leuschen  
New York, New York

Willis McDonald IV  
Cody, Wyoming

James B. Minter  
Cody, Wyoming

Nancy D. Petry  
Englewood, Colorado

Byron L. Ramsing  
Palm Beach, Florida

A.H. Rohlfing  
Darien, Connecticut

William B. Ruger, Sr.  
Newport, New Hampshire

Richard J. Schwartz  
Scarborough, New York

William Self  
Los Angeles, California

J. Laurence Sheerin  
San Antonio, Texas

Harriet Stuart Spencer  
Long Lake, Minnesota

John C. Sullivan  
Livingston, Montana

Mike Sullivan  
Dublin, Ireland

James G. Taggart  
Cody, Wyoming

Harold R. Tate  
Salt Lake City, Utah

Margo Grant Walsh  
New York, New York

C.E. Webster  
Cody, Wyoming

William U. Weiss  
Memphis, Tennessee

## HONORARY TRUSTEE

Marylou Whitney  
Saratoga Springs, New York

## EMERITUS TRUSTEES

Hon. Clifford P. Hansen  
Jackson, Wyoming

William H. Hornby  
Denver, Colorado

Joseph W. Jones  
Atlanta, Georgia

H. Peter Kriendler  
New York, New York

## WHITNEY GALLERY OF WESTERN ART ADVISORY BOARD

Nancy D. Petry  
*Chairman*  
Englewood, Colorado

Sue Anschutz-Rodgers  
Denver, Colorado

Jerry Blank  
Miami Lakes, Florida

Wiley T. Buchanan III  
Washington, DC

Carol Clark  
Amherst, Massachusetts

Nancy-Carroll Draper  
Cody, Wyoming

Alan F. Horn  
Los Angeles, California

Leverett Miller  
Fairfield, Florida

Mary F. Moore  
Cheyenne, Wyoming

Elizabeth R. Moran  
Paoli, Pennsylvania

Emily Oliver  
Sewickley, Pennsylvania

Margaret W. Scarlett  
Jackson, Wyoming

James G. Taggart  
Cody, Wyoming

William U. Weiss  
Memphis, Tennessee

Marylou Whitney  
Saratoga Springs, New York

## CODY FIREARMS MUSEUM ADVISORY BOARD

Lloyd I. Evans  
*Chairman*  
Ponca City, Oklahoma

J. Laurence Sheerin  
*Vice Chairman*  
San Antonio, Texas

H.E. Blaine  
Marietta, Georgia

Leigh F. Coffin  
Beatrice, Nebraska

Robert Donner, Jr.  
Colorado Springs, Colorado

Thomas P. Grainger  
Saratoga, Wyoming

Richard E. Heckert  
Kennett Square, Pennsylvania

George C. Hixon  
San Antonio, Texas

Warren L. Hunter  
Cody, Wyoming

Thomas K. Hutchinson  
Alton, Illinois

Kenneth O. Leonard  
Keystone, South Dakota

Robert Model  
Cody, Wyoming



Richard Oneslager  
Englewood, Colorado

William B. Ruger, Sr.  
Newport, New Hampshire

R. L. Wilson  
Hadlyne, Connecticut

John R. Woods  
St. Louis, Missouri

**BUFFALO BILL MUSEUM  
ADVISORY BOARD**

William C. Garlow  
*Chairman*  
Cody, Wyoming

Victor Alexander, Jr.  
Smyrna, Georgia

Gordon H. Barrows  
New York, New York

Steven Cranfill  
Cody, Wyoming

Mary Anne Dingus  
Midland, Texas

Mary Flitner  
Greybull, Wyoming

Walter F. Goodman, Jr.  
Dallas, Texas

Howell H. Howard  
Northfield, Illinois

William L. King  
Big Horn, Wyoming

Alan V. Lovelace, Jr.  
Cody, Wyoming

James B. Minter  
Cody, Wyoming

Colin Simpson  
Cody, Wyoming

Naoma Tate  
Salt Lake City, Utah

Thyra Thomson  
Cheyenne, Wyoming

Joel M. Wilkinson  
Metairie, Louisiana

**BUFFALO BILL MUSEUM  
ADVISORY BOARD EMERITUS**

Virginia Hayden  
Bellingham, Washington

William Self  
Los Angeles, California

**PLAINS INDIAN MUSEUM  
ADVISORY BOARD**

Harriet Stuart Spencer  
*Chairman*  
Long Lake, Minnesota

Silas S. Cathcart  
*Vice Chairman*  
Lake Forest, Illinois

Arthur Amiotte  
Custer, South Dakota

Mrs. Henry H.R. Coe  
Cody, Wyoming

Michael D. Coe  
New Haven, Connecticut

Robert D. Coe II  
Cody, Wyoming

Richard J. DeCelles  
Wolf Point, Montana

Garrett E. Goggles  
Fort Washakie, Wyoming

Joann Jundt  
Wayzata, Minnesota

Joe Medicine Crow  
Lodge Grass, Montana

Lloyd Kiva New  
Santa Fe, New Mexico

Harold Ramser, Jr.  
Murrieta, California

Kenneth Ryan  
Wolf Point, Montana

Abraham Spotted Elk, Sr.  
Ethete, Wyoming

Darwin J. St. Clair  
Fort Washakie, Wyoming

Curly Bear Wagner  
Browning, Montana

Margo Grant Walsh  
New York, New York

**MCCRACKEN RESEARCH  
LIBRARY ADVISORY BOARD**

James G. Taggart  
*Chairman*  
Cody, Wyoming

Deborah Chastain  
Saratoga, Wyoming

Barron G. Collier II  
Cody, Wyoming

Brian Dippie  
Victoria, British Columbia,  
Canada

Lloyd I. Evans  
Ponca City, Oklahoma

William H. Goetzmann  
Austin, Texas

Marjorie M. Goppert  
Cody, Wyoming

Trevor Povah  
Bozeman, Montana

Harold Ramser, Jr.  
Murrieta, California

Margaret W. Scarlett  
Jackson, Wyoming

Paul Schullery  
Yellowstone Park, Wyoming

Colin Simpson  
Cody, Wyoming

Peter K. Simpson  
Laramie, Wyoming

S.J. Tilden  
Cody, Wyoming

Margot Todd  
Cody, Wyoming

**DRAPER MUSEUM OF  
NATURAL HISTORY  
ADVISORY BOARD**

Willis McDonald IV  
*Chairman*  
Cody, Wyoming

Albert Andrews  
Minneapolis, Minnesota

Gordon H. Barrows  
New York, New York

Joan Donner  
Colorado Springs, Colorado

Nancy-Carroll Draper  
Cody, Wyoming

George C. Frison  
Laramie, Wyoming

William A. Gern  
Laramie, Wyoming

David Leuschen  
New York, New York

J. David Love  
Dubois, Wyoming

Colin Marshall  
Boston, Massachusetts

Victor Riley, Jr.  
Cody, Wyoming

Edward A. Schwartz  
Lincoln, Massachusetts

Anne Young  
Cody, Wyoming

**CODY INSTITUTE FOR  
WESTERN AMERICAN  
STUDIES  
ADVISORY BOARD**

Barron G. Collier II  
*Chairman*  
Cody, Wyoming

John C. Sullivan  
Livingston, Montana

James G. Taggart  
Cody, Wyoming



# ANNUAL FUND DONORS

555 Manufacturing, Inc.  
7D Ranch, A Wyoming LLC  
Aaron Ashley, Inc.  
Mr. & Mrs. Francis H. Abbott, Jr.  
Louis & Barbara Adams  
Albertson's, Inc.  
Ms. Jane Alexander  
Mr. David R. Allen  
Mrs. Jerrene Allen  
Mr. Terry H. Allen, Prof. (Ret.)  
Ms. Virginia L. Allen  
Allen & Company, Inc.  
Mrs. Emily M. Anders  
Mr. & Mrs. Albert Andrews, Jr.  
Mr. Vincent D. Andrus  
Anonymous Donor  
Anonymous Donor  
Anonymous Donor  
Anonymous Donor  
Ms. Cassandra Antoniou  
Mr. Vernon Armour  
Mr. Daniel C. Arnold  
Mr. Harold G. Arnold  
Mr. Kenneth J. Artis  
Dr. James B. Ashcraft  
Mr. & Mrs. Alan J. Baer  
Mr. & Mrs. Gary Bailey  
Lenox D. & Frances W. Baker  
Karen & David Bakken  
Mrs. C. W. Balis, Jr.  
Ballard Painting  
Mr. & Mrs. James E. Bama  
Mr. & Mrs. Louis P. Bansbach III  
Mr. & Mrs. Gordon H. Barrows  
Mrs. Laurie Barthold  
Richard A. Bartlett, Ph.D.  
Mr. William E. Baxter  
Mr. & Mrs. Eli Bebout  
Mr. & Mrs. Wallie L. Beckler  
Gary & Carol Begeman  
Mr. Paul G. Benedum, Jr.  
Mr. Richard L. Bennett & Ms. Ruth Horton  
Dr. Solveig Bergh  
Mrs. Jack H. Berryman  
Mr. & Mrs. Frederick Bevis  
Mrs. Ron Bishop  
Ms. Doris Lee Black  
Dr. & Mrs. Donald G. Blain  
Mr. & Mrs. Jerry Blank  
Mr. & Mrs. Mark W. Blodgett  
Mr. & Mrs. Donald E. Blumer  
Don & Betty Bo  
Mr. Daniele D. Bodini  
Mrs. Gwendolyn Boehme  
Mr. & Mrs. Roger Boehme  
The Boeing Company  
Jack & Lorraine Boeke

Ollie & Lee Boileau  
J. S. Bowman  
Don and Teri Boyd  
Mrs. Marinell Boydston  
Mr. Ernest Bradley III  
Mr. & Mrs. Joris Brinkerhoff  
Mr. Zach K. Brinkerhoff, Jr.  
Mrs. Florence Brooks  
Elizabeth Brown & Peter Howe  
Mr. & Mrs. George Brown  
Mr. Glynn Brown  
Mr. I. William Brownlee  
Bruco, Inc.  
Ms. Janet Bruning  
Wiley T. Buchanan III  
Foundation  
The Bugas Fund  
The Building Center - Cody  
Edward & Julie Bunnell  
Ms. Suzanne Burch  
Burlington Northern Santa Fe  
Foundation  
Mr. & Mrs. L. D. Burnett  
Ms. Jennifer Burnham  
Mr. Warren F. Buxton  
Mr. & Mrs. Alfred J. Cali  
Mr. & Mrs. Paul V. Cali  
Mr. & Mrs. Dyer H. Campbell  
Mr. & Mrs. Thomas K. Carpenter  
Dr. & Mrs. Leonard Carpi  
Mr. & Mrs. Win L. Carter  
Mr. & Mrs. Silas S. Cathcart  
Mr. & Mrs. William Chalmers  
Ms. Gertrude W. Chandler  
Mr. Michael E. Chappellear  
Mr. Glen Charles  
Mr. & Mrs. Glen Charles  
Kenneth and Paddy Chase  
The Hon. & Mrs. Richard B. Cheney  
Mr. & Mrs. Morris Cheston, Jr.  
Mr. & Mrs. Ronald Christie  
Nick & Linda Cladis  
Dr. Carol C. Clark & Mr. Charles Parkhurst  
Clarks Fork Foundation  
Mr. & Mrs. Ramon G. Clements  
Mr. Donald E. Coate - Coate of Arms  
The Coca-Cola Company  
Mr. & Mrs. Hiram S. Cody, Jr.  
Cody Enterprise  
Mrs. Henry H.R. Coe  
Mr. & Mrs. Henry H. Coe, Jr.  
Dr. Michael D. Coe  
Mr. Robert D. Coe  
Cowan Construction, Inc.  
Mr. & Mrs. Warren T. Cowgill

Steven & Dana Cranfill  
Mr. & Mrs. David B. Cranston  
Mr. & Ms. David G. Crow  
Charles C. & Ann Crowell III  
CTA Architects Engineers  
Mr. Brent Cummings  
Mr. & Mrs. W. B. Cunningham III  
Jim & Debbie Curlovic  
Mr. J. Michael Curtis  
Mr. & Mrs. Curtis Cushman  
The Cutshalls  
Mr. & Mrs. Jerome J. D'Arcy  
Mr. & Mrs. James R. Daly  
T. P. "Ted" Dalzell  
Mrs. Bettie Marie Daniels  
Mrs. Ruby K. Davies  
Mr. & Mrs. James S. Davis  
Mrs. Marian Lyeth Davis  
Oliver & Goldy Dawson  
Wallace C. & Mary Lee Dayton  
Fred & Betty Deering (in memory of Nick Petry)  
Mr. Victor Della  
Delta Dental Plan of Wyoming  
Ms. Mary Jean Dewers  
Mr. & Mrs. Cortlandt S. Dietler  
Mrs. Adele B. Dilschneider  
Mr. & Mrs. William Dingus  
Rick & Katie Doden  
Mr. & Mrs. Robert Donner, Jr.  
Mr. & Mrs. Richard E. Doughty  
Dr. & Mrs. Robert W. Dowling  
Mr. & Mrs. J. E. Downes, Jr.  
Ms. Katherine Y. Downes  
Mr. Richard K. Dowse  
Ms. Nancy-Carroll Draper  
Mr. Ray Duff  
Mrs. Gloria S. Duffy & Family  
Kathrine W. Dumke & E. R. Dumke, Jr.  
The Anne and C.W. Duncan, Jr. Foundation  
Mr. & Mrs. Charles W. Duncan, Jr.  
Mr. & Mrs. J. W. Duncan, Jr.  
Mr. & Mrs. C. C. Dunn, Jr.  
Carolyn & Dick Edgcomb  
Mr. Jerry Lee Edwards  
Mr. & Mrs. Jon A. Eisenhauer  
Mr. & Mrs. Tom Eldredge  
Sid & Betsy Eliason  
Mr. John P. Ellbogen  
Mr. & Mrs. LaMar T. Empey  
Mr. Cliff Ericksen  
Jennifer & Zen Ervin  
Erwin E. Smith Foundation  
Evans & Associates, Inc. -

Lloyd I. Evans  
Mr. & Mrs. Robert W. Ewing, Jr.  
Express Pipeline Partnership  
Mr. & Mrs. Eugene & Genevieve Fast  
Fayez Sarofim & Co.  
Fentress Bradburn Architects, Ltd.  
Mr. Fred S. Fiedler  
First National Bank & Trust  
First State Bank of Newcastle  
FMC Foundation  
Mr. & Mrs. Thomas Foley  
Mrs. Karl Frank  
Mr. Stuart M. Frank & Ms. Mary Malloy  
Mr. & Mrs. Russell M. Frankel  
The Franklin Mint Foundation for the Arts  
Alison & Bill Freehling  
Mr. Robert Friend  
Don & Judy Frisby  
George & June Frison  
C. W. & M. L. Fulkerson  
William Furnish  
Ms. Suzanne Gadde  
F. C. Gaetje  
Mr. Laurence H. Gardner II  
Mr. William C. Garlow  
Mr. & Mrs. Charles C. Gates  
Mr. Denis J. Gaubert III  
GE Fund  
Mr. & Mrs. James Geier  
Ms. Miriam Gilbert  
Mr. William E. Gipson  
Mr. Walter J. Gluvna  
Mr. & Mrs. Robert O. Goerlich  
William H. & Mewes Goetzmann  
David P. Gold  
Ms. Orpha C. Goodhue  
Mr. & Mrs. Walter F. Goodman, Jr.  
Mr. & Mrs. Ernest J. Goppert, Jr.  
Dr. Walter H. Gould  
Ivan & Mary Goyak  
Mr. & Mrs. Patrick A. Grant  
Mr. William S. Gray  
Mr. & Mrs. William S. Gray  
Mr. & Mrs. Warren Greatbatch  
Mr. & Mrs. William H. Griffiths  
The Rev. Daphne Grimes  
Mr. & Mrs. Pete C. Grissom  
Ms. Gina Guy  
Mr. Richard A. Haberstroh & Eileen B. Haberstroh  
Dr. & Mrs. Carroll F. Haines, Jr.



Mr. L. W. Hamilton III  
 Mr. Nathaniel P. Hamilton  
 Mr. T. B. Hamilton  
 Wilton & Camille Hammond  
 John L. & Deanna Hanes  
 Mr. Carl C. Hansen  
 Mr. Richard C. Hansen  
 Ms. Marguerite D. Hark  
 Ms. Patricia J. Harrington  
 Mr. Michael Harrison  
 Mrs. Augustin S. Hart, Jr.  
 Mr. & Mrs. Peter H. Hassrick  
 Mr. & Mrs. Will H. Hays, Jr.  
 Mr. & Mrs. Richard E. Heckert  
 Mr. Richard A. Heise, Sr.  
 Mr. & Mrs. Gail R. Hendricks  
 Mrs. Margaret R. Herman  
 Dr. & Mrs. Lee K. Hermann  
 Loren & Birgit Hershey  
 Mr. James W. Hewitt  
 Mr. & Mrs. Richard W. Higgins  
 Mr. & Mrs. Edward H. Hill  
 Hillcrest Spring Water, Inc.  
 Mrs. Joy R. Hilliard  
 Hinze Oil Company  
 Tim & Karen Hixon  
 Mr. John Hollins, Jr.  
 Mr. & Mrs. Richard L. Hollow  
 Mr. & Mrs. Edward P. Honnen  
 Cindy & Alan Horn  
 Hornady Manufacturing  
 Company  
 Mrs. Clella J. House  
 Mr. Jerry W. Housel  
 Mr. Kelly Howie  
 Mr. Roy M. Huffington  
 Mr. & Mrs. Thomas Hugel  
 Mr. & Mrs. Dennis Hummel  
 Mr. & Mrs. Warren L. Hunter  
 Hunter Woodworks, Inc. – Bill &  
 Ruthie Hunter  
 Mr. & Mrs. Wilson Hurley  
 Mr. Edward J. Husemann  
 John & Anne Huston  
 Mr. & Mrs. Thomas K. Hutchinson  
 Mr. James H. Hutchison  
 Dr. Patricia L. Hutinger  
 IBM International Foundation  
 Illinois Tool Works  
 Greg & K.T. Irvin  
 Mr. Jeffery C. Isble  
 J Bar 9 Ranch  
 Mrs. Meri Jaye  
 Mrs. Sylvia Evelyn Jenkins  
 Mrs. William R. Jensen  
 Eric Johanson, Johanson  
 Dielectrics  
 Mr. Darrell Johnson  
 Mr. & Mrs. George F. Johnson  
 Mr. & Mrs. Wallace H. Johnson

Alan & Alayne Jones  
 Mr. & Mrs. Joseph W. Jones  
 Mr. & Mrs. T. J. Jones, Jr.  
 Mr. & Mrs. Edward C. Joullian  
 Just So Charitable Foundation  
 Mr. & Mrs. Jay Kanter  
 Ms. Doneene J. Kaufman  
 KB Commercial Products  
 Ms. Laura E. Keith  
 Mr. Robert J. Keith III  
 Pat & Connie Keller  
 Kelly Inn  
 Mr. & Mrs. John W. Kelsey  
 Mr. & Mrs. Robert C. Kem  
 Mr. Frank Kenna  
 Kennecott Energy Company  
 Mr. & Mrs. Leo J. Kenney  
 Mr. & Mrs. Charles G. Kepler  
 Mr. & Mrs. Dallas P. Kerr  
 Ms. Beverly J. Ketter  
 Mr. Peter B. Kibbee  
 Mr. Robert H. Kieckhefer  
 Mrs. Josephine Klein  
 Mr. William P. Kline  
 David H. Knight  
 Ms. Ann B. Knox  
 Dr. & Mrs. Frank Kopecky  
 Ms. Evelyn H. Krusko  
 Dr. William G. Laatsch  
 Mr. Merwyn E. Lancaster  
 Mr. & Mrs. Richard B. Land  
 Mr. & Mrs. Robert L. Largura  
 Mr. Charles Larkin  
 Barbara Law – Seams Like  
 Yesterday  
 Mr. James R. Lawson  
 The Robert M. Lee Foundation  
 Martha & B. Richard Lenington  
 Mr. Bruce Leven  
 Mrs. William C. Liedtke, Jr.  
 Life Enrichment Foundation –  
 Foster & Lynn Friess  
 H. A. & Mary Linton 1992 Trust  
 Mr. & Mrs. Edmund W. Littlefield  
 Livingston Enterprise  
 Mrs. Phil Long  
 Mr. Neal L. Longanbach  
 Mr. & Mrs. John L. Love  
 Alan V. & Melanie M. Lovelace  
 Mr. Vincent Lucchesi  
 David Lukens MD  
 Mr. John Lunt  
 Mr. G. Robert Lyles, Jr.  
 Mr. Herbert A. Lyman  
 Mr. & Mrs. Wilford C. Lyon, Jr.  
 Mr. T. C. Lyster  
 Mr. & Mrs. David MacKenzie  
 Dale and Lorie Malody  
 Dr. Scott Manhart DDS  
 Mr. & Mrs. Peter Manigault

Maya & Edward Manley  
 Mr. & Mrs. Greayer Mansfield-  
 Jones, Jr.  
 Ms. Priscilla Marsh  
 Mr. Colin Marshall  
 Lawrence A. & Mary Ellen  
 Masters  
 Mr. & Mrs. Michael Masterson  
 David Matloff & Martha Matloff  
 Karry Kay Matson  
 Mr. George G. Matthews  
 Mr. & Mrs. John J. McAtee, Jr.  
 Ms. Anne S. McClure  
 Mrs. Eleanor S. McCollum  
 Gregory & Charlotte McCue  
 Mr. Charles W. McDaniel  
 Mary & Bruce McDonald  
 Mr. Willis McDonald IV  
 Mr. & Mrs. Alan S. McDowell  
 Mr. & Mrs. Glendon E. McFate  
 Mr. John McKee  
 Ms. Katharine L. McKenna  
 Mr. & Mrs. Clinton J. McKillop, Jr.  
 Mrs. Nancy N. McLamore  
 Mr. Eugene McLaurin  
 Mr. John McMullen  
 Medical Center Pharmacy  
 Ron & Tina Meeker – Meeker  
 Insurance Agency, Inc.  
 Mrs. Jane Cody Meincke  
 Mr. David B. Mellor  
 Mr. & Mrs. E. T. Meredith III  
 Mr. Richard Meserve  
 Mrs. Marjorie M. Messenger  
 Mr. William S. Midkiff  
 Mr. Elmer F. Mikkelson, Jr.  
 Mr. & Mrs. Leverett Miller  
 Mr. Terry L. Miller  
 Miller, Anderson & Sherrerd  
 Mr. Wilbur V. Mills  
 Mr. & Mrs. James B. Minter  
 Mr. Terry R. Mohny  
 Mr. & Mrs. Matthew C. Mole  
 Lee & Peg Molesworth  
 Mr. & Mrs. George J. Mongon  
 Mr. Thomas A. Monzo  
 Mrs. J. Maxwell Moran  
 Mr. & Mrs. James M. Moran, Jr.  
 Mr. Evy M. Morgan  
 Col. & Mrs. James L. Morrison, Jr.  
 Mr. Richard M. Morrow  
 Mr. & Mrs. William B. Morrow  
 Mr. Coleman Morton  
 Mr. & Mrs. M. Eugene Motsinger  
 Mr. Edmond Motta  
 Mr. Norman A. Mulvenon  
 Mr. James P. Munger  
 Ester Johansson Murray  
 Mr. Donald R. Nafus  
 Bob & Pat Nagel

National Cowgirl Museum & Hall  
 of Fame  
 National Rifle Association –  
 Craig Sandler  
 Nedra Matteucci  
 R. A. & Elsie M. Nelson  
 New West Furniture  
 Mr. & Mrs. Allan P. Newell  
 Mr. James E. Nielson  
 Mr. & Mrs. Mike L. Noe, Jr.  
 Mrs. Lisa Nohl  
 Norfolk Southern Foundation  
 Barry Norman  
 Mr. & Mrs. William D. North  
 Northeastern Wyoming Bank  
 Corp.  
 Mr. & Mrs. Dick Obermiller  
 Mrs. Henry Oliver, Jr.  
 Mr. Richard Oneslager, Sr.  
 Kathy C. Oppenhuizen  
 Dee S. & Patricia Osborne  
 Mr. & Mrs. Carl D. Ostling  
 Mr. & Mrs. Jim Oudin  
 John Q. Owsley, MD  
 Jane & Knox Pannill  
 Jerry & Deb Parkinson  
 Hunter Patrick  
 Rob Perkin  
 Mr. Alan Petersen  
 Peterson Quality Office Furniture  
 & Equipment  
 Petrie Family Foundation, Inc.  
 Mrs. Nicholas Petry  
 Mr. Gerard Pilley  
 Pinnacle Bank  
 Mr. William Q. Pirie  
 Ms. Lollie Benz Plank  
 Jack & Dee Potter  
 Mr. Joseph B. Prado  
 Mr. & Mrs. B. Byron Price  
 Prospect Creek Foundation, a  
 family foundation of Bruce &  
 Martha Atwater  
 Mr. & Mrs. Robert H. Quenon  
 Questar Corporation  
 Mr. & Mrs. Harold C. Ramser, Jr.  
 Mr. & Mrs. Byron L. Ramsing  
 Joy & Edward Randall  
 Ms. Linda Reynolds &  
 Mr. Elijah Cobb  
 Mr. Robert Rayzak  
 Mr. & Mrs. Bayard D. Rea  
 Mr. & Mrs. Richard E. Reece  
 Remington Arms Company, Inc.  
 Kenneth W. Rendell, Inc.  
 Mr. Norris N. Requist  
 Mr. Richard A. Reyes  
 Mr. & Mrs. Cecil S. Richardson  
 Ms. Mary Jane Rickman  
 Mr. & Mrs. Charles E. Riedy, Jr.



Mr. Leandro P. Rizzuto  
 Mrs. Hazel M. Robertson  
 Mr. Laurance S. Rockefeller  
 Mr. & Mrs. Robert F. Rockwell  
 Mr. Arnold H. Rohlfing  
 Mr. Howard J. Romanek  
 Mr. & Mrs. Robert Rosebraugh  
 Mr. & Mrs. Jack Rudin (in honor of Peter Kriendler)  
 Mr. Ronald Rumfield  
 Bronson C. Rumsey & Diana Rumsey  
 Mr. Albert C. Rusk  
 Mr. Nicholas G. Rutgers  
 Ray & Georgia Safford  
 Mr. & Mrs. Arne G. Sandberg  
 Dr. Robert M. Sandfort  
 Maggie & Dick Scarlett  
 Mr. & Mrs. Anton Scheiber  
 Mr. & Mrs. Otto C. Schnauber  
 Michael and Gina Schneider  
 Ms. Kornel Schoenstein  
 David Schwartz Foundation, Inc.  
 Brig. Gen. & Mrs. Robert R. Scott  
 Ms. Rose M. Sedlak  
 Mr. Henry E. Seibert  
 Mr. Stuart Seigel & Ms. Sherry D. Jackson (in honor of Al & Ann Simpson)  
 Mr. & Mrs. William Self  
 Mr. William B. "Bill" Sheets  
 Mrs. Celeste B. Shepard  
 Don & Mary Shockey  
 Mrs. Fritz Shurmur  
 Mr. Bernard Simon

Alan K. & Ann S. Simpson  
 Deborah & Steven Sklar  
 Ms. Barbara E. Smith  
 Mr. & Mrs. David L. Smith  
 Mr. Michael Smith  
 Mr. & Mrs. Robert G. Smith  
 Smith's Food & Drug Stores  
 Mr. & Mrs. Donald G. Spencer  
 Ed & Valerie Spencer  
 The Harriet and Edson Spencer Fund of the Minneapolis Foundation  
 Dick & Shirley Steck  
 Becky & Terry Stern  
 Mr. John M. Stewart  
 George B. Storer Foundation, Inc.  
 Mr. Peter Storer  
 Mr. Tony Storniola  
 Margo Wyeth Stratford  
 Stroupe Pest Control  
 Mr. & Mrs. Robert D. Stuart, Jr.,  
 Stuart Family Foundation  
 Mr. John C. Sullivan & Ms. Meredith Thompson  
 Mr. Larry Sullivan  
 Ambassador Mike & Jane Sullivan  
 Mr. Linden G. Swedeen  
 Lt. Col. Robert T. Sweeney  
 Mr. & Mrs. A. D. Swift  
 Midge & Tom Taecker  
 Mr. & Mrs. Cal S. Taggart  
 Mr. & Mrs. Christopher J. Taggart  
 Mr. & Mrs. James G. Taggart  
 Mrs. Phyllis J. Taggart  
 Mr. & Mrs. T. E. Taplin

Mr. Francis J. Tarpay  
 Mr. & Mrs. Harold R. Tate  
 Mr. & Mrs. Bruce B. Taylor  
 Mr. James B. Taylor  
 Mr. & Mrs. James H. Taylor  
 Mr. W.M. Teegarden  
 Dr. Jack Thielen  
 Mr. & Mrs. Larry Thomas  
 Ralph R. Thomas Foundation, Inc.  
 Mrs. Thyra G. Thomson  
 W. J. Thring & Mary Barbee  
 Margot Belden & Calvin Todd  
 Mr. William A. Torrey  
 Mr. & Mrs. Timothy J. Travis  
 Mr. J. Gary Trichter  
 The True Foundation  
 Mr. & Mrs. David L. True  
 Mr. & Mrs. Diemer D. True  
 Mr. & Mrs. H. A. True III  
 Mrs. Jean D. True  
 U.S. Bank  
 Mr. Edward E. Ulrich  
 Mr. & Mrs. Baylor Van Meter, Jr.  
 Mr. & Mrs. Harry E. Van Tuyl  
 Mr. & Mrs. Thurston VanHorn  
 Ms. Mary W. Vaughan  
 James & Kerry Vincent  
 Mr. John E. Vollmer, Jr.  
 Waddell Trading Company  
 Mr. Tom Wade, Jr.  
 Mr. & Mrs. H. William Walter  
 Mr. Steve Walters  
 Mr. George T. Warman, Jr.  
 Mr. & Mrs. Rawleigh Warner, Jr.

Mr. & Mrs. James A. Watson  
 Mr. & Mrs. C. E. Webster  
 Mr. Randall Weeks  
 Wege Foundation  
 Mr. & Mrs. David G. Weise  
 Chad & Wendy Weiss  
 Mr. & Mrs. William U. Weiss  
 Jerry & Sonja Wenger  
 Mr. Jim A. Wetzel  
 Jane & Otto Wetzel  
 Ms. Peggy Wetzel  
 D. Timothy White, PhD  
 Whitlock Motors  
 Mr. Roy Whitson  
 Mr. & Mrs. Warren T. Whittaker  
 Mr. & Mrs. K. F. Wiesemann  
 Mr. Joel M. Wilkinson  
 Mr. James H. Williams & Ms. Jacqueline A. Finch  
 Mr. William J. Williams  
 Mr. & Mrs. Richard Wilson  
 J. D. & L. M. Winzenried  
 Mr. & Mrs. John R. Woods  
 Mr. Waymon D. Wooten  
 Mr. Richard B. Worley & Ms. Leslie A. Miller  
 Keith & Charlotte Wright  
 Wrightson Ramsing Foundation, Inc.  
 Mr. James V. Wyman  
 Wyoming Weapons Collectors  
 Ms. Anne Young  
 YPI Foundation  
 Dr. Richard F. Zehner  
 Mrs. Barbara Ziegler



Entrance to Hidatsa Earth Lodge in the Plains Indian Museum. Chris Gimmeson photo.



**\$500,000 and above**

Ms. Nancy-Carroll Draper  
Mr. David M. Leuschen  
Mr. & Mrs. Louis F. Polk, Jr.  
Mrs. Marylou Whitney

**\$250,000 - \$500,000**

Fund H of Communities Foundation of Texas, Inc., recommended by Ray L. & Nancy Ann Hunt  
Mr. & Mrs. Edson W. Spencer  
Ms. Margo Grant Walsh  
Mr. & Mrs. William D. Weiss  
Mr. & Mrs. William U. Weiss

**\$100,000 - \$250,000**

Mr. Wiley T. Buchanan III  
Mr. & Mrs. Silas S. Cathcart  
The Getty Grant Program  
Mr. & Mrs. Walter F. Goodman, Jr.  
The Grainger Foundation, Inc.  
Mr. & Mrs. Richard E. Heckert  
The Henry Luce Foundation, Inc.  
Tim & Karen Hixon  
Institute of Museum & Library Services  
National Endowment for the Humanities  
Maurice Albert Postle Estate  
Mr. & Mrs. John M. Rhiner, JD  
Mr. & Mrs. Stanford C. Stoddard  
William H. Donner Foundation, Inc.

**\$50,000 - \$100,000**

Cody Country Chamber of Commerce  
GE Fund  
Cindy & Alan Horn  
Olin Corporation Charitable Trust  
Park County Travel Council  
Shell Oil Company Foundation  
Mr. & Mrs. Harold R. Tate  
USX Foundation, Inc.  
Ms. Mary W. Vaughan

**\$20,000 - \$50,000**

Anonymous  
Rogers and Mary Ellen Aston Charitable Remainder Unitrust  
Bingham Dana LLP/Bingham Legg Advisors (in memory of Kenneth W. Bergen)  
Mr. & Mrs. Jerry Blank  
Mr. & Mrs. D. Harold Byrd, Jr.  
The Anne and C.W. Duncan, Jr. Foundation  
Mr. & Mrs. Charles W. Duncan, Jr.

Mr. & Mrs. Lloyd I. Evans  
Mr. William C. Garlow  
Mr. & Mrs. Edmund W. Littlefield  
Mr. James E. Nielson  
Mr. & Mrs. Richard J. Schwartz  
Alan K. & Ann S. Simpson  
The Hon. & Mrs. Robert D. Stuart, Jr.

**\$10,000 - \$20,000**

1957 Charity Trust  
555 Manufacturing, Inc.  
Anonymous  
Beutel Family Fund of the Fidelity Investments Charitable Gift Fund  
City of Cody  
Mr. & Mrs. Barron G. Collier II  
Mr. & Mrs. Cortlandt S. Dietler  
Fayez Sarofim & Co.  
Mr. & Mrs. James Geler  
The Alice Busch Gronewaldt Foundation, Inc.  
Mr. & Mrs. Robert J. Keith, Jr.  
Mr. & Mrs. Charles G. Kepler  
The Robert S. & Grayce B. Kerr Foundation, Inc.  
Mr. & Mrs. George J. Mongon  
Mr. & Mrs. James Montgomery  
Mrs. J. Maxwell Moran  
Mary A. H. Rumsey Foundation  
Mr. & Mrs. Edward A. Schwartz  
Mr. John C. Sullivan & Ms. Meredith Thompson  
Mr. & Mrs. James G. Taggart  
The Tucker Foundation  
Wiancko Family Donor Advised Fund of the Community Foundation of Jackson Hole  
Mr. & Mrs. John R. Woods  
WOZ Group

**\$5,000 - \$10,000**

American Capital Access  
Ms. Sue Anschutz-Rodgers  
Mr. Gordon H. & Bobbi Barrows  
Bonnie Hershey & Frank Challant Fund of Combined Jewish Philanthropies  
Chevron USA Production Company  
R. G. Dell Fund  
Evans & Associates Enterprises, Inc. - Lloyd I. Evans  
The Fannie Cox Foundation  
Mr. & Mrs. Ernest J. Goppert, Jr.  
Ms. Marguerite D. Hark  
John & Kathryn Heminway  
The Roy A. Hunt Foundation  
Mr. & Mrs. James R. Jundt  
National Shooting Sports Foundation, Inc.

Mr. & Mrs. Ralph S. O'Connor  
Mrs. Nicholas Petry  
Shoshone First Bank  
George B. Storer Foundation, Inc.  
Sturm, Ruger & Co., Inc.  
Mr. & Mrs. H. A. Thompson  
The True Foundation  
Mr. & Mrs. David L. True  
Mr. & Mrs. Diemer D. True  
Mr. & Mrs. H. A. True III  
Mrs. Jean D. True  
Mr. Joel M. Wilkinson  
Wolfensohn Family Foundation  
YPI Foundation

**\$1,000 - \$5,000**

Allen & Company Incorporated  
Mr. & Mrs. Albert Andrews, Jr.  
Dr. & Mrs. Lenox D. Baker  
Basin Mechanical  
Mr. Robert A. Belfer & Mrs. Renee E. Belfer  
Mr. Martin Blackman  
Mr. Zach K. Brinkerhoff, Jr.  
Wiley T. Buchanan III Foundation  
The Bugas Fund  
The Hon. & Mrs. George H.W. Bush  
Mr. Jerry Clair  
Clarks Fork Foundation  
CMS Energy  
Ms. Suzanna W. Cody  
Mrs. Henry H.R. Coe  
Mr. & Mrs. Curtis Cushman  
Mr. & Mrs. Richard M. Davis, Jr.  
Mr. & Mrs. Robert Donner, Jr.  
Mr. & Mrs. J. W. Duncan, Jr.  
Mr. & Mrs. Thomas M. Evans, Jr.  
Mr. & Mrs. Carl F. Eveleigh  
Mr. & Mrs. Robert W. Ewing, Jr.  
Mr. Andrew L. Farkas & Mrs. Sandra M. Goff  
Mr. Andrew L. Farkas  
Fentress Bradburn Architects, Ltd.  
First National Bank & Trust  
First State Bank of Newcastle  
Ms. Mary Freund & Mr. Paul G. Matt  
Mr. & Mrs. Michael Frost  
The Goodman Family Foundation  
Mr. & Mrs. Patrick A. Grant  
Mr. & Mrs. Warren Greatbatch  
Mr. & Mrs. Steven Halmos  
Mrs. Augustin S. Hart, Jr.  
Mrs. Joy R. Hilliard  
Mr. Jerry W. Housel  
Judge & Mrs. John O. Housel  
Mr. & Mrs. Thomas Huge  
Mr. & Mrs. Dennis Hummel  
Mr. & Mrs. Joseph W. Jones



Just So Charitable Foundation  
 The Kaplan 1982 Revocable Trust  
 Mr. & Mrs. James M. Kaufman  
 Rev. & Mrs. Patterson Keller  
 Mr. Wayne Killmer  
 Mr. & Mrs. Mortimer N. Klaus  
 Mr. & Mrs. David Knight  
 Mr. Eugene M. Lang  
 Life Enrichment Foundation -  
     Foster & Lynn Friess  
 Dr. & Mrs. J. David Love  
 Mr. & Mrs. Peter Manigault  
 Mrs. Robert L. Manning  
 Mr. Willis McDonald IV  
 Mr. & Mrs. Alan S. McDowell  
 Mr. & Mrs. James B. Minter  
 Stuart & Phyllis Moldaw  
 Mr. & Mrs. Richard E. O'Leary  
 Mr. & Mrs. William M. Obering  
 Mrs. Henry Oliver, Jr.  
 Mr. Richard Oneslager, Sr.  
 Pacificorp Foundation  
 Pinnacle Bank  
 Mr. & Mrs. Richard A. Pohrt, Sr.  
 Mr. & Mrs. Leonard M. Polisar  
 Mr. & Mrs. Harold C. Ramser, Jr.  
 Mr. & Mrs. Byron L. Ramsing  
 Mrs. Hazel M. Robertson  
 Mr. Laurance S. Rockefeller  
 Elihu and Susan Rose  
 Mr. & Mrs. Jack Rudin  
 Mr. & Mrs. Bronson C. Rumsey  
 Mr. & Mrs. William Self  
 Mr. Ronald L. Simek  
 Erwin E. Smith Foundation  
 Mr. & Mrs. Gordon H. Smith  
 Mr. & Mrs. Stanley W. Snider  
 The Harriet and Edson Spencer Fund of the  
     Minneapolis Foundation  
 George B. Storer Foundation, Inc.  
 Mr. Peter Storer  
 Mrs. Margo W. Stratford  
 Mr. & Mrs. Robert D. Stuart, Jr.,  
     Stuart Family Foundation  
 Mr. & Mrs. Thomas E. Taplin  
 Mr. S. J. Tilden & Dr. Kyle D. Tilden  
 Mr. & Mrs. Donald Tober  
 Mr. & Mrs. Neal E. Tokowitz  
 Mr. & Mrs. C. E. Webster  
 Wege Foundation  
 Mrs. William E. Weiss  
 Mr. Wheelock Whitney  
 Dr. & Mrs. Noel D. Wilkie  
 Mr. William J. Williams  
 Mr. & Mrs. Kendall W. Wilson  
 Winchester Club of America

Mr. & Mrs. J. D. Winzenried  
 Mr. & Mrs. Richard B. Wodnik  
 Mr. & Mrs. Stephen Wolfson  
 Wrightson Ramsing Foundation, Inc.  
 Wyoming Arts Council  
 Wyoming Council For the Humanities  
 Y-Text Corporation

**\$500 - \$1,000**

Mr. & Mrs. Francis H. Abbott, Jr.  
 Albertson's, Inc.  
 Mr. Vernon Armour  
 Mr. & Mrs. Daniel C. Arnold (in honor of  
     Mr. & Mrs. Charles W. Duncan, Jr.)  
 Atherton & Murphy Investment Company  
 Mr. & Mrs. James E. Bama  
 Mr. & Mrs. David Bell  
 Mrs. Deborah Benfield  
 Mr. & Mrs. F. Q. Blair  
 Blair Hotels  
 Mr. Daniele D. Bodini  
 Ollie & Lee Boileau  
 Mrs. Marinell Boydston  
 Mr. & Mrs. Paul V. Cali  
 Mr. & Mrs. Win L. Carter  
 Ms. Myriam Castillo  
 Nick & Linda Cladis  
 Mr. & Mrs. Jonathan B. Clark  
 Ramon & Gwynne Clements  
 Mr. & Mrs. Henry H. R. Coe, Jr.  
 Dr. Michael D. Coe  
 Community First Bank  
 Steven & Dana Cranfill  
 The Cutshalls  
 T. P. "Ted" Dalzell  
 Ms. Adele B. Dilschneider  
 Mr. & Mrs. William Dingus  
 Gary & Carol Begeman  
 Jennifer & Zen Ervin  
 Mr. & Mrs. Charles Ewald  
 Mr. Mark P. Fisher  
 The Franklin Mint Foundation For the Arts  
 William H. & Mewes Goetzmann  
 Gundersheimer Family Fund (in honor of  
     Ann & Al Simpson)  
 Wilton & Camille Hammond  
 The Handler Foundation  
 Mr. Richard A. Heise, Sr.  
 Mr. & Mrs. John Heminway, Jr.  
 Mr. & Mrs. Carl Hess  
 Mr. Edward J. Husemann  
 Dr. Patricia L. Hutinger  
 Dr. & Mrs. James L. Johnson II  
 Mr. & Mrs. Edward C. Joullian  
 Ms. Laura Keith

Mr. & Mrs. Theodore E. Lauer  
 Mr. James R. Lawson  
 Mr. & Mrs. Harry A. Lehman  
 Martha & B. Richard Lennington  
 Mr. Bruce Leven  
 Dr. & Mrs. Charles Lipson  
 Mr. & Mrs. Francis Lombardi  
 Mr. & Mrs. John L. Love  
 Alan V. & Melanie M. Lovelace  
 Mr. & Mrs. Wilford C. Lyon, Jr.  
 Mr. David Mandelbaum  
 Mr. George G. Matthews  
 Mr. & Mrs. John J. McAtee, Jr.  
 Mr. & Mrs. Michael McCarty  
 Mrs. Eleanor S. McCollum  
 Ms. Katharine L. McKenna  
 Mr. John J. McMullen  
 Mr. & Mrs. E. T. Meredith III  
 Mr. & Mrs. Leverett Miller  
 Mr. Wilbur V. Mills  
 Dr. & Mrs. Douglas E. Morton  
 Mr. & Mrs. Theodore R. Murnick  
 New West Furniture  
 Mr. & Mrs. Allan P. Newell  
 Mr. & Mrs. Albert Nipon  
 Mr. & Mrs. Mike L. Noe, Jr.  
 Mr. & Mrs. D. Craig Nordlund (in memory  
     of Virginia Douglas)  
 Jane & Knox Pannill  
 Petrie Family Foundation, Inc.  
 Mr. Trevor H. S. Povah  
 Prospect Creek Foundation, a family  
     foundation of Bruce & Martha Atwater  
 Mr. & Mrs. Ken Puryear  
 Maggie & Dick Scarlett  
 Mr. & Mrs. Randy Seed  
 Mr. Stuart Seigel & Ms. Sherry D. Jackson  
     (in honor of Ann & Al Simpson)  
 Singer Photography  
 Ed & Valerie Spencer  
 Mr. & Mrs. Dick Stephenson  
 Mr. & Mrs. Simeon H. Stoddard  
 Ambassador Mike & Jane Sullivan  
 Mr. & Mrs. Christopher J. Taggart  
 Mr. & Mrs. Bruce B. Taylor  
 Mrs. Thyra G. Thomson  
 Margot Belden Todd & Calvin Todd  
 Mr. & Mrs. Jack Turnell  
 Mr. & Mrs. John E. Velde, Jr.  
 Mr. & Mrs. Rawleigh Warner, Jr.  
 Mr. & Mrs. Tommy Wayman  
 Wege Foundation  
 Dr. Barry P. Welch  
 Jerry & Sonja Wenger  
 D. Timothy White, Ph.D.  
 Mr. R. L. Wilson



Year after year, the BBHC is among the nation's leaders in offering a historical center proud of its excellence in historical accuracy, education, and research. You, our supporters, are key collaborators in these activities. Your generosity, your interest in our future, and your dedication inspire us and make our work possible. Support through our membership program in 2000 totaled more than \$500,000 through the generosity of more than 5,000 members. Unfortunately, space limitations prohibit us from listing all our members. The donations of other individual and family/household members are no less important than those listed here. Your willingness to collaborate and share through your gifts epitomizes the best of the human spirit. Together, we create a "Portal to the American West."

## PAHASKA LEAGUE

The Carl & Marilyn Malkmus Foundation, Inc.  
Mr. Victor Alexander, Jr.  
Mr. & Mrs. Jonathan Been  
Mr. & Mrs. Paul V. Cali  
Mr. & Mrs. Barron G. Collier II  
Dr. & Mrs. Charles Crowell III  
Mr. & Mrs. Michael Del Castello  
Mr. & Mrs. Cortlandt S. Dietler  
Mr. & Mrs. Wesley M. Dixon, Jr.  
Ms. Nancy-Carroll Draper  
Mr. & Mrs. Robin L. Farkas  
Mr. & Mrs. Crawford Gordon  
Mr. Robert L. Hayden & Mrs. Virginia Boal Hayden  
Mr. & Mrs. George C. Hixon  
Mr. Roger W. Hollander  
Mr. & Mrs. Alan F. Horn  
Mr. L. Patton Kline  
Mr. & Mrs. Peter Manigault  
Mr. Willis McDonald IV  
Mrs. J. Maxwell Moran  
Mr. James E. Nielson  
Mr. Richard Oneslager, Sr.  
Mr. & Mrs. Robert R. Onstead  
Mrs. Nancy D. Petry  
Mr. & Mrs. Louis F. Polk, Jr.  
Mrs. Hazel M. Robertson  
Mr. William B. Ruger, Sr.  
Mr. & Mrs. Robert Ryan  
Mr. Ronald L. Simek  
Mr. & Mrs. Leighton Steward  
Ms. Evelyn Twigg-Smith  
Mr. & Mrs. John E. Velde, Jr.  
Mrs. William E. Weiss  
Mr. & Mrs. William D. Weiss  
Mr. & Mrs. Carl M. Williams

## BENEFACTOR

Pahaska Tepee  
Ms. Sue Anschutz-Rodgers  
Mr. & Mrs. Gordon H. Barrows  
Mrs. Jack H. Berryman  
Mr. & Mrs. T. P. Dalzell

Dr. & Mrs. James H. Duke, Jr.  
Mr. & Mrs. Raymond T. Duncan  
Mr. & Mrs. Thomas M. Evans, Jr.  
Mr. & Mrs. Carl F. Eveleigh  
Mr. & Mrs. Jack Fritz  
Mr. & Mrs. Richard E. Heckert  
Mrs. Lucy Rosenberry Jones  
Mr. & Mrs. Robert J. Keith, Jr.  
Mr. & Mrs. William J. Kelly  
Mr. & Mrs. William G. Kerr  
Ms. Christy Lee & Mr. William Pope  
Mr. & Mrs. Alan Lovelace  
Mr. & Mrs. Ignacio E. Lozano  
Mr. & Mrs. Greg Luce  
Mr. & Mrs. E. T. Meredith III  
Mr. William Merritts  
Dr. & Mrs. Van Kirke Nelson  
Mr. & Mrs. Thomas H. O'Leary  
Mrs. Robert H. Phinny  
Mr. Trevor H. S. Povah  
Mr. & Mrs. William H. Price II  
Mr. & Mrs. Byron L. Ramsing  
Mr. & Mrs. Victor Riley  
Mr. & Mrs. Joseph S. Sample  
Mr. & Mrs. W. R. Scarlett III  
Mr. & Mrs. Herbert Schinderman  
Mr. & Mrs. Richard J. Schwartz  
Mr. & Mrs. Donald M. Smith  
Mr. & Mrs. Edson W. Spencer  
Mr. & Mrs. B. Albert Stern, Jr.  
Mr. & Mrs. Robert L. Stone  
Mr. & Mrs. Peter Storer  
The Hon. & Mrs. Robert D. Stuart, Jr.  
Mr. & Mrs. Martin Turchin  
Mr. & Mrs. Jack Turnell  
Mr. & Mrs. C. E. Webster  
Mr. Ralph H. Williams  
Ms. Anne Young

## SUSTAINER

Mr. & Mrs. Francis H. Abbott, Jr.  
Mr. & Mrs. Lowell E. Baier

Mr. & Mrs. Robert C. Barker  
Mr. & Mrs. Anson M. Beard, Jr.  
Mr. Daniele D. Bodini  
Mrs. Marinell Boydston  
Mrs. Helen Cashman  
Dr. Michael D. Coe  
Mr. & Mrs. Miles Collier  
Mrs. George Crockett  
Mr. & Mrs. R. S. Cutshall  
Mr. & Mrs. William Dingus  
Mr. & Mrs. Robert Donner, Jr.  
Rev. Daphne B. Grimes  
Hon. & Mrs. Clifford P. Hansen  
Mr. Richard Heise, Sr.  
Mr. & Mrs. Doug Johnson  
Mr. George F. Johnson  
Rev. & Mrs. Patterson Keller  
Mr. & Mrs. W. H. Koerner III  
Mr. & Mrs. Orville C. Miller, Jr.  
Mr. Wilbur V. Mills  
Mr. & Mrs. James B. Minter  
Mr. & Mrs. Allan P. Newell  
Ms. Joanne Nielson  
Mr. & Mrs. George R. O'Connor  
Mr. & Mrs. William M. Obering  
Mr. & Mrs. Brian D. Pfeifler  
Mr. Ruffin Prevost  
Mr. & Mrs. Stewart Resnick  
Mr. James S. Rhodebeck  
Mr. William B. Ruger, Jr.  
Mr. & Mrs. Richard C. Schafer  
Dr. Frank H. Schmidt, M.D. & Dr. Catherine Schmidt  
Mr. & Mrs. Edward A. Schwartz  
Mr. & Mrs. Randy Seed  
Mr. & Mrs. Richard D. Siragusa  
Mr. & Mrs. Dick Stephenson  
Mrs. Phillip R. Stull  
Mr. & Mrs. Bruce B. Taylor  
Mr. W.M. Teegarden  
Mr. & Mrs. William J. Thomson II  
Mr. S. J. Tilden & Dr. Kyle D. Tilden  
Mr. & Mrs. Calvin Todd

Mr. & Mrs. H. A. True III  
Mrs. Jean D. True  
Mr. & Mrs. William B. Vollbracht  
Mr. William J. Williams  
Mr. & Mrs. John B. Winsor  
Mr. & Mrs. Pierre Yperman

## SPONSOR

Skinner Auctioneers  
Mr. Eugene B. Adkins  
Dr. & Mrs. John L. Allen  
Ms. Virginia L. Allen  
Mrs. Louise S. Ansberry  
Ms. Dianna Archuleta  
Mr. Daniel C. Arnold  
Mr. Harold G. Arnold & Mr. Thomas J. Arnold  
Mr. Lloyd A. Bailey  
Mr. & Mrs. H. R. Barr  
Mr. Arthur C. Bedner  
Mr. & Mrs. George Bermant  
Mr. Joe W. Bishop  
Mr. Vernon L. Blair  
Mr. & Mrs. Jerry Blank  
Mr. & Mrs. Oliver C. Boileau, Jr.  
Mr. & Mrs. Len Braarud  
Mr. & Mrs. George Brown  
Mr. & Mrs. Charles P. Brumder  
Mr. Warren F. Buxton  
Mr. & Mrs. Howard B. Camden  
Dr. & Mrs. Leonard Carpi  
Mr. & Mrs. Win L. Carter  
Mr. W. J. Chamblin  
Dr. & Mrs. L. Charles Christensen, M.D.  
Mr. Thomas G. Clarke  
Mr. & Mrs. Ramon G. Clements  
Mr. & Mrs. Hiram S. Cody, Jr.  
Mr. Frank E. Colburn  
Mr. & Mrs. Warren T. Cowgill  
Mr. & Mrs. Steven R. Cranfill  
Mr. & Mrs. Curtis Cushman  
Mr. & Mrs. Richard M. Davis, Jr.  
Mr. Douglas L. Dennis



Mrs. Carol T. des Cognets &  
Mr. Archer B. des Cognets  
Mr. Marvin Deutch  
Mr. Donald D. Dodge, Jr.  
Mr. & Mrs. Edmund A.  
Donnan, Jr.  
Mr. & Mrs. James P. Dorr  
Mr. & Mrs. John T.  
Dorrance III  
Mr. & Mrs. Charles Ewald  
Mr. & Mrs. Junior L. Fendt  
Dr. & Mrs. Rand Flory  
Mr. & Mrs. Alan F. Fox  
Russ and Donna Frederick  
Foster & Lynn Friess  
Mr. & Mrs. Michael Frost  
Mr. & Mrs. William B. Gannett  
Mr. & Mrs. James Geier  
Dr. & Mrs. David R. Gelbart  
Mr. & Mrs. Walter F.  
Goodman, Jr.  
Mr. & Mrs. Frank H.  
Goodyear, Sr.  
Mr. & Mrs. Ernest J.  
Goppert, Jr.  
Mr. & Mrs. Robert E. Gradle  
Mr. & Mrs. J. Leonard Graham  
Mr. & Mrs. Richard W.  
Graham  
Mr. L. W. Hamilton III  
Mr. & Mrs. Robert H. Hanson  
Mrs. Virginia Harris  
Ms. Patricia P. Hayes-Stanley  
Mr. & Mrs. Loren W. Hershey  
Ms. Letitia M. Hickox  
Mr. & Mrs. Howell H. Howard  
Ms. Linn H. Howard  
David and Cynthia Hummel  
Mr. & Mrs. Ed Hunter  
Mr. Jerome F. Jacobs  
Mr. & Mrs. Jerome J. Jacobson  
Mr. Bill Jeanes, Jr.  
Mr. & Mrs. Joseph W. Jones  
Mr. & Mrs. H. W. Julien  
Mr. & Mrs. Leo J. Kenney  
Mr. & Mrs. Charles G. Kepler  
Mr. & Mrs. Donald L. King  
Mr. & Mrs. Daniel Klaes  
Mrs. Florence C. Lamb  
Mr. Richard Lampert & Mr.  
Mark Zaplin  
Mr. & Mrs. Robert Legnini  
Ron and Jane Lerner  
Mr. & Mrs. Alan E. Leske  
Ms. Julia Smith Lewis  
Mr. & Mrs. Clark Linders  
Mr. Michael D. Loprete  
Ms. Christy Love  
Mr. Jacob Lowrey  
Mr. & Mrs. Wilford C. Lyon, Jr.  
Dr. & Mrs. Stephen E. Mainini  
Mr. & Mrs. Harold Mankin II  
Mr. Eric Markovic

Mr. & Mrs. Thomas R.  
Masterson  
The Hon. Marquita M. Maytag  
Mr. & Mrs. Walter McCauley  
Mr. Gordon Cleaves  
McDannald  
Mrs. Mary Lou H. McDonald  
Mr. & Mrs. Louis McNair  
Mr. David B. Mellor  
Mr. Alan B. Minier & Ms.  
Mary F. Moore  
Mr. & Mrs. Robert L. Mitchell  
Mr. Carey Mock  
Mr. Terry R. Mohny  
Mr. & Mrs. G.F. Mortimer  
Mr. & Mrs. Jeff Mummery  
Mr. William E. Mussett, Jr.  
Ms. Mary Ann Myers  
Mr. & Mrs. Lee K. Nelson  
Dr. & Mrs. Scott Nickerson  
Mr. Vernon O. Olson  
Mr. & Mrs. Jon Oscher  
Mr. & Mrs. J. Knox Pannill, Jr.  
Mr. Julian Peraza  
Mr. & Mrs. Gene R. Peterson  
Rick and Ann Pole  
Mr. & Mrs. Trevor S. Povah  
Mr. Paul R. Provost  
Mr. & Mrs. Russell S.  
Reynolds, Jr.  
Ms. Marion S. Robinson  
Mr. Jack Sadler  
Ms. Jane Schiff & Mr. Sid  
Moosnick  
Mrs. Rosemary T. Schreiber  
Mr. & Mrs. William Self  
Mr. Jack Shaoul  
Ms. Barbara E. Smith  
Mr. Elbert O. Sowerwine III  
Mr. Bradley D. Spitz  
Mr. & Mrs. Dick W. Steck  
Mr. James M. Stevens  
Mr. & Mrs. Robert W. Stevens  
Mr. & Mrs. John Stewart  
Mrs. Margo W. Stratford  
Ms. Nancy M. Straub  
Mr. Jim Studer  
Amb. & Mrs. Michael J.  
Sullivan  
Mr. & Mrs. William H. Swann  
Mr. & Mrs. Walter J. Taylor  
Mr. Ralph B. Thomas  
Mrs. Thyra G. Thomson  
Mr. Harry Tobias  
Mr. William A. Torrey  
Mr. & Mrs. Timothy J. Travis  
Mr. & Mrs. H. Edwin Trusheim  
Mr. & Mrs. John S. Vietti  
Ms. Jessica C. Wagner  
Mr. & Mrs. William H. Waller  
Mr. & Mrs. David G. Weise  
Mr. & Mrs. Charles S. Weiss  
Dr. Barry P. Welch

Mr. Robert W. Welsh  
Mr. & Mrs. Jerry Wenger  
James A. West., Jr.  
Mr. Tim White  
Mr. & Mrs. W. L. Whiting  
Mr. Pierre H. Willette  
Mr. & Mrs. James A. Williams  
Mr. Max Williams  
Mr. James W. Wilson  
Mr. Bert F. Winston, Jr.  
Mr. & Mrs. Ben G. Wright  
Mr. & Mrs. David A. Wulfing  
Mr. & Mrs. B. E. Yester  
Mr. & Mrs. Graydon E. Yester  
Mr. Richard L. Zeilman  
Mr. & Mrs. Gail Zimmerman,  
Ph.D.

#### CENTENNIAL

Lane Ranch Company  
Inberg-Miller Engineers  
Mary Williams Fine Art  
Diamond Eighty-Eight Ranch  
State Farm Agency  
Church of St. Anthony  
St. Barbara's Catholic Church  
West Office Exhibition Design  
The Wellness Center  
Fighting Bear Antiques  
GBS LLC  
The Iron Kettle Yarn  
Emporium  
B-Dazzled  
Louis D. & Barbara K. Adams  
Mr. & Mrs. Stu Alan  
Mr. & Mrs. Howard Alexander  
Mrs. Carol Andrews  
Dr. & Mrs. Edward H.  
Arnold, Jr.  
Mr. James M. Asprocolas  
Ms. Tehra L. Atwater  
Mrs. Donna K. Badon  
Mr. & Mrs. Alan J. Baer  
Mr. & Mrs. Manly Baker  
Dr. & Mrs. Jeffrey R. Balison  
Mr. & Mrs. Robert C. Balsam  
Mr. & Mrs. James E. Bama  
Mr. Rotchford L. Barker  
Ms. Vicki S. Bass  
Mr. Francis H. Beam, Jr.  
Mr. James L. Bellis  
Mr. Richard L. Bennett & Ms.  
Ruth Horton  
Mrs. Henry O. Benning  
Mr. Clarence Benson  
Mr. & Mrs. Edward L. Benson  
Mr. Ronald H. Benson  
Mr. & Mrs. John Bergsma  
Mr. & Mrs. Charles S. Berney  
Mr. & Mrs. Francis M. Betts III  
Mr. & Mrs. Frederick Bevis  
Mr. Steven Biegel

Mr. Jack L. Billhardt  
Ms. Catharine Bieser Black  
Mr. & Mrs. Lynn Blair  
Mr. & Mrs. August Bodhaine  
Ms. Linda G. Boyd  
Ms. Lila W. Boyer  
Mr. Walter G. Braunschweig III  
Mr. & Mrs. Donald S.  
Brinkman  
Mr. & Mrs. Arnold A. Brown  
Mr. & Mrs. I. William  
Brownlee  
Mrs. Esther C. Brumage  
Mr. & Mrs. Richard F. Bucher  
Mr. John H. Buck  
Ms. Moya Bullis  
Mr. & Mrs. Christian Bunning  
Ms. Jennifer Burnham  
Mr. & Mrs. John R. Caldera  
John and Ann Caldwell  
Mr. & Mrs. David P. Carlin  
Mrs. Barbara Carlsberg  
Mr. & Mrs. Chris Catsmanes  
Ms. Marianne Champlin  
Mr. & Mrs. Harman Chandler  
Mr. & Mrs. Glen Charles  
Mr. & Mrs. Ken L. Chase  
Mr. & Mrs. J. E. Chenoweth  
Mr. & Mrs. Bob G. Cherry  
Mrs. Judy C. Childs  
Mr. & Mrs. Steven A.  
Christiansen  
Mr. & Mrs. Nick R. Cladis  
Mr. B. D. Claycomb  
Mr. Kevin Clutter  
Ms. Bonnie L. Clyde  
Mr. A. V. Robertson Coe  
Mr. George V. Coe  
Mrs. Henry H.R. Coe  
Mr. & Mrs. Henry H. Coe, Jr.  
Dr. & Mrs. Norman A. Cohen  
Mr. & Mrs. Peter Cole  
Dr. Ross J. Collie, M.D.  
Mr. Rupert Colmore  
Dr. & Mrs. Lawrence A. Cone  
Ms. Agnes A. Conley  
Dr. & Mrs. J. Robert Connell  
Mr. John P. Cooney, Jr.  
Mr. Drury W. Cooper III  
Mr. & Mrs. Reid Cooper  
Mr. & Mrs. Charles E. Cord, Jr.  
Mr. & Mrs. Lawrence L.  
Crane, Jr.  
Dr. & Mrs. Fritz Cubin  
Mr. Arnold D. Cunningham  
Mr. & Mrs. Jerome J. D'Arcy  
Mr. & Mrs. James R. Daly  
Mr. Gerry Danko  
Mr. & Mrs. Robert D.  
Davidson  
Mr. Howard H. Davis  
Mr. & Mrs. William Davis  
Mr. & Mrs. Oliver M. Dawson



Mr. & Mrs. Peter R. Decker  
Dr. E. G. DeForrest  
Mr. Victor Della  
John Delo & Donna Schuette  
Mrs. Josephine DeWitt  
Mr. & Mrs. Robert Dickey III  
Mr. Alan Dimmers  
Mr. John DiSanti  
Mr. Jeff Dolan  
Mr. & Mrs. Dan M. Domont  
Mr. & Mrs. Lewis H. Dowdy V  
Mr. Richard K. Dowse  
Mr. Bob Drummond  
Mr. & Mrs. Charles E.  
Du Pont, Jr.  
Ms. Donna Dubrow  
Mr. Barry Duck  
Mrs. Caroline W. Duell  
Mr. & Mrs. Stephen P.  
Duermeyer  
Mrs. Gloria S. Duffy  
Mrs. Mary Duggeby  
Mr. & Mrs. Thomas C. Ehlers  
Mr. & Mrs. Kenneth Elison  
Mr. & Mrs. LaMar T. Empey  
Ms. Sunderland W. Everstill  
Mr. & Mrs. Keith Fahrenholz  
Mr. & Mrs. James Farrell  
Mr. John F. Farrell, Jr.  
Mr. & Mrs. Eugene G. Fast  
Mr. & Mrs. John Feeley  
Mr. & Mrs. William Fetterhoff  
Mr. Fred S. Fiedler  
Mr. Lawrence Field  
Mr. & Mrs. David L. Filkin  
Ms. Eleanor E. Finley  
Mr. & Mrs. A. Brooks  
Firestone  
Tom and Doneen Fitzsimmons  
Ms. Brenda R. Flam  
Mr. Norman Flayderman  
Mr. & Mrs. Stan Flitner  
Mr. & Mrs. David Foss  
Mr. & Mrs. Dudley Frank  
Mr. & Mrs. Charles L. Frankel  
Mr. & Mrs. Gene Franzen  
Mr. Bill Frazier  
Mr. Robert Friend  
Mr. & Mrs. Donald R. Frisby  
Mr. Robert W. Frisby  
Mr. Lynn C. Fritz  
Mr. & Mrs. Don Fry  
Mr. Michael C. Gahagan  
Mr. & Mrs. Alex Galbraith  
Mr. Laurence H. Gardner II  
Mr. Allan Garfinkle  
Mr. & Mrs. Robert F. Garland  
Mr. & Mrs. Charles C. Gates  
Mr. Milo S. Gates  
Mr. Herbert L. Gaynor  
Mr. Paul E. Gehlhausen  
Mr. & Mrs. Daniel F. Gerber  
Mr. & Mrs. Thomas E. Glass

Mr. & Mrs. William S. Godfrey  
Mr. & Mrs. Robert O. Goerlich  
Dr. Walter H. Gould  
Mr. David B. Gravelle, Jr.  
Mr. & Mrs. Larry Grissom  
Mr. & Mrs. Gary K. Gunstrom  
Mr. James M. Hagen  
Mr. Gerald Hammett  
Ms. Anne Hammond  
Mr. & Mrs. Wilton N.  
Hammond  
Ms. Beverly G. Hansberger  
Mr. & Mrs. Clifford L. Hansen  
Mr. & Mrs. Steve Hansen  
Mr. Louis W. Harper & Ms.  
Paula M. Willoughby  
Mr. Frederick Harris  
Mr. & Mrs. John R. Hart, Jr.  
Mr. & Mrs. W. G. Hart  
Harris Haston & Carlene  
Lebous  
Mr. & Mrs. Gilbert R. Hatcher  
Mr. & Mrs. James F. Hayes  
Mr. & Mrs. William J. Hayes  
Mr. & Mrs. William P. Healey  
Mrs. Martha Healy  
Mr. & Mrs. Michael W. Healy  
Mrs. Kay Hearn  
Mr. & Mrs. Gail R. Hendricks  
Ms. Mary H. Hendry  
Mr. & Mrs. Scott Heppel  
Mr. & Mrs. David Herrick  
Mr. & Mrs. Rick Heyes  
Mr. & Mrs. John M. Heyneman  
Mr. John Barker Hickox  
Mr. Jonel Hill  
Mr. & Mrs. Joseph Hill  
Mr. & Mrs. Gary Hoar  
Mr. Harold R. Hoffman  
Mr. Virgil L. Holden  
Mr. & Mrs. R. E. Holding  
Mr. & Mrs. Jack K. Holland  
Mr. & Mrs. Penn H. Holsapple  
Mr. & Mrs. Edward P. Honnen  
Lynn S. Horton, M.D.  
Mr. Howell Howard III & Ms.  
Mary Mendenhall  
Mr. Peter C. Howe & Ms.  
Elizabeth V. Brown  
Mr. & Mrs. Robert L. Hunsicker  
Mr. & Mrs. Walter A. Hunt, Jr.  
Mr. & Mrs. Wilson Hurley  
Mr. Edward J. Husemann  
Dr. & Mrs. Edward K. Isbey, Jr.  
Mr. Charles B. Israel  
Mr. & Mrs. Roger L. Jacobson  
Mr. & Mrs. John G. Jenkins  
Mrs. William R. Jensen  
Mr. Scott Johnson  
Mr. & Mrs. Edward W. Johnson  
Mr. Stephen T. Johnston  
Mr. John W. Johnstone, Jr.  
Mr. & Mrs. E. B. Jones

Mr. Robert F. Jones  
Mr. & Mrs. Springer Jones  
Ms. Kathleen Jorgensen  
Mr. & Mrs. Charles A. Juden, Jr.  
Ms. Debra J. Julien  
Mr. & Mrs. Robert C. Kahn  
Mr. Ed Kaltreider  
Ms. Temia Keel  
Mrs. Erma G. Keeley & Mrs.  
Lynn A. Mitchell  
Mr. Edward J. Keller  
Mr. & Mrs. Stewart R. Kester  
Mr. Art Kidwell  
Mr. Robert H. Kieckhefer  
Mr. & Mrs. Hugo K. Kilian  
Mr. & Mrs. James D. King  
Mr. & Mrs. Sheldon S. King  
Mr. & Mrs. William L. King  
Mr. & Mrs. Jerry Kinkade  
Mr. John Klonizos  
Mr. & Mrs. David Knight  
Carl and Emily Knobloch  
Ms. Helen Koch  
Dr. & Mrs. Frank Kopecky  
Mr. James Kouf, Jr.  
Mr. & Mrs. Arthur Kreizel  
Dr. & Mrs. William G. Laatsch  
Mr. Karl Lampe  
Mr. & Mrs. Robert E. Lansing  
Dr. & Mrs. William A. Larson  
Mr. & Mrs. Robert W. Lateer  
Mr. James R. Lawson  
Mr. & Mrs. Cecil A. Legg  
Mr. & Mrs. Harry A. Lehman  
Ms. Paula V. Leuschen  
Dr. & Mrs. Edward  
Linebaugh DDS  
Mr. & Mrs. H. A. Linton  
Mr. & Mrs. James A. Linton  
Mr. & Mrs. William P. Long  
Mr. John C. Lorini  
Mr. & Mrs. J. T. Lovell  
Mr. Neil Lynch  
Mr. T. C. Lyster  
Mr. Wilson K. Lythgoe  
Mr. Otto E. Madsen &  
Mrs. Joan D. Madsen  
Mrs. Jean B. Mahoney  
Mr. & Mrs. Jim Maitland  
Mr. & Mrs. Everett March  
Dr. Benjamin T. Marchello, M.D.  
Mr. & Ms. Ed Martin  
Mrs. Mary M. Martin  
Ned and Jody Martin  
Mr. & Mrs. Robert H. Martin  
Mrs. Robert W. Martin, Jr.  
Mr. & Mrs. Frederick R. Mayer  
Mr. & Mrs. John J. McAtee, Jr.  
Mr. William B. McCall  
Mr. & Mrs. Michael McCarty  
Mrs. Eleanor Searle Whitney  
McCollum  
Mr. & Mrs. Glyn McCord

Dr. & Mrs. Gregory P. McCue  
Ms. Catherine McDonough &  
Dr. Thomas J. Lambert  
Mr. & Mrs. Wilson McElhinny  
Mr. & Mrs. Glendon E. McFate  
Mr. Allison McIver  
Tom and Mary McKean  
Mr. Greg McPherson  
Mr. & Mrs. Charles H. McTier  
Ms. Lisa Melone  
Valorie Wolcott-Mendelson  
Mrs. Marjorie M. Messenger  
Dr. & Ms. Lloyd L. Miller  
Mr. Wayne Miller  
Mr. Vern Milligan  
Mr. & Mrs. Lee J. Molesworth  
Mr. Delbert G. Moore  
Mr. J. M. Morrison  
Mr. & Mrs. John B. Mortensen  
Mr. Veryl Moser  
Mr. & Mrs. C. R. Motis  
Mr. & Mrs. M. Eugene  
Motsinger  
Mr. & Mrs. Eric S. Muller  
Mr. & Mrs. Theodore R.  
Murnick  
Mr. & Mrs. John A. Murray  
Mr. & Mrs. George Narcavage  
Mr. & Mrs. James E. Nelson  
Mr. & Mrs. Ken M. Nelson  
Ms. Paula M. Nelson &  
Mr. Stephen C. Krumpel  
Mr. Roland Nickerson  
Mr. John T. Nickle  
Mr. Alex W. Nielsen  
Mr. James A. Noe  
Mr. & Mrs. Mike L. Noe, Jr.  
Mr. & Mrs. Werner F. Noesner  
Mrs. Adair M. Nunnally  
Mr. Irwin Nussbaum  
Mr. & Mrs. Jerry W. O'Connell  
Mr. & Mrs. Robert H. Oakland  
Mr. Eric Olds  
Mr. & Mrs. Henry Oliver III  
Mr. & Mrs. Robert D. Olson  
Mr. Denny W. Orr  
Mr. Carrol Orrison  
Mr. David Orser & Ms. Ossie  
Abrams  
Ms. L. E. Orser  
Mr. & Mrs. Michael Overeem  
Mr. & Mrs. William J. Owens  
Miss Clotilde Oxford & Mr.  
Royal Oxford  
Ms. Joan R. Palmer  
Mr. William R. Palmer  
Mr. & Mrs. Geoff Parker  
Mr. & Mrs. Jonathan E. Parker  
Mrs. Sebert L. Pate  
Judge & Mrs. Hunter Patrick  
Mr. Harry L. Paulsen  
Mr. & Mrs. Tony Pejsa  
Mr. & Mrs. Harold F. Perry



Mr. & Mrs. Charles Peterson  
 Mr. & Mrs. Thomas Petrie  
 Ms. Laura A. Petticord  
 Dr. & Mrs. Tom Pettinger  
 Mr. & Mrs. Allan O. Pfnister  
 Mr. Gerard Pilley  
 Ms. Lelani S. Pillsbury  
 Mrs. Deirdre H. Pirie  
 Mr. & Mrs. Patrick G. Pitet  
 Ms. Lollie Benz Plank  
 Mr. & Mrs. Richard A. Pohrt, Sr.  
 Mrs. Dorothy M. Price  
 Ms. Helene M. Pursley  
 Mr. & Mrs. Ken Puryear  
 Mr. Joseph P. Quinlan  
 Mr. & Mrs. Edward Randall IV  
 Ms. Eliza L. Randall  
 Mr. Fred M. Raumer &  
 Ms. Glenda K. Winkelmann  
 Mr. Bill Ray  
 Mr. & Mrs. David R. Reynolds  
 Mr. & Mrs. Bayard D. Rea  
 Mr. Kevin Red Star  
 Mr. Robert N. Reed  
 Mr. & Mrs. Thomas E. Reilly, Jr.  
 Mr. & Mrs. Peter A. Reimers  
 Mr. Brad Reynolds &  
 Ms. Sherry Hostetter  
 Mr. & Mrs. David Richardson  
 Mr. Gaylord E. Riley  
 Mr. & Mrs. George Risberg  
 Mr. & Mrs. Daniel G. Roblyer  
 Mr. Jake Rothney  
 Mr. & Mrs. Bronson C. Rumsey  
 Tamara, Benjamin &  
 S. Todd Rush, Jr.  
 Mr. J. R. Russell  
 Mr. Tom Ryan  
 Mr. & Mrs. Ray W. Safford  
 Mr. & Mrs. Charles L. Salzberg  
 Mr. & Mrs. D. Paul Sampson  
 Mr. Craig Sandler  
 Mr. & Mrs. Anton Scheiber  
 Mr. Claude Schlesinger  
 Mr. William Schlichter  
 Mr. & Mrs. David A. Schlothauer  
 Mr. & Mrs. Carl J.  
 Schmidlapp III  
 Mr. & Ms. James P. Schmitt  
 Mr. & Ms. Al Schultz  
 Mr. & Mrs. Glen Schultz  
 Brig. Gen. & Mrs. Robert R.  
 Scott  
 Mr. & Mrs. George J. Sekan  
 Mr. Edwin B. Self  
 Mr. & Mrs. Edward J. Seymour, Jr.  
 Ms. Jane Shapiro  
 Mr. Gary Sharp  
 Mr. & Mrs. John V. Shaw  
 Mr. & Mrs. Maurice P. Shea  
 Mr. & Mrs. John A. Shelton, Jr.  
 Mr. Larry Shepard  
 Mr. & Mrs. V. J. Sheppard

Mr. & Mrs. William N. Shiebler  
 Mr. & Mrs. J. Donald Shockey  
 Ms. Cindy A. Shoecraft  
 Ms. Peg A. Shreve  
 Ms. Carey Shuart  
 Mr. & Mrs. Kendall C. Siggins  
 Mr. & Mrs. Alan Silverbach  
 Mr. & Mrs. Gary Sisson  
 Mr. & Mrs. David L. Smith  
 Dr. & Mrs. James T. Smith  
 Mr. & Mrs. Leon W. Smith  
 Mr. & Mrs. Robert J. Smith  
 Mrs. Donald Snyder  
 Mr. & Mrs. Robert L. Snyder  
 Mr. & Mrs. David Solberg  
 Mr. & Mrs. James R. Sommers  
 Mr. Ralph Sorensen  
 Mr. & Mrs. Tony Sorenson  
 Mr. Ira Spanierman  
 Mr. & Mrs. James K. Speer  
 Mr. & Mrs. Donald G. Spencer  
 Mr. Thomas E. Spicer  
 Ms. Sue Sporer & Mr. Ryan  
 Torkelson  
 Mr. & Mrs. Robert M. Stayner  
 Mrs. C. R. Stein  
 Mr. & Mrs. Joseph Steinmetz  
 Mrs. Sheila Stiteler  
 Mr. & Mrs. F.D. Mike Stone  
 Mr. Donald A. Stout  
 Mr. & Mrs. Jack D. Strain  
 Dr. & Mrs. John A. Stroube  
 Mr. & Mrs. Thomas H. Suitt, Jr.  
 Dr. & Mrs. Patrick G. Sullivan  
 Mr. & Mrs. Gale Sunderland  
 Mr. Gary R. Swanson  
 Mr. & Mrs. Alan B. Swenson  
 Dr. Bernard Swope  
 Mrs. Phyllis J. Taggart  
 Mr. & Mrs. Cuyler M. Taylor  
 Dr. & Mrs. David Taylor  
 Mr. & Mrs. Robert F. Taylor  
 Dr. Jack Thielen  
 Mr. & Mrs. Charles Thompson  
 Mr. Thomas A. Till  
 Ms. Jeannette W. Tilley  
 Mr. & Mrs. Neal E. Tokowitz  
 Mr. & Mrs. Tom E. Turner, Jr.  
 Mr. R. E. Turnquist  
 Mr. & Mrs. Jerome H. Vallens  
 Mr. & Mrs. Don Van Ort  
 Ms. Jackie Van Vliet  
 Mr. John A. Vann  
 Ms. Mary W. Vaughan  
 Mr. Robert G. Verbica  
 Mr. & Mrs. Thomas E. Vinson  
 Mr. John E. Vollmer, Jr.  
 Mr. Robert Voneschen  
 Mr. Gene Waddell  
 Dr. & Mrs. John C. Wade  
 Mr. & Mrs. Robert M. Wagner  
 Mr. Paul Warden  
 Mr. Craig S. Wardle

Mr. & Mrs. Greg Watson  
 Mr. & Mrs. James A. Watson  
 Mr. & Mrs. John T. Watson  
 Mr. & Mrs. Harmon H. Watt  
 Ms. Linda Webster  
 Mr. & Mrs. William U. Weiss  
 Mr. Stuart M. Weller  
 Mr. & Mrs. Fred W. Wenzel  
 Dr. & Mrs. Frank D. Werner  
 Mrs. Geraldine M. Werner  
 Mr. C. Keith West  
 Mr. Richard White  
 Mr. & Mrs. George Whitlock  
 Mr. & Mrs. Steven Whitmore  
 Mr. Russell Wicks  
 Mr. Don Wilkening  
 Mr. & Mrs. R. M. Wilkerson  
 Dr. & Mrs. Noel D. Wilkie  
 Mrs. Juanita Willcutt  
 Mr. & Mrs. Eugene F. Williams, Jr.  
 Mr. Rob Williams  
 Mr. & Mrs. Robert W. Williams  
 Ms. Carole R. Wiltse  
 Mr. & Mrs. Peter Y. Windt  
 Mr. Carey Wintersen-Stock  
 Mr. & Mrs. Theodore J. Wirth  
 Mr. & Mrs. James W. Wojtowicz  
 Mr. Jesse G. Wright, Jr.  
 Mr. & Mrs. Keith Wright  
 Mr. William C. Yarger  
 Dr. & Mrs. Jerry E. Young

**ONE OF ONE THOUSAND SOCIETY**

Evans & Associates  
 Enterprises, Inc.  
 Margie & Robert E. Petersen  
 Foundation  
 Blue Book Publications, Inc.  
 Mr. & Mrs. Robert D. de Harde  
 Mr. W. P. Hallstein  
 Mr. & Mrs. Leonard C. Hoelt  
 Mr. & Mrs. Thomas K. Hutchinson  
 Mr. Grady L. Jacobs  
 Mr. Robert L. Kassab  
 Mr. L.W. Kelly  
 Dr. & Mrs. Kenneth O. Leonard  
 Mr. & Mrs. George G. Matthews  
 Mr. & Mrs. John H. Newton  
 Mr. Mike Salisbury  
 Mr. & Mrs. Clint Smith  
 Mr. Peter M. Wege

**CFM SUSTAINER**

John C. Bivona, Jr., M.D.  
 Mr. & Mrs. Benjamin H.  
 Gannett  
 Mr. Richard D. McDougall  
 Mr. & Mrs. Nick A. Misciagna  
 Mr. William Caleb Pillsbury, Jr.  
 Mr. Gary S. Rosenbaum

Mr. Clifton C. Schafer  
 Mr. & Mrs. Charles G. Walker III

**CFM SPONSOR**

Dixie Gun Works, Inc.  
 High Noon Western  
 Collectibles  
 J. D. Trimpa Farms, LLC  
 Marlin Firearms Company  
 Sold USA.com  
 Guns Galore  
 LittleJohn's Auction Service, Inc.  
 Butterfield & Butterfield  
 Mr. James S. Albright  
 Mr. Delbert L. Aury  
 Mr. Vince Baertschi  
 Mr. Steve Ballard  
 Mr. Edwin J. Bell  
 Mr. Greg Bernards  
 Mr. Bill Birkbeck  
 Mr. Leon Budginas  
 Mr. Keith Candee &  
 Ms. Lori Ries  
 Mr. & Mrs. Thomas K. Carpenter  
 Mr. M. A. Carty, Jr.  
 Mr. Donald E. Coate  
 Mr. Darrell Cobbs  
 Mr. Bruce L. Cohen  
 Mr. David F. Condon  
 Mr. Jack W. Deaton  
 Donald T. Deininger  
 Mr. Wolfgang Dicke  
 Mr. & Mrs. Thomas B. Dintruff  
 Mr. & Mrs. Donald B. Dobb  
 Mr. Jerry Ellenberger  
 Mr. Martin Errea  
 Mr. & Mrs. Zennen Ervin  
 Mr. Michael Escola  
 Mr. Jeff Faintich  
 Mr. James W. Falkowski  
 Mr. Robert V. Fitz'Gerald  
 Mr. & Mrs. Wallace W.  
 Francis, Jr.  
 Mr. John W. Giaconia, Jr.  
 Mr. William A. Giaconia  
 Mr. & Mrs. Herb Glass  
 Mr. James D. Gordon  
 Mr. Thomas P. Grainger  
 Mr. Tom Hagan  
 Mr. Jack Harrod  
 Mr. Ronald Hartman & Mr.  
 Richard Hartman  
 Dr. & Mrs. Ladd L.  
 Heldenbrand  
 Mr. James R. Heller  
 Mr. & Mrs. Richard L. Hollow  
 Mr. Denny Hornbeck  
 Mr. William H. Hornby  
 Mr. John O. Houchins  
 Mr. Leonard R. Hug  
 Mr. Jeffery C. Isble  
 Dr. Donald Jewell



Mr. Bruce Kasper  
 Mr. Daniel Katz  
 Mr. Frank J. Kelley IV  
 Mr. Chris Kemmerly  
 Mr. Al Kinman  
 Mr. Bill V. Kopfman  
 Mr. Douglas S. Leigh  
 Mr. & Mrs. Douglas M. LeSage  
 Mr. & Mrs. Philip A. LeVasser  
 Mr. Bruce Leven  
 Mr. Mitchell L. Luksich  
 Mr. & Mrs. John Madl  
 Mr. & Mrs. Greayer  
 Mansfield-Jones, Jr.  
 Mr. Dennis D. Meinert  
 Mr. Terry L. Miller  
 Mr. William F. Mitchell  
 Mr. Jim Nauwens  
 Mr. William Oxley  
 Mr. David S. Parker  
 Mr. Walt Pearson  
 Mr. & Mrs. James C. Perry  
 Mrs. Grace Picaglia  
 Mr. John Picchiatti  
 Mr. George Ranzau  
 Mr. Gary H. Reynolds  
 Mrs. Mary Ann Riordan  
 Mr. Vaughan Ruple  
 Mr. & Mrs. Nicholas G.  
 Rutgers, Jr.  
 Mr. Dan Schlegel  
 Mr. & Mrs. Konrad F.  
 Schreier, Jr.  
 Mr. Jack Schubert  
 Mr. Donald Shurr  
 Mr. C. W. Slagle  
 Mr. William E. Smart  
 Mr. William E. Surette  
 Mr. George E. Thompson  
 Mr. Duane Torgeson  
 Mr. & Mrs. Tim Trabon  
 Mr. David W. Vaughan  
 Mr. Steve Walters  
 Mr. George T. Warman, Jr.  
 Mr. Brad Watkins  
 Mr. & Mrs. Franklin A. West  
 Mr. Doug Wight  
 Mr. John L. Wilkinson  
 Mr. & Mrs. J. D. Winzenried  
 Mr. Kenneth D. Ziese  
 Mr. Richard Zorin

Nagel Gun Shop  
 Cowboy Musuem  
 Winchester Arms  
 Collectors Assn.  
 Wolfe Publishing  
 Classic Munitions Co., Inc.  
 Gun Sport, Ltd.  
 D&B Guns & Shooters Supply  
 Eller's Hunting Post  
 Altermann & Morris Galleries  
 Old Fontenelle Gun Shop  
 Montana Outfitters  
 Lunenschloss Marine &  
 Sporting Goods  
 Larry's Shooting Supplies  
 Ron's Guns, Inc.  
 Silver Dollar Gun & Pawn  
 Pony Express Sport Shop, Inc.  
 Riley's Sport Shop Inc.  
 Gibson-Thomas Engineering  
 Co., Inc.  
 Jerry's Gun Shop  
 Barnes Guns, Inc.  
 Legendary Guns of the West  
 Collectable Arms  
 International Inc.  
 Mr. & Mrs. Ralph J. Aab  
 Mr. Brian G. Abel  
 Mr. John W. Adair  
 Mr. Tom Adams  
 Mr. William Adams  
 Mike and Cara Ahner  
 Mr. Roger Akers  
 Mr. R.D. Alderson  
 Mr. Mark R. Aldridge  
 Mr. James M. Alexander  
 Mr. Melvin R. Allen  
 Robert and Georgann Allen  
 Mr. & Mrs. Robert E. Allen  
 Mr. & Mrs. Terry Allen  
 Mr. John E. Ambach  
 Mr. Lee Andersen  
 Mr. B. E. Anderson  
 Mr. David Angelucci  
 Mr. Rick Anwyl  
 Mr. Clark Applegate  
 Mr. John M. Appleton  
 Mr. George Armantrout  
 Mr. Harry H. Arrington  
 Mr. Richard Arrowood  
 Mr. David A. Arthur  
 Mr. & Mrs. Philip J. Asbornio  
 Dr. & Mrs. Gerald E. Asher  
 Mr. Scott Ashley  
 Mr. Steve Auerbach  
 Mr. Alex Avila  
 Mr. Philip Bailey  
 Mr. Richard Owen Baish  
 Mr. Edward Baker  
 Dr. M. C. Baker  
 Mr. Harvey Knox Baldwin  
 Mr. George D. Ballard  
 Mr. Eugene Ballou

Mr. Merton J. Bangerter  
 Mr. Lloyd Barden  
 Mr. Robert L. Barlow  
 Mr. Kirk Barnes  
 Mr. Steve Barnett  
 Mr. Robert Barr  
 Mr. Larry Barrett  
 Dr. James Barta  
 Mr. & Mrs. Stan Barta  
 Mr. Robert W. Bartlett, Jr.  
 Mr. Steven Bartow  
 Mr. George Bassett  
 Mr. Larry D. Beall  
 Mr. Franklin D. Beasley  
 Mr. & Mrs. F. J. Beckman  
 Mr. & Mrs. Felix A. Bedlan  
 Mr. Paul Z. Bennett  
 Mr. Raymond B. Bentley  
 Mr. Steve Berg  
 Mr. & Mrs. Steven D. Berman  
 Mr. Vernon J. Berning  
 Mr. Joseph E. Bernolfo  
 Mr. Joseph Beverly  
 Mr. & Mrs. David P. Bichrest  
 Mr. Ned Bishop  
 Mr. John Blackburn  
 Mr. James W. Blair  
 Mr. Walter Blair  
 Mr. Joe Blakeley  
 Mr. Vern Blanton  
 Mr. Phil Bleakney  
 Mr. Mark Blote  
 Mr. Stephen Bly  
 Mr. T. G. Bodell  
 Mr. Sal Boncross  
 Mr. Peter Boruchowski  
 Mr. Max Bosworth  
 Mr. Brian Bourbeau & Mrs.  
 Melissa Moreland Bourbeau  
 Mr. L. L. Bowman  
 Mr. William Bowser  
 Mr. Francis W. Boyle  
 Mr. Christopher E. Bracher  
 Mr. O. Kyle Bradley  
 Mr. Leo H. Bradshaw, Jr.  
 Mr. & Mrs. Edward A.  
 Brandhorst  
 Mr. Ray Brazille  
 Mr. Robert Brecht  
 Mr. & Mrs. Michael L.  
 Brinkmann  
 Mr. Dean Brock  
 Mr. Mitch Brock  
 Mr. Ronald Brock  
 Mr. & Mrs. Dennis C. Brooks  
 Mr. Lynn A. Brooks  
 Mr. Carl Brostedt  
 Mr. Michael Brown  
 Mr. Anthony J. Brozovich  
 Dr. & Mrs. Kurt S. Bucholz  
 Mr. Marshall Buck  
 Mr. Albert D. Buckingham  
 Mr. Terrill E. Buffum

Mr. Hans P. Bulgheroni  
 Mr. Bill Burnaugh  
 Mr. Tom Burness  
 Mr. Neil S. Burnham  
 Mr. Gerald W. Bursi  
 Mr. John Burton  
 Mr. Robert J. Burton  
 Mr. David Bush  
 Mr. David Bushing  
 Mr. Richard D. Buswell  
 Mr. Matthew J. Buzzell, Jr.  
 Mr. Forest Cague  
 Mr. & Mrs. Michael J. Cairns  
 Mr. Keith W. Campbell  
 Mr. Ronald Cantrell  
 Mr. Vincent Caponi  
 Mr. Brooks Cargile  
 Mr. Larry W. Carpenter  
 Mr. Robert K. Carr  
 Mr. Michael Carrick  
 Mr. Michael R. Carter  
 Mr. & Mrs. Robert C. Carter  
 Mr. & Mrs. John E. Castor  
 Mr. Herschel Chadick  
 Mr. Randall B. Chaffin  
 Mr. Michael Chance  
 Mr. Michael Cherok  
 Mr. Kevin P. Cherry  
 Mr. Ronald Cholasinski  
 Dr. Lance Christensen  
 Mr. Thomas Clapper  
 Mr. Michael P. Clark  
 Mr. Thomas L. Clark  
 Mr. Thomas Clarke  
 Mrs. Linda A. Clarke  
 Mr. Elden Clemens  
 Mr. Mac A. Coalson  
 Mr. & Mrs. Robert J. Cody  
 Mr. Leigh F. Coffin  
 Mr. Leigh M. Coffin  
 Mr. William A. Colbeck  
 Mr. Ken Cole  
 Mr. Michael H. Collins  
 Mr. Robert J. Connolly  
 Mr. Larry Conti  
 Mr. Michael Cook  
 Mr. & Mrs. Clayton E. Cooper  
 Mr. Russell M. Coover  
 Mr. Alvin H. Cornell  
 Mr. Michael Coston  
 Mr. Beryl Coulson  
 Mr. Liscom Cox  
 Mr. John Crabtree  
 Mr. John F. Craig  
 Mr. Frank Crawford  
 Mr. Donald L. Criswell  
 Mr. Richard Crosier  
 Mr. Donald E. Crowe  
 Mr. James J. Curlovic  
 Mr. George Dabney  
 Mr. Dave Dais  
 Mr. & Mrs. Arthur B. Dalgarno  
 Mr. Don Daughenbaugh

#### CFM FRIEND

Christie's Auction House  
 Big Sky Rifle Ranch  
 Schultheis Sporting Goods, Inc.  
 Warner's Gun Shop  
 Mid West Gun Exchange  
 J. C. Devine, Inc.  
 Johnsrud Enterprises, Inc.  
 Shooters Den  
 Amoskeag Auction Co., Inc.



Mr. Gregory Davis  
Mr. & Mrs. James S. Davis  
Mr. William Davis &  
Mrs. Mary E. Davis  
Mr. Russell Day  
Mr. & Mrs. Stephen E. Day  
Mr. B. Richard Dedge  
Mr. Christian DeGuigne IV  
Mr. Michele Deluca  
Mr. Don DeMatteis &  
Mr. Charles S. Hackett  
Mr. Ray Dennis  
Tom and Dayna Dent  
Mr. Les Dillman  
Mr. Jake D. DiMicheli  
Mr. Rick Doden  
Mr. Joe Domann  
Mr. Frank Dorman  
Mr. Steve Dowdy  
Mr. Ken Doyle  
Mr. Randolph S. Dozier  
Mr. Winfred L. Dudley  
Mr. Doug Duever  
Mr. George J. Duffy  
Mr. Gary R. Dunn  
Mr. Ron Dunnells  
Mr. Karl Durkheimer  
Dr. Russell R. Dutcher &  
Dr. Linda Dutcher  
Mr. Brian Dwyre  
Mr. Lester M. Dyke  
Mr. Danny Eagan  
Mr. Walter C. Earl  
Mr. Paul Edgar  
Mr. & Mrs. John Edmondson  
Mr. Don Eicher  
Mr. Bob Eisentrager  
Mr. William G. Ellis  
Mr. & Mrs. Walter C. Emery  
Mr. Cliff Ericksen  
Mr. & Mrs. Peter E. Erickson  
Mr. Norbert Ertel  
Mr. Olin C. Ervine  
Mr. Raymond Esola  
Mr. Bryce Evans  
Mr. Leigh D. Evans  
Mr. Steven L. Evans  
Mr. & Mrs. Thomas L. Evans  
Mr. & Mrs. Robert Everhart  
Mr. Mark Eysoldt  
Mr. Douglas Faery  
Mr. A. C. Fairbanks  
Mr. Jack Farley  
Mr. Peter Farris  
Mr. Gary Featherston  
Mr. John Fera  
Mr. Floyd Ferguson  
Mr. & Mrs. Paul Ferrara  
Mr. Frank J. Finch, Jr.  
Mr. Paris Fisher  
Mr. Edwin H. Fitler  
Mr. Kevin Fitzgibbon  
Mr. & Mrs. David G. Flurkey

Mr. Bob Ford  
Mr. Henry C. Ford  
Mr. & Mrs. Lawrence D.  
Forsythe  
Mr. & Mrs. Jerry L. Fountain  
Mr. John E. Fox  
Mr. Jimmy L. Franks  
Mr. Richard Freer  
Mr. David French  
Mr. Mort Friedman  
Mr. & Mrs. Paul I. Friedrich  
Dr. Henry Fronc, Jr.  
Mr. Ken Fry  
Mr. John A. Fucci  
Mr. & Mrs. William M. Furnish  
Mr. Frank C. Gaetje  
Mr. Antony Galazan  
Mr. Michael Gallenberg  
Mr. Roger Gantnier  
Mr. Gregory Garlick  
Mr. Roy F. Garris  
Mr. Alex Gaspelum  
Mr. Stan Gates  
Mr. Bob Gegerson  
Mr. Nicholas J. Geibel  
Mr. Roger Gervais  
Mr. Humbert Ghirlanda  
Mr. Max Gibson  
Mr. Michael L. Ginn  
Mr. John Girard  
Mr. Joe Glasscock  
Mr. Robert M. Godbout  
Mr. John Godsoe  
Mr. & Mrs. James P. Goergen  
Dr. James M. Goforth  
Mr. Arthur J. Gogan  
Mr. Sonny Goode  
Mr. William T. Goodman  
Mr. Herbert Gopstein  
Mr. James N. Gordon  
Mr. Tulane Gordon III  
Mr. James B. Gossett  
Mr. Randy Gott  
Mr. Gary Gottberg  
Mr. Floyd D. Gottwald, Jr.  
Dr. Sol Gourji  
Mr. Dan Gracious  
Mr. Jerry Gagnani  
Mr. Richard Gratiot  
Mr. David Graves  
Mr. Travis Graves  
Mr. Morton E. Gray  
Mr. William C. Gray  
Mr. Charles H. Gray II  
Mr. Arthur F. Green  
Mr. Tony Gregory  
Mr. William Greiner  
Mr. John J. Greskowitz  
Mr. Don Grooms  
Mr. Steven Groskopf  
Mr. Anson Grosvenor  
Mr. Frederick Grote  
Mr. & Mrs. Don Grove

Mr. George J. Grover, Jr.  
Mr. Perry Gruhlkey  
Mr. Todd Gurganus  
Mr. & Mrs. Tommy B. Haas  
Mr. William E. Haase  
Mr. Daniel F. Habersaat  
Mr. Gary W. Haile  
Mr. Mark Halcon  
Mr. Leo Hamel  
Mr. & Mrs. Hal Hamilton  
Mr. Steve W. Hamilton  
Mr. & Mrs. Richard Hammer  
Mr. C.L. Hancock  
Mr. Denny Hanel  
Mr. & Mrs. Gordon L. Hansen  
Mr. John R. Hansen, Jr.  
Mr. Ted Hansen  
Dr. Joseph Hardage, M.D.  
Mr. Henry E. Harker, Jr.  
Mr. Robert Harlock  
Mr. Dan Harrier  
Mrs. Fredric A. Harris  
Mr. James Harris  
Mr. John L. Harris  
Mr. Michael Hart  
Mr. Mike Harvey  
Mr. William L. Harvey  
Mr. Elbert E. Hash  
Mr. Michael Hatton  
Mr. Tom A. Hauptmann  
Mr. David Haviar  
Mr. John B. Hawk  
Mr. & Mrs. John Hawk  
Mr. Kim Hayes  
Mr. Don Hazlewood  
Mr. David Healy  
Mr. Oliver Heer  
Mr. Doug Heiser  
Mr. Jeff Helgert  
Mr. William V. Hice  
Mr. Wynn G. Higby  
Mr. & Mrs. Rick L. Hill  
Mr. Duke Hingley  
Mr. Charles E. Hinton  
Mr. Richard A. Hleuka  
Mr. & Mrs. Glenn J. Hockett  
Mr. & Mrs. Richard D.  
Hodgins  
Mr. Alan E. Hoeweler  
Mr. Will Hoffeld  
Mr. Bob Hoffman  
Mr. Walter O. Hoffman  
Mr. & Mrs. Monte Hofstrand  
Mr. Charles K. Hoins  
Mr. Richard Hokin  
Mr. Pete Holder  
Mr. Roger Holland  
Mr. Jim Holley  
Mr. & Mrs. Reginald R.  
Holloway  
Mr. Lauren Holz  
Mr. Charles Hoopaugh  
Mr. Finley Hootsell

Dr. Ray E. House &  
Dr. Linda L. House  
Mr. Virgil Howard  
Mr. Steve Howe  
Mr. Kenneth P. Howell  
Mr. E. K. Howell, Jr.  
Mr. Gary W. Hubbs  
Mr. Lawrence Hudson, Jr.  
Mr. Christian Humbert  
Ms. Jennifer P. Hunter  
Mr. Peter Ide  
Mr. Richard Ingle  
Mr. Charles Jackson  
Mr. William A. Jackson  
Mr. Michael Jakob  
Mr. Jeff Jankowski  
Mr. Gary Jensen  
Mr. James R. Johnson  
Mr. Kurt R. Johnson  
Mr. & Mrs. Norman Johnson  
Mr. Robert D. Johnson  
Mr. & Mrs. Steve Johnson  
Mr. Walter W. Johnson  
Mr. Terry Joles  
Mr. & Mrs. Larry W. Jones  
Mr. Mike Jones, Sr.  
Mr. Ron Jones  
Mr. Dennis Juelson  
Mr. Victor Juskauskas  
Mr. Haig Kachian  
Dr. James W. Kahre  
Mr. Jerry Kaiser  
Mr. & Mrs. Mike Kammerer  
Mr. Braden B. Kane  
Mr. John Kay  
Mr. Robert Keefer  
Mr. & Mrs. Robert Keller, Jr.  
Tom & Paula Keltner  
Mr. G. B. Kenny  
Mr. Brian Kent  
Mr. Carter Kerns  
Mr. James W. King  
Mr. Bruce W. Kirk  
Mr. Kenneth Kirk  
Mr. Joseph H. Kiser  
Dr. Gerald Klaz  
Mr. Dennis Klimaszewski  
Mr. Keith T. Kmetz  
Mr. Kenneth L. Knighten  
Mr. J. W. Koch  
Mr. Andrew Kocisko  
Mr. Jim Koenecke  
Mr. Michael D. Kokin  
Mr. James R. Korbelik  
Mr. Bob Korenke  
Mr. Mark J. Kovacevich  
Mr. Donald M. Koval  
Mr. Frank J. Kovar  
Mr. Ryan Kowalski  
Mr. William F. Krause  
Mr. Scott Kremmel  
Mr. Keith Kristjanson  
Mr. & Mrs. Edward D.



Kukowski  
 Mr. Roger Kurtz  
 Mr. Compton LaBauve, Jr.  
 Mr. Bill Lackey  
 Mr. Harald Lamberts  
 Mr. Gregory A. Lampe  
 Mr. & Mrs. John R. Lampe  
 Mr. Eddie Land  
 Mr. Michael S. Land  
 Mr. & Mrs. John M. Lang  
 Mr. & Mrs. Kenneth A. Lange  
 Mr. & Mrs. J. R. LaRue  
 Mr. Brant M. Laue  
 Mr. Jim Ledbetter  
 Mr. Jerry D. Lee  
 Mr. & Mrs. Jerry Lee  
 Mr. Al Leet  
 Mr. Bob Lenius  
 Mr. Carl Lind  
 Mr. John D. Lindgren  
 Mr. & Mrs. Donald H. Littman  
 Mr. Cliff Logan  
 Mr. Lyle C. Logan  
 Mr. Steven Longfellow  
 Mr. John W. Loomer  
 Mr. Dick Loper  
 Mr. Norman Lorensen  
 Mr. Joseph Lorsung  
 Mr. Roderick Love  
 Mrs. Karen Lovejoy  
 Mr. & Mrs. George W. Loving  
 Mr. Eddie W. Luke  
 Mr. G. Robert Lyles, Jr.  
 Mr. Richard H. Lyons  
 Mr. Danial MacPhail  
 Mr. Ed Madden  
 Mr. & Mrs. John N. Maddux  
 Mr. George Madis  
 Mr. Joel Maertens  
 Mr. B. J. Maes  
 J.A. Magnuson  
 Mr. A. G. Malinconico  
 Mr. John J. Malloy  
 Mr. Jim Malone  
 Mr. Monte Mandarino  
 Mr. James Mangan  
 Mr. & Mrs. Robert A.  
 Manganiello  
 Mr. Jacques Mann  
 Mr. Terry Marcum  
 Mr. Paul Markstrom  
 Mr. Tony Marsh  
 Dr. Kenneth Martin  
 Mr. & Mrs. Marvin Martin  
 Mr. Rod Martin  
 Mr. Stephen Martin  
 Mr. Greg Marx  
 Mr. Edward M. Masad  
 Mr. Rudy Massenzi  
 Mr. Vaughn Masthoff  
 Mr. Edward T. Masuda  
 Mr. Glen E. Mattox  
 Mr. Dennis McClelland

Mr. Gerald W. McCormick  
 Mr. James McCoskey  
 Mr. Frank McCoy  
 Mr. Arlin McCroskie  
 Mr. David F. McCubbin  
 Mr. Jim McDaniel  
 Mr. Lyle McDermott  
 Mr. Chris McGary  
 Mr. & Mrs. Charles H.  
 McKinley  
 Mr. Hugh S. McLean  
 Mr. Vince McMahan &  
 Mr. Peyton Clark  
 Mr. & Mrs. John D. McMillan  
 Mr. Paige McNeill  
 Mr. Mike Medwid &  
 Mr. William Medwid  
 Mr. Len Meents  
 Mr. Joe Melanson  
 Dr. Daniel H. Menser  
 Mr. Jack Mercer  
 Mr. Tim Mercer  
 Mr. David Merritt  
 Mr. Le Roy Merz  
 Mr. Mike Methe  
 Mr. Joel Mikres  
 Mr. Jack Miller  
 Ms. Joann F. Miller  
 Mr. L. D. Miller III &  
 Mr. Jay Miller  
 Mr. William J. Miller  
 Mr. Homer Mills  
 Mr. Melvin E. Mills, Jr.  
 Mr. Ross N. Mills  
 Mr. James C. Mitchell  
 Mr. & Mrs. Robert H. Mitchell  
 Mr. David Monie  
 Mr. W. F. Mooneyham  
 Mr. Manuel D. Moraes  
 Mr. Patrick R. Moran  
 Mr. Evy M. Morgan  
 Mr. Gordon Morgan  
 Mr. Charles J. Moskowitz  
 Mr. Rick Mosley  
 Mr. David Muir  
 Mr. Dennis Mulvey  
 Mr. Michael Murphy  
 Mr. Philip Murphy  
 Dr. Howard L. Mussell  
 Mr. David Myers  
 Mr. David W. Myers  
 Mr. David A. Nelson  
 Mr. Jeff Nelson  
 Mr. John Neumann, Jr.  
 Mr. Richard Newberry  
 Mr. M. R. Newbold  
 Mr. Irvin D. Nicholas, Jr.  
 Mr. Robert D. Nichols  
 Mr. Chris E. Nikolaisen  
 Mr. John H. Noble  
 Mr. Ken Noble  
 Mr. & Mrs. Ray O. Norberg  
 Mr. James R. Nossett &

Mr. Richard Sanford  
 Mr. Ronald H. Nyman  
 Mr. Bert O'Neill, Jr.  
 Mr. & Mrs. Robert W. Obreiter  
 Mr. Don Ocumpaugh  
 Mr. & Mrs. Milt Ocumpaugh  
 Mr. Lynn Odean  
 Mr. Tom Odom  
 Mr. Larry S. Olson  
 Mr. Larry Orr  
 Mr. Worth Orvin, Sr.  
 Mr. & Mrs. Carl D. Ostling  
 Mr. Eldon J. Owens  
 Mr. Edward Pacilio  
 Mr. Andy Palmer  
 Mr. & Mrs. David &  
 Rose Palmiter  
 Mr. James Parker  
 Mr. Robert Parker  
 Dr. H. Lynn Parsons, M.D.  
 Mr. Dan Partin  
 Mr. Calvin Patrick, Sr.  
 Mr. James W. Paul  
 Mr. & Mrs. Daniel Pauly  
 Mr. & Mrs. Garald Paxton  
 Mr. Len Pearson  
 Mr. Steven Pegg  
 Mr. Joe Pendergast  
 Mr. Steven H. Perrins  
 Mr. & Mrs. Al Perry  
 Mr. Bill Perry  
 Mr. Carl T. Petersen  
 Mr. Daniel Petersen  
 Mr. Ronald C. Petersen  
 Mr. & Ms. J. C. Peterson  
 Mr. Robert H. Petrarca  
 Mr. John Pickard  
 Mr. Richard E. Pierce  
 Mr. William Q. Pirie  
 Mr. Timothy W. Plecher  
 Mr. Kermit R. Plough  
 Mr. Wayne Poole  
 Mr. Dean Porter  
 Mr. Thomas A. Porter  
 Mr. Allen Postel  
 Mr. Tim Powell  
 Mr. Joe Prather  
 Mr. Richard Prather  
 Mr. & Mrs. Gary Presson  
 Mr. Michael Prince  
 Mr. Russell Proctor  
 Mr. & Mrs. J. D. Proops  
 Mr. Hal Prucha  
 Mr. & Mrs. Bill Pruitt  
 Mr. Jack A. Puglisi  
 Mr. Lawrence Purdon  
 Mr. Dan Pursley  
 Mr. Sergio Pustogorodsky  
 Mr. Gregory Putz  
 Mr. & Mrs. Raymond L. Pylant  
 Les and Jan Quick  
 Mr. Carroll Quinby  
 Mr. Gary W. Quinlan &

Mr. Dale Troutman  
 Mr. Joseph T. Quinn  
 Mr. Roger F. Quisenberry  
 Mr. David Quist, Sr.  
 Mr. Doug Rainbow  
 Mr. & Mrs. Wilburn J. Raithe  
 Mr. Jim Ram  
 Mr. Richard Raymond  
 Mr. Robert Rayzak  
 Mr. Robert E. Reabe  
 Mr. Larry Ready  
 Mr. & Mrs. Bob E. Reed  
 Mr. Peter Reese  
 Mr. Les Reitan  
 Mr. Robert C. Renneberg  
 Mr. & Mrs. Tommy L. Rholes  
 Mr. Robert Ricalton  
 Mr. Angus E. Richardson  
 Mr. Chuck Riedy  
 Mr. Dan Rife  
 Mr. David E. Riffle  
 Mr. James G. Righeimer  
 Mr. & Mrs. George T. Rill  
 Mr. Ray Rink  
 Mr. Arnold Roberson  
 Mr. Frank Roberts  
 Mr. Clarence Robertson  
 Mr. Gary L. Robertson  
 Mr. Bruce Robinson  
 Mr. John B. Robinson  
 Mr. Thomas H. Robinson  
 Mr. Russell Rogerson  
 Mr. Robert W. Rohrig  
 Mr. Lawrence E. Root  
 Mr. John Royer  
 Mr. Robert G. Ruben  
 Mr. William D. Ruckman  
 Mr. Ronald Rumfield  
 Mr. Harold D. Russell  
 Mr. Dan E. Ryan  
 Mr. Randall Saba  
 Mr. Ron Sahnaw  
 Mr. & Mrs. Ray Saign  
 Mr. Joseph L. Salter  
 Mr. Vic Samilenko  
 Dr. Robert M. Sandfort  
 Mr. Herbert B. Sandlin  
 Mr. Bill Sargent  
 Mr. Charles D. Savaia  
 Mr. Kurt H. Saxon  
 Mr. Mike Sayers  
 Mr. Joseph Scarpa  
 Mr. Mark J. Schafer  
 Mr. & Mrs. Roy L. Scharer  
 Mr. Richard Schenk  
 Mr. Marvin Schick  
 Mr. John Schleaf  
 Mr. & Mrs. Bernard Schlosser  
 Mr. Ernest A. Schmidt  
 Mr. Charles Schneible  
 Mr. Donald C. Schofield  
 Mr. John Schuhmacher, Jr.  
 Mr. Bill Schulte



Mr. Daniel A. Schultz  
Mr. & Mrs. Bob G. Schulz  
Mr. Paul H. Schumacher  
Mr. & Mrs. Rodney E. Schwartz  
Dick and Jan Schwartzer  
Mr. A.W. Scott  
Mr. George E. Scott  
Mr. Thad Scott  
Mr. Loren Scovel  
Mr. & Mrs. Pete Scripps  
Mr. Edward D. Scruggs, Jr.  
Mr. Robert S. Searle  
Mr. Randy Sease  
Mr. Tom Selleck  
Mr. Richard Sellers  
Mr. Ben T. Selman, Jr.  
Mr. Jerry Senter  
Mr. John W. Sevey  
Mr. William F. Sevier  
Mr. Steve Seyer  
Judge & Mrs. Jack D.  
Shanstrom  
Mr. Steven Sharps  
Mr. Randy Shaw  
Mr. Bruce Shelley  
Mr. C. D. Shelton  
Dr. Larry Shelton  
Mr. Peter Sherayko  
Mr. Roy Shetka  
Mr. Clark Shields  
Mr. David G. Shirley  
Mr. Jeffery C. Shivers  
Mr. Quincy Shores  
Mr. Daniel L. Shuey  
Mr. Tim Shumaker  
Mr. & Mrs. Randy S. Shuman  
Mr. Louis Sicola  
Mr. & Mrs. James W. Sigmon  
Mr. Charles R. Skillington  
Mr. A.G. Smith  
Mr. Courtney C. Smith  
Mr. Daniel Smith  
Mr. David W. Smith  
Mr. Gary Smith  
Mr. Howard C. Smith  
Mr. Leon Smith  
Mr. Mark Smith  
Mr. Mike Smith  
Mr. & Mrs. Malcolm R. Sneddon  
Mr. William Snyder  
Mr. Paul Sorrell  
Mr. John Spangler  
Mr. Bruce W. Spaulding  
Mr. Bill Spicer  
Mr. & Mrs. Edward B. Stabler  
Mr. Joe Stairrett  
Mr. Ron Stanford  
Mr. & Mrs. Edward E. Stapleton  
Mr. & Mrs. Lewis T. Steadman  
Mr. Charles Stearns  
Mr. Larry Steen  
Mr. Donald Stevens  
Mr. Bill Stewart

Mr. Clyde Stewart, Jr.  
Mr. Dennis Stima  
Mr. & Mrs. Jon R. Stuart  
Mr. Jim Summers  
Mr. John Supanich  
Mr. Jim Supica  
Mr. Steve Svoboda  
Mr. Michael Swaine  
Mr. James Swank  
Mr. Robert O. Swearingen  
Mr. Linden G. Swedeen  
Lt. Col. Robert T. Sweeney  
Mr. Scott Sweep  
Mr. Jeff Switzer  
Mr. John Tarleton  
Mr. Dick Taylor  
Mr. James B. Taylor  
Mr. Jon Taylor  
Mr. Larry Taylor  
Mr. Richard S. Taylor  
Mr. Rob M. Taylor  
Mr. Shawn Taylor  
Mr. Steve Taylor  
Mr. Jim Terrell  
Mr. William Theis  
Mr. Art Thiss  
Mr. John Thomas  
Malcolm R. Thomas  
Mr. Stuart Thomas  
David and Carol Thorn  
Mr. English Thornwell  
Mr. James D. Thrash  
Mr. Rick Thrasher  
Mr. Bill Tibert  
Mr. Douglas Tieszen  
Mr. Billy Tinney  
Mr. Bill Toelke  
Mr. Al Train  
Mr. Ernest C. Trefz  
Mr. Rick Trepanier  
Mr. Howard Tuck  
Mr. Jerry E. Tucker  
Mr. Richard Turcott  
Mr. Doug Turnbull  
Mr. Edward E. Ulrich  
Mr. William Van Horn  
Mr. Steve Van Pelt  
Mr. Ben Van Sant  
Mr. David Van Wart  
Mr. David Vander Werff  
Mr. Lewis Vandeventer  
Mr. & Mrs. Thurston VanHorn  
Mr. & Mrs. Norman A. Vegely  
Mr. Michael L. Venturino  
Mr. Robert Verhaeghe  
Mr. Wally Vernon  
Mr. & Mrs. Charles G. Veselsky  
Mr. & Mrs. Harry L. Viezens  
Mr. Jim Volante  
Mr. & Mrs. Vern Vossler  
Mr. Ted Wahl  
Mr. & Mrs. Peter Wainwright  
Mr. Tom Wait

Mr. Allan Walker  
Mrs. Patsy J. Wallace  
Mr. Bill H. Waller  
Mr. & Mrs. Leon E. Wandler  
Mr. Tom Waters  
Mr. Clifton Watkins  
Mr. Peter H. Watson  
Mr. & Mrs. Walter J. Webb  
Mr. Warren E. Webster  
Mr. John E. Welch  
Mr. Evans E. Wells  
Mr. Jim Wetzel  
Mr. Nicholas I. Wienold  
Mr. Harold Wieser, Jr.  
Mr. Tony Wilcox  
Mr. Steve Willadsen  
Mr. Thomas C. Williams  
Mr. Alec Wilson  
Mr. Allen Wilson  
Mr. Brett Wilson  
Mr. R. L. Wilson  
Dr. & Mrs. Richard A. Wilson  
Mr. Tom Wilson  
Mr. Velton Wilson  
Mr. Richard Wingle  
Mr. Scott Winnop  
Mr. Blake Withrow  
Mr. Ronald D. Witt  
Mr. Franklin M. Wolosek  
Mr. Bobby Wood  
Mr. Doyle Wood &  
Mr. Ron White  
Mr. Eric B. Wright  
Mr. Tim Wyland  
Mr. Ron Yacketta  
Mr. Terry J. Yarema  
Mr. Carl Young  
Mr. Bill Yrulegui  
Dr. & Mrs. Robert J. Zakoff  
Mr. Emil O. Zeman III  
Mr. & Mrs. Dave Zerbe  
Mr. Robert Zimmermann  
Mr. Stephen Zitterich  
Mr. Richard G. Zogby  
Mr. Michael Zomber

#### CORPORATE FOUNDER

Allen & Company Incorporated  
Sierra Trading Post

#### CORPORATE CONTRIBUTOR

Olin Corporation Charitable  
Trust  
Shoshone First Bank  
Two Dot Ranch, Inc.

#### CORPORATE ASSOCIATE

First National Bank & Trust  
Chevron USA Production  
Company

Y-Text Corporation  
Best Western Sunset Motor Inn  
Artcraft Printers of Billings, Inc.  
Mr. & Mrs. David Flitner

#### CORPORATE BENEFACTOR

Shoshone Distributing Co., Inc.  
Basin Mechanical  
Northwest College  
First State Bank of Newcastle  
Gail Construction Co.  
KZMQ - AM/FM  
Energy West  
Leupold & Stevens, Inc.  
Big Horn Cinemas  
Mr. & Mrs. Jeffrey P. Kruger  
Mr. & Mrs. Creed Law

#### CORPORATE SUSTAINER

Yellowstone Newspapers  
Big Horn Basin Orthopaedic  
Clinic, PC  
Cellular One  
Mountain West, Inc.  
J Bar 9 Ranch  
Tanager Beverages  
Community First Bank  
Ivory Rodeo Company  
Marathon Oil Company  
Engineering Associates  
Foundation for North American  
Wild Sheep  
Big Horn Galleries  
Yellowstone Regional Airport  
EPS Specialties Ltd., Inc.  
Northern Gardens Greenhouse  
and Nursery  
Rocky Mountain Sports  
New West Furniture  
T White Communications, Inc.  
Fremont Motor Company  
United Building Center  
The Pollard Hotel  
Double Diamond X Ranch  
Hodgdon Powder Co., Inc.  
Maxwell's  
Simpson, Kepler & Edwards,  
Attys At Law  
Blair Hotels  
Mooncrest Ranch  
Sotheby's  
Cabela's Inc. Retail Division  
The Adventure TV Network  
Pacifcorp - Cody  
Mr. Matthew Bishop  
Mr. & Mrs. Roger H. Murray

#### CORPORATE SPONSOR

Wilder Enterprises  
Rick Zajdel Catering Inc.



Simonton and Simonton  
 Fentress Bradburn Architects, Ltd.  
 Christie's  
 The Termo Company  
 Cody KOA Kampground  
 Medical Indemnity Group  
 Cody Family Practice  
 U.S. Bank  
 Wayne's Boot Shop  
 Prudential Brokerage West, Inc.  
 Wind River Consulting, Inc.  
 Green Turf Lawscapes  
 7D Ranch  
 Shoshone Canyon Tire Co.  
 Graham, Dietz & Associates  
 WyBar Farm  
 Kennecott Energy Company  
 Cook Moving & Storage  
 The Trophy Connection, Inc. &  
 Yellowstone Travel  
 Big Horn Energy  
 Cowan Construction, Inc.  
 H.S. Trask & Co.  
 Meeker Insurance Agency  
 Crum Electric Supply Company  
 American Capital Access  
 Timber Creek Interiors  
 Furniture & Design  
 Lees Carpets  
 Olive Glenn Golf & Country Club  
 Western Real Estate  
 Coca Cola Bottling  
 Yellowstone Printing  
 Hinze, Inc.  
 The Building Center - Cody  
 Sunlight Federal Credit Union  
 Basin Vision Center, PC  
 Color World Printers  
 Spirit Mountain Aviation  
 Bill Cody Ranch  
 Old West Antiques  
 UXU Ranch  
 Wapiti Real Estate, LLC  
 Hillcrest Spring Water, Inc.  
 Schrader Metal & Design  
 Plush Pony  
 Sheridan Capital LLC  
 BC's  
 Irma Hotel  
 Albertson's, Inc.  
 Sunlight Sports  
 Communi Graphics, Inc.  
 Big Horn Glass  
 J. N. Bartfield Art Galleries  
 Cody Stamped Board  
 Ryan Christie,, DDS, PC  
 Pinnacle Bank  
 AT&T Cable Services

Words Worth  
 Mr. Thomas Minckler

#### BUSINESS FRIEND

Eagle of Cody Printing  
 Big Horn Redi-Mix, Inc.  
 Downtowner Liquors  
 Ron's Exxon  
 Sage Realty  
 Pioneer Water Systems  
 Ace Hardware  
 Rimrock Tire Inc.  
 Rogers Marvel Architects  
 Graham Motor Company - Cody  
 Express Pipeline Partnership  
 Riders In The Sky  
 Shoshone Office Supply  
 Buffalo Bill Stations Inc.  
 Phillips and Company  
 Cody Screen Printers & Embroidery  
 Lamplighter Inn  
 JR's Fashions For Men  
 Worland Cleaners  
 Mail Boxes Etc.  
 GP Enterprises, Inc.  
 Tegeler and Associates, Inc.  
 Nelson Insurance  
 Vannoy Law Office  
 Big Horn Paint  
 Shoshone Title  
 Coldwell Banker - Antlers Realty  
 Scheels All Sports  
 Martin-Harris Gallery  
 Food Basket, Inc.  
 Linton's Big R  
 T.L. Quick Construction  
 Haskell Furniture Company  
 Rock Creek Resort  
 Graham Motor Company of  
 Powell  
 Kmart  
 Cedar Ridge Realty  
 H.W. Stewart, Inc.  
 Midwest Fence Company  
 Holm, Blough & Company  
 Grub Steak Expeditions  
 Cassie's Spirits, Inc.  
 Beartooth Floral  
 Stroupe Pest Control  
 Powell Tribune  
 Kodner-Gallery of the Masters  
 Pawnee Irrigation Supply  
 Franca's Italian Dining  
 Cody Veterinary Hospital  
 McDonald's of Cody and Powell  
 Kelly Inn



Star Quilt, Freda Goodsell, Oglala Lakota, Custer, South Dakota, 2000. Cotton fabric, batting, cotton thread. Gift of the Pilot Foundation.

Advanced Heating  
 Gene Webster  
 Medical Center Pharmacy  
 Cash Metals  
 Carter Mountain Consulting  
 Agency  
 Ballard Painting  
 Western Canvas Supply & Repair  
 Park County Title  
 Country Flowers and Gifts  
 Hong Kong Chinese Restaurant  
 Tom's Gun Shop  
 Asphalt Refinishing Services, Inc.  
 Copeland Appliance and Service  
 Sommers & Voerding Real Estate  
 Hilary A. Heminway Interiors  
 Rimrock Dude Ranch  
 Roberts Philosophy  
 Farm Bureau Insurance  
 Nedra Matteucci  
 Gary's Vacuum & Rubber Stamp  
 Blake's Portrait Studio  
 Cody Newsstand  
 Cody Enterprise  
 Our Place  
 Hall & Hall, Inc.  
 The Greenwich Workshop, Inc.  
 West Park County Farm Bureau  
 Insurance  
 Abbey Carpet

Ballard Funeral Home  
 Historic Wyo. Territory &  
 Tecumseh's Frontier  
 Trading Post  
 Big Horn Wholesale, Inc.  
 Taggart Company  
 Mountain Valley Engine Service  
 Simpson Gallagher Gallery  
 National Museum of Wildlife Art  
 Sears  
 US Farm & Ranch Supply Co.,  
 Inc.  
 S & S Audio - Video  
 Leonard Moore, DDS, PC  
 Traditions West, Inc.  
 Eastgate Liquors  
 Carpet Hut  
 Mr. & Mrs. Gary Bailey  
 Mrs. Marian Lyeth Davis  
 Mr. & Mrs. Ron Dube  
 Dr. & Mrs. Selvoy M. Fillerup  
 Mr. Ed Kenney  
 Dr. James W. Landers, DDS  
 Mr. & Mrs. J. Nichols Patrick  
 Mr. & Mrs. Paul Rankin  
 Ms. Nancy Ruskowsky  
 Mr. & Mrs. Ike Sankey  
 Dr. Debra G. Weinberger  
 Ms. Barbara J. Wilkerson



# ACQUISITIONS

## WHITNEY GALLERY OF WESTERN ART

M. J. Asay

*Buffalo Bill on Horseback (after poster image "The Scout . . .")*, 1894.

Oil on canvas.

Gift of Michael and Pat Del Castello.

Earl Biss (1947-1998)

*General Custer in Blue and Green*, 1996.

Oil on canvas.

Gift of Mr. and Mrs. Charles B. Israel of Aspen, Colorado.

George Elbert Burr (1859-1939)

*Indian Homes, Apache Reservation, Arizona*.

Etching on paper.

Gift of Gloria S. Duffy and Family.

George Carlson (b. 1940)

*Draft Horse #4*.

*Post Horse #1*.

*Untitled*.

*Untitled*.

*Untitled*.

1997.

Series of 5 bronzes.

Casts 11 of 30.

Gift of Jack and Carol O'Grady.

Michael Coleman (b. 1946)

*Cheyenne Winter Camp*, 1976.

Oil on canvas.

Gift of Dick and Helen Cashman.

Michael Coleman (b. 1946)

*In Sunlight Basin*, 2000.

Oil on canvas.

Gift of Anne Young and Jim Nielson.

Michael Coleman (b. 1946)

*Teddy Roosevelt — East Africa*, 1909.

Bronze.

Cast 16 of edition of 40.

Gift of Howard B. and Lili Ann Camden.

Clarice Dreyer (b. 1946)

*Wind Horse*, 1998.

Monotype.

Gift of Miriam and Joe Sample.

L. D. Edgar (b. 1943)

*Stolen Horses — Borrowed Time: Butch Cassidy and the Sundance Kid*, 1994.

Bronze.

Cast 1 of edition of 20.

Gift in Memory of Jan Grosh.

Avard Fairbanks (1897-1989)

*Chief Joseph*.

Bronze.

Gift of Anonymous Donor.

Edward J. Fraughton (b. 1939)

*Last Arrow*, 1978.

Bronze.

Cast 5 of edition of 30.

Gift of Dick and Helen Cashman.

R. V. Greeves (b. 1935)

*Crazy Horse*, 1997.

Bronze, No. 3.

*Washakie — Chief of the Shoshone*, modeled 1999, cast 2000.

Bronze.

Cast 2 of edition of 5.

Gifts of Mike & Kris Kammerer/The Code of the West Foundation.

Allan Houser (1915-1994)

*Drama on the Plains*.

Bronze.

Cast 3 of edition of 100.

Gift of Dick and Helen Cashman.

George Inness (1825-1894)

*View in Berkshire County, Massachusetts, Clearing Off after a September Storm*, 1849.

Oil on canvas.

Gift in Memory of L. G. Phelps and Frances Phelps Belden.

Harry Jackson (b. 1924)

*Sketch for "Burial of a Cowboy,"* 1959.

Wash drawing on paper.

Gift of Joel and Marsha Bretan.

T. D. Kelsey (b. 1946)



R. V. Greeves (b. 1935). *Washakie — Chief of the Shoshone*, modeled 1999, cast 2000. Bronze. Cast 2 of edition of 5. Gift of Mike & Kris Kammerer/The Code of the West Foundation.

*Pillow Talk*, 2000.

Bronze.

Cast 5 of edition of 5.

Gift from the artist in loving memory of his wife, Sidni.

T. Allen Lawson (b. 1963)

*October Moon*, 2000.

Oil on linen mounted on board.

William E. Weiss Purchase Award – 2000 Buffalo Bill Art Show.

Dave McGary (b. 1958)

*Chief Washakie*, modeled 1999, cast 2000.

Bronze with patina and paint.

Cast 10 of edition of 50.

William E. Weiss Fund Purchase.

Thomas Moran (1837-1926)

*Pueblo at Sunset (Laguna)*, 1901.

Oil on canvas.

Museum Purchase with funds from William E. Weiss Fund, Pat and Jerry Evans, The Anne and C.W. Duncan, Jr. Foundation, Mr. and Mrs. Charles Kepler, Mrs. J. Maxwell Moran, John C. Sullivan and Meredith Thompson, Mr. and Mrs. Cortlandt S. Dietler, John



Marse Fund and other pending donations.

Jim Morgan (b. 1947)  
*Crossing Beaver Creek*.  
Oil on canvas.  
William E. Weiss Fund Purchase.

Georgia O'Keeffe (1887-1986)  
*Taos Pueblo*, 1975.  
Lithograph.  
*Road Past the View II*, 1975.  
Lithograph.  
Gift of Jack and Carol O'Grady.

R. H. Palenske (1884-1953)  
*Joining the Circle*.  
Etching.  
Gift of Paula E. Williams.

Linda Raynolds (b. 1953)

*Three Horses Drinking*, 2000.  
Bronze.  
Artist's proof one of two.  
William E. Weiss Fund Purchase.

Frederic Remington (1861-1909)  
*A Steady Goer*, ca. 1890.  
Pen and ink and ink wash on paper.  
Gift in Memory of Dorothy "Lambie" Holsapple.

Frederic Remington (1861-1909)  
*The Bronco*, cast 1985.  
Bronze.  
Gift of Dick and Helen Cashman.

Thom Ross (b. 1952)  
*Scene from Battle of the Alamo*,

2000.  
Acrylic on paper.  
Mary Jester Allen Fund.

Clarence F. Runtsch  
*Daniel B. Wesson*, 1995.  
Bronze.  
*Horace Smith*, 1995.  
Bronze.  
Gift of the Estate of R. B. Wayman.

Robert Seabeck (b. 1945)  
*Big Horn Sheep*, 2000.  
Christmas ornament.  
Gift of the Artist.

Fritz Scholder (b. 1937)  
*Second Dream*. 1981.  
Lithograph.  
*Indian with Feather Fan*, 1975.  
Lithograph.  
*Indian Inside the Kiva*. 1978.

Lithograph.  
*American Landscape*. 1976.  
Lithograph.  
*Blue Eagle*, 1997.  
Acrylic on paper.  
Gift of Jack and Carol O'Grady.

Joseph Henry Sharp Cabin Artifacts and Furniture, 270 items.  
Gift of Mr. and Mrs. Forrest Fenn

Jaune Quick-to-See Smith (b. 1940)  
*Painted Pony Series: Games People Play*, 1985.  
Mixed media on paper.  
Gift of Miriam and Joe Sample.



Thomas Moran (1837-1926). *Pueblo at Sunset (Laguna)*, 1901. Oil on canvas. Museum Purchase with funds from William E. Weiss Fund, Pat and Jerry Evans, The Anne and C.W. Duncan, Jr. Foundation, Mr. and Mrs. Charles Kepler, Mrs. J. Maxwell Moran, John C. Sullivan and Meredith Thompson, Mr. and Mrs. Cortlandt S. Dietler, John Marse Fund and other pending donations.



**PLAINS INDIAN MUSEUM  
ACQUISITIONS**

Feather Dance Bustle, Hugh Little Owl, Crow, Montana, ca. 1974. Golden Eagle feathers, yarn, metal bells, felt. Gift of William G. Rose in memory of Hugh Little Owl.

Man and Woman Dolls, Freda Goodsell, Oglala Lakota, Custer, South Dakota, 2000. Tanned deer hide, cotton and wool cloth, yarn, glass beads, leather, metal tacks, lace, satin ribbon. Gift of the Pilot Foundation.

Cornhusk Bag, Plateau. Cornhusks, pigment, yarn, leather.

Cornhusk Bag, Plateau. Cornhusks, pigment, yarn, leather.

Moccasins. Hide, glass beads, ribbon.

Moccasins. Hide, rawhide, glass beads, leather.

Gloves, Plateau. Hide, glass beads, cloth.

Bracelet. Leather, glass beads, abalone shell.

Bracelet. Leather, glass beads, abalone shell.

Beaded Pouch, Plateau. Hide, glass beads, cotton fabric.

Loomwork. Glass beads, cotton thread.

Horsehair Band. Woven horsehair.

Gifts of Suzanne Thompson Adams.

Woman's Moccasins, Crow, ca. 1930. Hide, glass beads, metal snaps.

Child's Moccasins, Crow, ca. 1900. Hide, glass beads. Gifts of Reverend and Shirley Buswell.

Beaded Vest, Eastern Sioux, ca. 1880. Commercially tanned leather, velvet and satin cloth, glass beads.

Stone Axe Head, found in Boone County, Missouri, Mound Builder culture. Carved stone.

Stone Axe Head, Mound Builder culture. Carved stone.

Stone Axe Head. Mound Builder, Adena culture.

Carved stone. War Club, Plains. Wood, stone, rawhide, glass beads, sinew.

Bandolier, Lakota or possibly Plateau, 1880-1890. Dew claw and claws, leather, string. Gifts of Harry Brittenham.

Beaded Bag, Ellen (Taswatha) Underwood, Cascade Chinook (Wasco), ca. 1899. Cotton and velvet cloth, glass beads, cotton webbing. Gift of Winifred Brooks.

Feather Box Lid, Eastern Sioux, ca. 1870. Carved wood. Gift of Robert W. Martin

Beaded Shoshone Rose Design Dress and Moccasins, Sandra Swallow-Moradi, Vivian Louise Swallow, Wilma Jean Swallow, Eastern Shoshone, 2000. Brain-tanned elk hide (native tanned), glass beads, cotton thread. Gift of Mr. and Mrs. Harold Tate.

Reproductions of (5) Projectile Points from Horner Site, 2000. Flintnapped stone. Gifts of Frison Institute, University of Wyoming, Department of Anthropology.

Basket, Ute, Great Basin, ca. 1880. Reeds and twigs, pine pitch. Gift of Linda Marsteller.

Beaded Man's Vest, Great Lakes, ca. 1930's. Wool and cotton cloth, glass beads, buttons.

Peyote Fan Shawl, Apache, ca. 1960-1970. Cloth, ribbon, thread. Gifts of Cheri Jamison.

Feather Bonnet, Plains, ca. 1890. Eagle feathers, hide, rawhide, glass beads, wool cloth.

Dance Fan, Taos, New Mexico, ca. 1890. Eagle feathers, cotton cloth.

Dance Fan, Taos, New Mexico, ca. 1890. Eagle, peacock, and hawk feathers, cotton cloth. Gifts of Paul and Carol Sarkisian.



Top and right: Beaded Shoshone Rose Design Dress and Moccasins, Sandra Swallow-Moradi, Vivian Louise Swallow, Wilma Jean Swallow, Eastern Shoshone, 2000. Gift of Mr. and Mrs. Harold Tate. Below: Navajo Textile, Mary C. Lee, New Mexico, 1966. Wide Ruin style, vegetal dyed wool. Gift of Mr. and Mrs. Harris Thompson.



Star Quilt, Freda Goodsell, Oglala Lakota, Custer, South Dakota, 2000. Cotton fabric, batting, cotton thread. Gift of the Pilot Foundation.

Tobacco Ceremony Blackfooted Ferret, Crow, ca. 1880. Blackfooted ferret, tobacco, satin ribbon, calf skin, felt, hide, wood and

glass beads, paper tags. Gift of Mr. and Mrs. Van Kirke Nelson.

Navajo Textile, Mary Wingate, Gallup, New Mexico, 1966. Crystal style, dyed wool. Navajo Textile, Sarah Begay, New Mexico, ca. 1960s. Crystal style, vegetal dyed wool.



Navajo Textile, Mary Owens, New Mexico, ca. 1960s. Pine Springs style, dyed wool.  
 Navajo Textile, Mary C. Lee, New Mexico, 1966. Wide Ruin style, vegetal dyed wool.  
 Gifts of Mr. and Mrs. Harris Thompson.

**BUFFALO BILL MUSEUM ACQUISITIONS**

Toy train, "Buffalo Bill's Circus." Museum purchase.

Opera glasses, ca. 1890, inscribed "ICG"; glasses case, ca. 1890, silver engraved "LFC." Museum purchases.

Settee, John Gallis, Switchback Ranch purchase, Western Design Conference.  
 Lithograph/poster, Buffalo Bill, *L'Eroe del Far West*. Museum purchase.

Moviejector Kit, ca. 1930. Museum purchase.

M1890 Winchester .22 caliber rifle, engraved "Hattie Horr from Col. W.F. Cody," ca. 1900. Trade with Mr. Mike Del Castello.

Child's saddle marked "W.F. Cody/Wild West Show," Keystone Bros. San Francisco parade saddle, embellished in silver & gold horseheads on corners. Gift of Mr. and Mrs. Mort Fleischer.

Saddle patterns, saddle-making tools and templates, ca. 1900-1950. Gift of Mr. Victor Alexander, Jr.

Trunk, medals, leather vest, etc. belonging to Gus Thompson, early manager of TE Ranch. Gift of Ms. Suzanne Thompson Adams. (multiple donation to Plains Indian Museum and McCracken Research Library)

Two wooden batons belonging to General Charles King. Gift of Dr. Dugald S. MacIntyre.

Fifty-one Tommy Atkins toy

soldiers, late 20<sup>th</sup> century based on World War I. Gift of Mr. Jack O'Grady.

Lace blouse, possibly Wyoming, ca. 1900. Gift of Ms. Cheri Jamison.

Poster, "Amazing Annie Oakley", four-color lithograph. Gift of Ms. Lynn Entwisle.

Holster and belt, Mexican style, ca. 1939. Gift of Mr. Charles E. Becker, Jr.

Ink stand, enameled lettering "Irma Hotel," ca. 1905. Gift of Dr. Kenneth O. Leonard.

3-Jim Beam commemorative Whiskey Bottles, 1969-1972. Gift of Mrs. Jack Manning.

China display cabinet, ebonied walnut with orientalist open floral sides. Gift of Dr. and Mrs. Peter Simpson.

Three-legged stool for prop use. Gift of Sherry Nordland.

Miscellaneous women's accessories. Gift of Ms. Katherine C. Good.

Straw hat from Buffalo Bill's Wild West, Paris 2000. Anonymous.

Action figure, articulated figure of "Tonto," ca. 1975. Gift of Heritage Center, Pine Ridge, SD.

Bearskin gloves, ca. 1880-1910. Gift of Mr. Richard H. Daley.

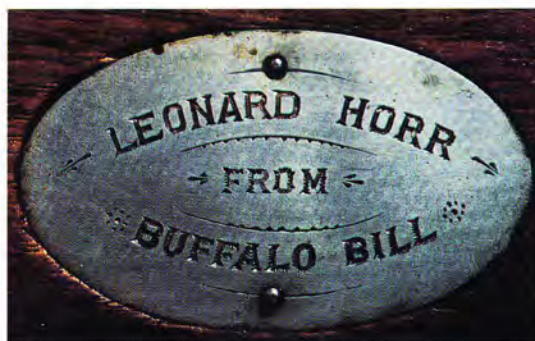
Skirt and vest, black leather, Tex Kennedy, 1935. Bequest of the Estate of J.E. Manning.

**CODY FIRERARMS MUSEUM**

S&W 3<sup>rd</sup> Model target pistol w/trophy and photograph. Museum purchase.

Stoner M63 magazine. Gift of Mr. Jerry Tarble.

Thirty-six bullet molds and tools. Gift of Mr. E.J. "Ted" Bell.



Top: Leonard Horr Model 73 Winchester. Gift of Michael Del Castello. Middle: Child's saddle marked "W.F. Cody/Wild West Show," Keystone Bros. San Francisco parade saddle, embellished in silver & gold horseheads on corners. Gift of Mr. and Mrs. Mort Fleischer. Below: Skirt and vest, black leather, Tex Kennedy, 1935. Bequest of the Estate of J.E. Manning.



Springfield trap door rifle, 1878. Gift of Mr. Simeon Stoddard.

Waterbury clock. Gift of Cody Jewelers.

Sharps Borchardt rifle, post 1878. Gift of Mr. James T. Greene.

Ithaca shotgun and case with various memorabilia of Mrs. Troup Saxon, exhibition shooter. Gift of Mrs. Patricia M. Stanfield.

Two (2) movie rubber prop guns. Gift of Mr. Simeon Stoddard.

Can of Winchester oil, ca. 1940s. Gift of Mr. Warren E. Key.

Selected firearms, miscellaneous books and firearm materials from gift to Plains Indian Museum. Gift of Maurice Postle estate.

Winchester: Five (5) cartridge boards, two (2) advertising lithographs, three (3) calendars — ca. 1880s-1920s. Gift of Wells Family Trust, to be given over several years.

One (1) half stock percussion rifle, Cyrus Jackson, 1818-1827. Gift of Ms. Jean Seitz.

Colt SAA revolver, 1901. Gift of Dr. and Mrs. Peter K. Simpson.

Ruger Super Blackhawk, engraved. Gift of Mr. W. Warren Newman.

Daisy Model 98, engraved. Gift of Mr. Larry Parker.



Top: Daisy Model 98, engraved. Gift of Mr. Larry Parker. Middle: Colt SAA revolver, 1901. Gift of Dr. and Mrs. Peter K. Simpson. Bottom: Ruger Super Blackhawk, engraved. Gift of Mr. W. Warren Newman. Right: Waterbury clock. Gift of Cody Jewelers.

Winchester experimental rimfire cartridge, Model 27, ca. 1950s. Gift of Mr. Daniel L. Shuey.

Four (4) rimfire cartridges, European, 1920s-1990s. Gift of Mr. Joachim Risch.

Miscellaneous ammunition and shells; paper gun targets, etc. Gift of Mr. and Mrs. Robert B. Pickering.

Bowie knife and scabbard, Hawken rifle, attributed to

Liver Eating Johnson. (Affidavit, and *Crow Killer: the Saga of Liver Eating Johnson* accessioned into MRL). Gift of F.W. Roebing, III. (also MRL).

Remington Arms Co. switchblade knife, 1930-1940. Gift of Mr. and Mrs. Alfred M. McCauley.

Remington Model 11; Colt Model 1877 with holster; Winchester Model 1890 with Weaver C4 scope; Winchester Model 1894. Gift of Mr. and

Mrs. McHardy.

Iver Johnson Arms Company pistol, 1910-1920. Gift of Mr. Karl Frielinghausen.

Crosman 600 semi-automatic pistol in original box, pellets, and cartridges. Gift of Mr. and Mrs. Robert B. Pickering.





Stedman Tilghman Manuscript, volume of pressed plants from 1843 — 1844, "From the Plains of the Platte", "Valley of the Sweetwater." Donated by John and Kathryn Heminway.

**DRAPER MUSEUM OF  
NATURAL HISTORY**

Pronghorn (*Antilocopra americana*). Head and shoulder mount. Collected in 1980 in Natrona County, Wyoming. Donated by Frank Baner.

Stedman Tilghman Manuscript, volume of pressed plants from 1843 – 1844, "From the Plains of the Platte", "Valley of the Sweetwater." Donated by John and Kathryn Heminway.

**MCCRACKEN RESEARCH  
LIBRARY**

L.A. Huffman Photographic Studio Collection, items LAH 1988-2038, Thomas Minckler Gallery. Purchase/Donation.

U.S. government copies of printed treaties with various Plains Indian nations, 1858-1869. Gift of Mr. Willis McDonald IV.

Stock templates, drawings and blueprints of S.E. Overton Co., gunstock company records. Gift of Mr. Grafton H. Cook II.

*Story of the Wild West and Campfire Chats* by W.F. Cody,

Richmond, Va.: B.F. Johnson & Co., 1888. Special dealers promotional copy. Gift of Mr. and Mrs. Charles Rodecker.

Winchester Model 12 engineering drawings. Anonymous donation.

Winchester Custom Shop records. Gift of Antony Galazan.

Winchester Custom Shop records. Gift of Mr. Edward Ulrich.

Thomas Marquis photographic negatives of Northern Cheyenne reservation life, ca. 1920s. Museum purchase.

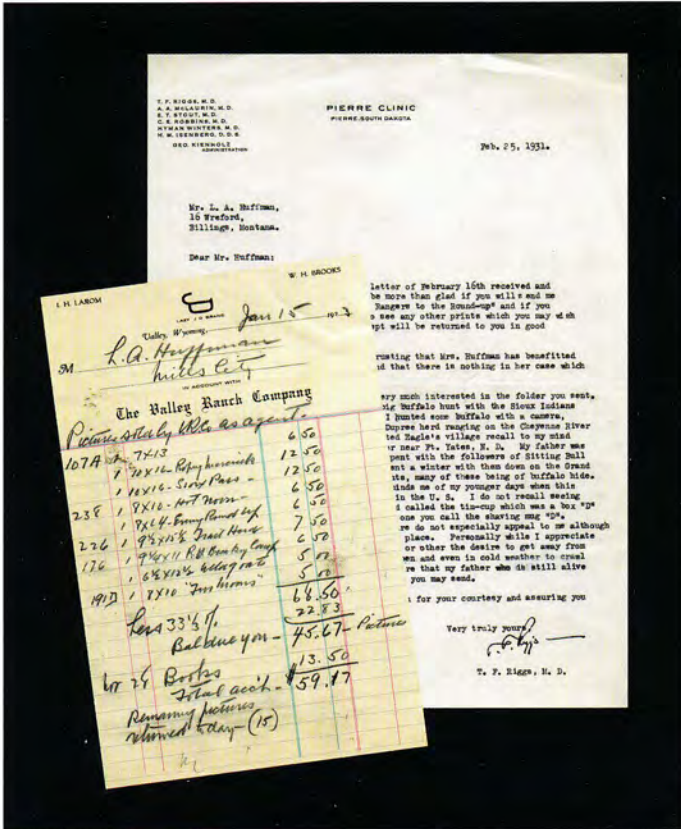
Charles King Collection of books, manuscripts and photographs assembled by Paul Hedren. Final installment of museum purchase.

Tintype of W.F. Cody, age 11, 1857; 4 books from collection of W.F.Cody. Museum purchase.

Winchester Polishing Shop record books of serial number stampings. Purchase/donation through CFM, by Russell R. Dutcher.

Crow Indian photographs (5) by Richard Throssel, and Yellowstone photographs by Haynes (2) and Lucier (1),





Top Left: L.A. Huffman Photographic Studio Collection, items LAH 1988-2038, Thomas Minckler Gallery. Purchase/Donation.

Top right: Thomas Marquis photographic negatives of Northern Cheyenne reservation life, ca. 1920s. Museum purchase.

Below left: U.S. government copies of printed treaties with various Plains Indian nations, 1858-1869. Gift of Mr. Willis McDonald IV.

and a brochure on Buffalo Bill. Gift of Ms. Suzanne Thompson Adams.

Collection of 20th century horse racing track ephemera, over 2000 pieces. Gift of Mr. Joseph J. Sherwood.

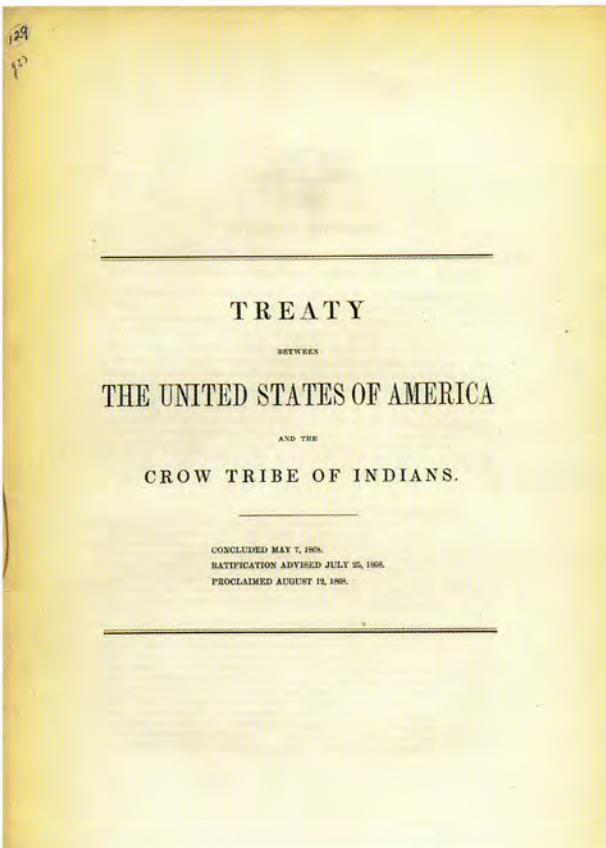
521 Firearms advertisements, articles, and brochures, 18702-1950s. Gift of Mr. Roy Marcot.

Collection of art publications and research materials on Fritz Scholder. Gift of Mr. Jack O'Grady.

Contact print from a 1909 panoramic negative (also BBM). Gift of Mr. Kelly Snyder.

ADDITIONAL CONTRIBUTORS TO MCCRACKEN RESEARCH LIBRARY SHELF COLLECTION INCLUDE:

- Mr. and Mrs. William D. Weiss
- The Simpson Family
- Mr. Wallace Johnson
- Mr. Charles Pfeiffer
- Mrs. Debbie Steele
- Mr. Leo A. Platteter
- Dr. Gerhart Hoffman
- Dr. Paul Schullery
- Mr. B. Byron Price
- Dr. Robert B. Pickering
- Dr. Paul Fees
- Dr. Chuck Preston
- Mr. Nathan Bender
- Mr. Rick Rinehart
- Mr. and Mrs. Charles Rodecker
- Mr. F.W. Roebling, III







Joseph Henry Sharp Cabin Artifacts and Furniture, 270 items. Gift of Mr. and Mrs. Forrest Fenn. Left: Roycroft Settee, ca. 1905. Oak; height 40 inches. Right: Roycroft Morris Chair, ca. 1905. Oak; height 44 inches.

Antler Inn  
 Aune's Absaroka Angler  
 Mr. John Banovich  
 Mr. Bob Barlow  
 Mrs. Deborah Benfield  
 Best Western Sunset Motor Inn  
 Big Horn Galleries  
 Big Skull Buffalo Ranch  
 Big Sky Racks, Inc.  
 Blair Hotels  
 Bue Crafts & Construction  
 Burl Inn  
 Carter Mountain Motel  
 Celotex  
 Mr. Reid Christie  
 Coca Cola Bottling  
 Cody - Rocky Mountain Music  
 Cody Motor Lodge  
 Cody Rock Gym  
 Cody Rodeo Company  
 Mrs. Henry H.R. Coe  
 Coffee Saloon  
 Mr. Michael Coleman  
 Connoisseur Hawaii Hotels  
 The Crafty Quilter  
 Crow Tribe  
 Mr. & Mrs. Bob Curtis  
 Curves for Women  
 Custom Cowboy Shop  
 Daisy Manufacturing Company, Inc.  
 Days Inn

Durango & Silverton Narrow Gauge Railroad Museum  
 Embassy Suites Hotel  
 Excalibur Hotel & Casino  
 Mr. & Mrs. Peter Fillerup  
 Frost Fast Photo  
 Gainan's Flowers and Gifts  
 Shelia Goodwin  
 Mr. Bruce Graham  
 Hedge Music-Powell  
 The Herman Family  
 HF Bar Ranch  
 Holiday Motel  
 Mr. Jeff Hopkins  
 Images of Nature  
 Indian Territory  
 Irma Hotel  
 JR's Fashions For Men  
 Kelly Inn  
 Tom & Paula Keltner  
 Mr. F. "Slim" Kohler  
 Leupold & Stevens, Inc.  
 Lido Gallery  
 Marlin Firearms Company  
 Martin-Harris Gallery  
 Mr. William Matthews  
 Mr. & Mrs. Nick A. Misciagna  
 George & Marcy Mongon  
 Mountain West Trading Company  
 Museum Selections  
 Mustard's Last Stand  
 Nedra Matteucci

New West Furniture  
 Mr. James E. Nielson  
 Mr. & Mrs. Denley Norman  
 Northern Gardens Greenhouse & Nursery  
 O.C. Tanner  
 Olde General Store  
 Olive Glenn Golf & Country Club  
 Omni Cancun Hotel & Villas  
 Mr. & Mrs. Geoff Parker  
 Parson's Pillow  
 Mr. & Mrs. Gary Parsons  
 Mr. Larry Pirnie  
 Pizza On the Run  
 Plush Pony  
 The Pollard Hotel  
 Prairie Rose  
 Rainbow Park Motel  
 Mr. William H. Rankin  
 Mr. & Mrs. Eugene W. Reber  
 Red Canyon River Trips  
 Remington Arms Company, Inc.  
 Ms. Karen Riley & Mr. Ernie Olmstead  
 Mr. & Mrs. Charles Ringer  
 Mr. & Mrs. William P. Rohrbach  
 Mr. Jeffrey B. Rudolph  
 Mr. Michael D. Schneider  
 Mr. & Mrs. Edward A. Schwartz  
 Ms. Tamara Schweigert

Mr. & Mrs. Robert Seabeck  
 Shoshone Canyon Tire Co.  
 Mr. Joe Simek  
 Mr. Ronald L. Simek  
 Alan K. & Ann S. Simpson  
 Simpson Gallagher Gallery  
 Mr. & Mrs. Jack L. Smith  
 Stefan's Restaurant  
 Strater Hotel  
 Sturm, Ruger & Co., Inc.  
 Amb. & Mrs. Michael J. Sullivan  
 Sunlight Archery  
 Sunlight Sports  
 Super 8 - Cody  
 Mr. & Mrs. Harold R. Tate  
 Teton Pines Resort  
 Timber Creek Interiors Furniture & Design  
 Tuscany  
 Uptown Motel  
 The Village Shoppe  
 Waddell Trading Company  
 Wayne's Boot Shop  
 Mr. & Mrs. William D. Weiss  
 Wendy's  
 Westin Riverwalk Hotel  
 Mrs. Marylou Whitney  
 Ms. Kathy Wipfler  
 Wyoming Buffalo Company  
 Anne Young



# VOLUNTEERS

Liz Brink  
*President*

Jim Connor  
*Board Member-at-Large*

Mary Duggleby  
*Board Member-at-Large*

Marilyn Jensen  
*Secretary*

Knox Pannill  
*Board Member-at-Large*

Charley Phillips  
*Frontier Festival Chair*

Georgia Safford  
*Vice President*

Irene Schultz  
*Board Member-at-Large*

Kathy Taggart  
*Patron's Ball Chair*

Susan Ahalt

Darin Alexander

Joan Anderson

Jack Atkins

Ann Ayres

Dan Ayres

Rob Balsam

Jim Barrett

Linda Barrett

John Barrus

Josh Baugher

Darren Beier

Melodie Beier

Janette Bell

Sharen Benner

Shirley Benson

Gwendolyn Boehme

Yoshiko Bogard

Phyllis Bohm

Sharon Bothwell

Liz Brink

John Brouillette

Joan Butchart

Jill Carow

Patricia Catsimanes

Donald Chomplin

Bonnie Chudaloff

Norma Jean Clayton

Gwynne Clements

Leigh Coffin

John Collar

Mona Collar

Anita Comstock

Richard Conger

Robert Connolly

Cynthia Connor

James Connor

Augusta Conrad

Juletta Corbin

Debbie Cram

Dana Cranfill

Jenna Crawford

Bob Darling

Cheryl Darling

Joe Desson

Julia Dowling

Dorothy Downes

Jim Downes

Mary Duggleby

Bryan Edwards

Martha Edwards

Betty Finley

Kathryn Flitner

Dave Flurkey

Jo Frederickson

Reva Friedly

Jean Friesen

Steve Garbe

Jim Garry

Karen Gibbons

Shelia Goodwin

Claudina Graham

Sue Granger

Mary Louise Greever

Julie Haglund

Megan Haglund

Jennie Harris

Carol Hartung

Lucy Harvey

John Hawk

Kitty Hawk

Helen Helms

Wayne Henry

Sherrie Hettinger

James Horvath

Andrew Houze

Bill Hovland

Wayne Hudson

Karen Huge

Doug Hunter

Rae Hunter

Warren Hunter

Lisa Jackson

Lema Jamieson

Helen Janssen

Elizabeth Jenkins

Evelyn Jenkins

Marilyn Jensen

Donna Johnson

Melissa Johnson

Lolly Jolley

Erin Jones

Pat Jordan

Leslie Keltner

Betsy Kendall-Browne

Keith Kendall-Browne

Donna Kenney

Charles Kepler

Ursula Kepler

Betty Kercher

Artie Kirkpatrick

Gail Knapp

Natalie Koontz

Randy Krier

Becky Larrew

J. R. LaRue

Anton Lehman

Shelly Lehman

Tom Lewis

Ginny Lippiello

Melanie Lovelace

Kathryn Madaus

Bryan Malody

Wallace Manning

Bette March

Cathy Marine

Darlene McCarty

Tina McCarty

Phyllis McCormick

Bruce McDonald

Mary F. McDonald

Mary Lou McDonald

Jim McNiece

Phyllis McNiece

Alice Mentock

Eleanor Messer

Mary Moir

Patricia Morphew

Minnie Moser

Love Murray

Roger Murray

Vernice Myers

Keith NeVille

Lora Newcomer

Jacque Nieters

Kathie Noblette

Debbie Oakley-Simpson

Edgar O'Hair

Marilyn O'Hair

Jane Pannill

Knox Pannill

Sharee' Paquette

Laurie Parker

Amanda Patterson

Virginia Pearson

Charley Phillips

Marianne Pickering

Lelani Synder Pillsbury

Lynn Pitet

Patrick Pitet

Gerry Pladson

Phyllis Pond

Harriet Potter

Steve Potter

Sharon Powers Anderson

Lois Purvis

Cindy Rankin

George Regan

Dae Renaud

Echo Renner

Bob Richard

George Risberg

Beverly Robertson

Jay Roelen

Jerry Roelen

Betty Jean Rogers

Jane Rose

Georgia Safford

Arne Sandberg

June Sandberg

Elysa Schiltz

Russell Schloss

Jaime Schmeiser

Karl Schnackenberg

Michael Schneider

Linda Schoening

Steve Schrepferman

Bonnie Schultz

Irene Schultz

Malavika Shrikhande

Marlene Sibley

Paul Sibley

Lila Sidwell

Linda Siligato

M. A. "Ace" Sims

Barbara Smith

Sandra Stafford

Lura Steele

Clifford Steiner

Jackie Steiner

Marian Swartz

Kimber Swenson

Betsy Taggart

Jim Taggart

Kathy Taggart

Phyllis Taggart

Marilyn Taylor

Larry Thomas

Jodie Thompson

Margot Belden Todd

Jeff Tornow

Leonard Underland

Martha Jo Vanoni

Shirrel VanTassel

Jim Vickonoff

Vernel Wagner

Jean White

Candy Whitt

Hub Whitt

Jeri Wilder

Kathryn Williams

Marcia Williams

Mary Williams

Jeannie Yates



**ADMINISTRATION**

B. Byron Price  
*Executive Director*

Wally Reber  
*Associate Director*

Christine Houze/Cheryl Henry  
*Executive Assistant to the Board*

Gina Schneider  
*Executive Assistant to the Director*

Connie Miller  
*Receptionist*

**ADMISSIONS**

Jessie M. Jackson  
Jan Martin  
Barbara M. Reid  
Helen G. Wichern  
Sylvia Jenkins  
Beverly Robison  
Dorothy Cullivan  
Tracey Turner  
Stacey Schroeder  
Marilyn Lanchbury  
*Admissions Clerks*

**BUILDING AND GROUNDS**

Paul R. Brock  
*Facilities Manager*

Neal M. Akes  
Mike Warner  
Phil Anthony  
Chris Berrey  
*Maintenance*

Nevin Janssen  
*Maintenance Helper*

Dennis Barhaug  
*Carpenter*

Pat Ankrom  
Matt Bree  
*Assistant Carpenter*

Rich Herman  
*Grounds Supervisor*

Jennifer Pollock

Todd Schneider  
Jason Cousins  
Nick Piazza  
Sam Kruger  
Ryan Preator  
JD Nose  
Chris Dunks  
Justin Gerlach  
Mikel Marty  
*Yard Crew*

Roy B. Bruce  
*Custodial Supervisor*  
Ron Highland  
Bryan Hendricks  
*Custodians*

Herb Fowlkes  
Leah Anderson  
Mike Kinder  
Kristen Kenney  
Gene Mitchell  
Thomas Morris  
Allan Skinner  
Simon Domingez  
Brandon Herd  
Mike Kellogg  
Carolyn Payne  
Lee Brinkerhoff  
Greg Dooley  
Gary Downer  
Amanda Martin  
Shantel Parker  
Sheri Sather  
Michael Cape  
Dan Sparks  
Jacob Montgomery  
Zachary Logan  
David McGregor  
Erika Doane  
*Custodial Crew*

**BUSINESS AND FINANCE**

Margaret J. Kath  
*Accounting Manager*

Clint Roberts  
*Staff Accountant*

Wanda Freeman  
Kristi Keyes  
*Accounting Assistants*

Tiffany Udem  
*Seasonal Accounting Clerk/Data Entry*

**COLLECTIONS**

Joanne M. Patterson/Elizabeth M. Holmes  
*Registrar*

Elizabeth M. Holmes/Ann Marie Donoghue  
*Associate Registrar*

Connie Vunk  
*Collections Manager*

Gary L. Miller  
*Assistant Collections Manager*

Fay Bisbee/Suzanne Warner  
*Registration Assistant*

Candy Whitt  
Betty Shem  
*Packers*

Jeff Carstens  
*Intern*

**COMMUNICATIONS**

Thom Huges  
*Director of Communications*

Jan Jones  
*Public Relations Aide*

Marik Berghs/ Barbara Foote Colvert  
*Publications Coordinator*

Jan Woods Krier  
*Art Director*

Robin Catterton; Kimber Swenson  
*Interns*

**CURATORIAL**

Robert Pickering, Ph.D.  
*Collier-Reed Deputy Director for Collections and Education*

Paul Fees, Ph.D.  
*Senior Curator: Ernest J. Goppert Curator, Buffalo Bill Museum*

Sarah E. Boehme, Ph.D.  
*John S. Bugas Curator, Whitney Gallery of Western Art*

Emma I. Hansen  
*Curator, Plains Indian Museum*

Simeon Stoddard  
*Robert W. Woodruff Curator, Cody Firearms Museum*

Nathan E. Bender  
*Housel Curator, McCracken Research Library*

Charles R. Preston, Ph.D.  
*Curator, Draper Museum of Natural History*

Frances B. Clymer  
*Librarian*

Lynn Houze  
*Curatorial Assistant, Secretary, Buffalo Bill Museum*

Rebecca West  
*Curatorial Assistant, Whitney Gallery of Western Art, Plains Indian Museum*

Debbie Steele/Walt Hartung  
*Curatorial Assistant, Draper Museum of Natural History*

Warren Newman  
*Curatorial Assistant, Cody Firearms Museum*

Cheryl Henry/Marguerite House  
*Administrative Assistant to Deputy Director of Collections and Education*

Anne Marie Shriver  
*Curatorial Secretary, Plains Indian Museum and Registration Secretary*

Marguerite House/Tracy Livingston  
*Curatorial Secretary, Whitney Gallery of Western Art, McCracken Research Library/Registration Secretary*



Tasha Skinner  
*Curatorial Secretary, Cody  
Firearms Museum, Draper  
Museum of Natural History*

Rebecca Menlove, Curatorial  
*Assistant, Plains Indian Museum  
Reinstallation Project*

Lynn Pitet  
*Assistant Librarian*

Patricia Baumhover  
*Library Assistant*

Mitch McCrea, Pamela Foster,  
Sarah Laughlin, Edie  
Jacobsen, Arwen Nuttall,  
John Berland  
*Interns*

#### DEVELOPMENT

George Mongon  
*Director of Development*

Betty Kercher/Joanne  
Patterson  
*Grants Manager*

Lorie Malody  
*Capital Campaign Associate*

Suzanne P. Johnson  
*Executive Secretary to  
Development*

#### EDUCATION

Marcia Britton-Wolter  
*Director of Education*

Lillian Turner  
*Public Programs Coordinator*

Gretchen Henrich  
*Children's Program Coordinator*

Tasha Skinner  
*Programs Assistant*

Karen I. Schnackenberg  
*Tours and Outreach Coordinator*

Trent Reed  
*Education Department Secretary*

Stacey Webber, Shirley Linder  
*Interns*

Josh Baugher, Brian Mathews,

Shelley Power Good  
*AV Assistants*

Rebecca Menlove  
Jason Jones  
Heather Stewart  
*Museum Studies*

#### GREAT ENTERTAINER EATERY

Mary Wright  
*Catering/Stock House  
Supervisor*

Janeen Grove  
*Eatery Supervisor*

Daniel Webber  
Matt Peterson  
John Cody  
Kathryn Clucas  
Joy Williams  
Beau Daniels  
Ted Hoagland  
Bailey Ramsey  
Bethany Taylor  
Shelly Bales  
Tory Beemer  
Trista Neddermeyer  
Cody Schwarz  
Erin McKenzie  
Kenny Stott  
Bailey Nelson  
Melodie Beier  
Bernita Marsico  
Donna Daughtery  
Leslie Maslak  
*Eatery Food Service*

#### MEMBERSHIP

Jane Sanders  
*Director of Membership*

Dena Hollowell/Waddy Colvert  
*Research Assistant, Cody  
Firearms Museum*

Jill Osiecki  
*Special Events Coordinator*

Norma Strand  
*Membership*

#### MUSEUM SELECTIONS

Dean Swift  
*Marketing Manager*

Kelly Webber  
*Operations Manager*

Delores A. Platteter  
*Receiving Clerk*

Sheila Schmidt  
*Secretary*

Deanna Eide  
*Shipping Clerk*

Betty Lou Cousino  
Jean R. Cox  
Darlene Matthews  
Betty Ostby  
Virginia Qualls  
Sylvia Martoglio  
Jennifer Turner  
Manda Lenik  
Jody Horvath  
Jackie Ballou  
Helen Johnson  
Katie Kenney  
Matt Peterson  
Carolyn Jorgensen  
Dolly Dewing  
Lucas Edwards  
Marilyn Hanley  
Marie Pastorino  
Jennifer Kuper  
Norma Strand  
*Gift Shop Clerks*

#### PHOTOGRAPHY

Devendra S. Shrikhande/Chris  
Gimmeson  
*Photography Manager*

Chris Gimmeson/Sean  
Campbell  
*Museum Photographer*

Darin Alexander/Dave Thorne  
*Digital Photographer*

#### PREPARATION

Leo A. Platteter  
*Preparator*

#### SECURITY

Garry H. Benner  
*Chief of Security*

Cynthia S. Akes  
Gary Brown

Randy Feathers  
Monte McClain  
Dave Schwarz  
Gene Wright  
Sandy Scott  
*Security Officers*

Lois Barker  
Ricky Fowler  
Lyle Hanson  
James Hilger  
Ernie Jackson  
Paul James  
Lloyd Johnson  
Kathryn A. Morris  
Betty Shem  
John Shuler  
Bruce Holmes  
Charles Peterson  
Wayne Williams  
Steve Cresswell  
Lori Swanson  
John Wickelman  
Russ Scott  
Bill Colvert  
Barbara Foote Colvert  
Jason Kamm  
Miles Mathews  
Shannon Zahller  
Sanford Gelzer  
Gill Curry  
Tom Lewis  
Raymond Floriano  
Hugh Brink  
Lacey Warner  
Guy Gertsch  
Adam Longo  
Bob Sherman  
Tad Wille  
Chris Brown  
Jeff Carlson  
Caleb Graham  
Robert Jacobs  
*Gallery Guards*

#### SYSTEMS

John Gallagher  
*Information Technical  
Coordinator*

Devendra Shrikhande  
*Web Master*

Christopher Nelson  
Johan Cronholm  
*Information Technologists*

Patricia Fazio  
Anne Marie Shriver  
*Web Content Developers*



## FINANCIAL REVIEW

- 2 Management's Discussion and  
Analysis of Financial Condition
- 3 Independent Auditors' Report
- 4 Statements of Financial Position
- 5 Statements of Activities
- 6 Statements of Cash Flows
- 7 Notes to Financial Statements



MANAGEMENT'S DISCUSSION AND ANALYSIS  
OF FINANCIAL CONDITION

In the following audited financial statements of the Buffalo Bill Memorial Association, also known as the Buffalo Bill Historical Center, you will be able to review our financial progress and our activities for the year ending December 31, 2000. While we encourage you to review this information in depth, we call your attention to the following highlights.

*Net Assets*

The Buffalo Bill Historical Center's Total Net Assets have reached \$128,779,691, due to non-current contributions receivable increasing by \$8,004,734. This increase is largely comprised of planned gifts credited to A Campaign to Secure the Future.

*A Campaign to Secure the Future*

This is the Center's fundraising initiative that is in a very healthy state. A Campaign to Secure the Future surpassed the original campaign goal of \$38,650,000 by raising a cumulative total (including prior gifts and irrevocable conditional promises) of \$39,863,029. That \$38.65 million goal was determined by the initial plans and concept of the construction project. Due to the scope of the project enlarging and, of course, the original estimates not holding up because costs were less than, the campaign's goal has been increased to \$55,000,000. Keep in mind that this is the absolutely largest bricks & mortar project (both in cost and square footage) in the history of the Buffalo Bill Historical Center. The Draper Museum of Natural History is at the forefront of an international trend in which natural history museums will look at the relationships between humans and nature. The Draper will tie all of our museums together for the future, giving us a healthy and vibrant start in this new century. We will educate, entertain, and positively meet the diverse needs and interests of our varied audiences. Because such a large part of our funding is in the form of pledges and planned gifts, we are looking at bridge financing for the project in the form of a bond issue in the coming year until those campaign gifts are realized.

*Endowment and Investments*

Including both additions and distributions, fair value of the Center's investments decreased by 5.56% or \$2,643,274 during 2000 to a total of \$44,927,887. While you might guess this is a result of the general market trends in 2000, it actually was a result of unrestricted investments being used to fund the current capital construction. Buildings and improvements increased by \$7,609,607 - a number largely reflecting the Plains Indian Museum reinstallation and Central Utilities Plant addition. Construction in progress totals \$5,383,912 on the Draper Museum of Natural History.

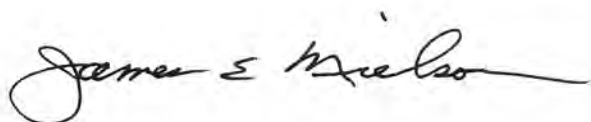
*Technology*

The Association is meeting the challenges of the ongoing digital revolution. We recognize the importance of this technology and the fact that this will be a continuing challenge in the years ahead. From over one million dollars in grants we spent \$310,152 this year and a cumulative total of \$430,409 to fund our website, the digitization of our collections and other interactive technology initiatives.

*Admissions*

The Buffalo Bill Historical Center continues to implement a broad-spectrum marketing plan to keep drawing new audiences to the museums. Using our budget (with great help from the Park County Travel Council grants) for carefully planned national and regional media buys and concentrating on travel-oriented venues and travel decision-makers, the advertising campaign seeks out the travel planners across the country. Add to that a growing effort to attract tour operators (bringing 10% of our visitors) and working harder to attract tourists already in the area, we are vigorously attacking recent visitation decreases. The three major reasons we saw those decreases in 2000 were 1) the "drought and forest fire season," 2) road construction between Cody and Yellowstone, and 3) the Plains Indian Museum was closed for the first six months of the year. If you looked at network news last August, you got the impression the entire western quarter of the nation was ablaze. We helped the Park County Travel Council and the Wyoming Division of Tourism with a late-season "anti-fire" message to counteract the misleading national media reporting. If you compare attendance with last year, you see a dramatic drop-off in August and September, obviously attributable to the media's reports of forest fires. Road construction between Cody and Yellowstone continued with vigor in 2000. One call to AAA and the prudent traveler chooses a different route into or out of the park. Yellowstone's east gate reported an 11% decrease for the year. We lost a small percentage due to the temporary closure of the Plains Indian Museum, exemplified by a marked turnaround in mid-June. Incidentally, international travel has been in a downward trend for the past year due to the very strong dollar. Combine those decreases with road construction and with our forest fire season (as the nation's news media entertained the world with misleading reports of forest fire problems), admissions decreased by 2.50%. Revenues were \$1,595,062, a decrease of 5.08% over 1999.

The Memorial Association's Finance Committee consults with museum management bi-monthly and with the independent auditors annually to monitor their respective controls and review the financial reporting process.



James E. Nielson  
Chairman, Finance Committee  
Buffalo Bill Memorial Association



Eugene W. Reber  
Associate Director  
Buffalo Bill Historical Center



INDEPENDENT AUDITORS' REPORT

The Board of Trustees  
Buffalo Bill Memorial Association:

We have audited the statements of financial position of Buffalo Bill Memorial Association as of December 31, 2000 and 1999, and the related statements of activities and cash flows for the years then ended. These financial statements are the responsibility of the Association's management. Our responsibility is to express an opinion on these financial statements based on our audits.

We conducted our audits in accordance with auditing standards generally accepted in the United States of America. Those standards require that we plan and perform the audit to obtain reasonable assurance about whether the financial statements are free of material misstatement. An audit includes examining, on a test basis, evidence supporting the amounts and disclosures in the financial statements. An audit also includes assessing the accounting principles used and significant estimates made by management, as well as evaluating the overall financial statement presentation. We believe that our audits provide a reasonable basis for our opinion.

In our opinion, the financial statements referred to above present fairly, in all material respects, the financial position of Buffalo Bill Memorial Association at December 31, 2000 and 1999, and the results of its activities and its cash flows for the years then ended in conformity with accounting principles generally accepted in the United States of America.

KPMG LLP

Billings, Montana  
April 19, 2001



# BUFFALO BILL MEMORIAL ASSOCIATION

## STATEMENTS OF FINANCIAL POSITION DECEMBER 31, 2000 AND 1999

ASSETS	2000	1999
Current assets:		
Cash and cash equivalents	\$ 1,561,025	\$ 790,769
Accounts and interest receivable	83,642	57,945
Inventories	1,003,757	1,015,662
Prepaid expenses	81,341	99,211
Current portion of contributions receivable	2,532,994	2,556,123
Total current assets	5,262,759	4,519,710
Noncurrent assets:		
Contributions receivable, less current portion	13,299,811	5,295,077
Investments	44,927,887	47,571,161
Property and equipment, net of accumulated depreciation	24,949,180	17,674,033
Collections	41,621,510	38,867,391
Total assets	\$ 130,061,147	\$ 113,927,372
LIABILITIES AND NET ASSETS		
Current liabilities:		
Accounts payable and accrued expenses	\$ 1,040,878	\$ 380,476
Current portion of notes payable	70,575	57,701
Total current liabilities	1,111,453	438,177
Noncurrent liabilities:		
Notes payable, less current portion	170,003	142,502
Net assets:		
Unrestricted	27,028,771	26,408,625
Temporarily restricted	78,038,096	63,355,278
Permanently restricted	23,712,824	23,582,790
Total net assets	128,779,691	113,346,693
Total liabilities and net assets	\$ 130,061,147	\$ 113,927,372

*See accompanying notes to financial statements.*



# BUFFALO BILL MEMORIAL ASSOCIATION

## STATEMENTS OF ACTIVITIES YEARS ENDED DECEMBER 31, 2000 AND 1999

	2000	1999
Changes in unrestricted net assets:		
Revenues and gains:		
Contributions	\$ 1,137,165	\$ 1,087,916
Contributed services and property	141,356	150,581
Admissions charges	1,595,062	1,680,396
Auxiliary activities	1,947,360	1,897,663
Fees	642,896	631,579
Investment income (net of investment expense of \$152,414 and \$138,614 for 2000 and 1999, respectively)	612,832	892,910
Realized and unrealized gain on investments, net	225,824	1,536,401
Other	1,389	3,360
	6,303,884	7,880,806
Net assets released from restrictions:		
Expiration of time restrictions	1,058,385	706,767
Satisfaction of program restrictions	1,597,412	985,265
	2,655,797	1,692,032
	8,959,681	9,572,838
Expenses and losses:		
Curatorial and conservation	895,336	733,735
Collections and exhibits	976,261	758,383
Research activities	56,552	74,875
Membership activities	483,465	256,284
Educational programs	532,454	469,146
General and administrative	1,571,239	1,493,296
Physical plant and security	1,708,501	1,282,393
Fundraising activities	425,467	383,599
Auxiliary activities	1,609,168	1,554,885
Reclassification of unrestricted net assets used to acquire property and equipment	81,092	38,047
Total expenses and losses	8,339,535	7,044,643
Increase in unrestricted net assets	620,146	2,528,195
Changes in temporarily restricted net assets:		
Contributions	14,946,648	4,285,750
Contributed property	15,812	14,036
Contributed collections	1,985,650	3,025,020
Auxiliary activities	2,458	—
Fees	84,322	39,681
Investment income (net of investment expense of \$31,594 and \$30,273 for 2000 and 1999, respectively)	212,372	215,205
Realized and unrealized gain on investments, net	6,360	233,999
Gain (loss) on sale of collections	4,105	(22,069)
Loss on sale of property and equipment	(204)	(35,126)
Reclassification of unrestricted net assets used to acquire property and equipment	81,092	38,047
Net assets released from restriction	(2,655,797)	(1,692,032)
	14,682,818	6,102,511
Changes in permanently restricted net assets:		
Contributions	21,146	418,095
Realized and unrealized gains on investments, net	108,888	1,003,980
Increase in permanently restricted net assets	130,034	1,422,075
Increase in net assets	15,432,998	10,052,781
Net assets at beginning of year	113,346,693	103,293,912
Net assets at end of year	\$ 128,779,691	\$ 113,346,693

See accompanying notes to financial statements.



STATEMENTS OF CASH FLOWS  
YEARS ENDED DECEMBER 31, 2000 AND 1999

	2000	1999
Cash flows from operating activities:		
Increase in net assets	\$ 15,432,998	\$ 10,052,781
Adjustments to reconcile increase in net assets to net cash provided by operating activities:		
Depreciation	798,453	574,218
Unrealized loss (gain) on investments, net	1,242,165	(1,930,125)
Realized gain on sales of investments, net	(1,583,237)	(844,255)
Loss on sale of property and equipment	204	35,126
Loss (gain) on sale of collections	(4,105)	22,069
Contributions in kind	(6,988,532)	(3,956,950)
Contributions restricted for long-term investment	(21,146)	(418,095)
Change in:		
Accounts and interest receivable	(25,697)	2,104
Inventories	11,905	(17,705)
Prepaid expenses	17,870	(23,792)
Contributions receivable	(7,981,605)	(1,852,390)
Accounts payable and accrued expenses	660,402	(300,030)
Net cash provided by operating activities	<u>1,559,675</u>	<u>1,342,956</u>
Cash flows from investing activities:		
Proceeds from sales of investments	12,652,734	5,344,920
Purchases of investments	(4,665,506)	(2,829,848)
Proceeds from sale of property and equipment	150	—
Purchases of property and equipment	(8,073,954)	(3,715,393)
Proceeds from sales of collections	9,305	7,931
Purchases of collections	(773,669)	(414,890)
Net cash used in investing activities	<u>(850,940)</u>	<u>(1,607,280)</u>
Cash flows from financing activities:		
Contributions restricted for long-term investment	21,146	418,095
Proceeds from issuance of notes payable	358,393	261,620
Repayment of notes payable	(318,018)	(291,797)
Net cash provided by financing activities	<u>61,521</u>	<u>387,918</u>
Net increase in cash and cash equivalents	770,256	123,594
Cash and cash equivalents, beginning of year	790,769	667,175
Cash and cash equivalents, end of year	<u>1,561,025</u>	<u>790,769</u>
Supplemental disclosures of cash flow information:		
Cash paid during the year for interest	\$ 15,455	\$ 17,675

See accompanying notes to financial statements.



NOTES TO FINANCIAL STATEMENTS  
DECEMBER 31, 2000 AND 1999

(1) SUMMARY OF SIGNIFICANT ACCOUNTING POLICIES

(a) ORGANIZATION

Buffalo Bill Memorial Association (the Association), located in Cody, Wyoming, is a not-for-profit entity which serves the public by advancing knowledge about the American West through acquiring, exhibiting and interpreting collections of artifacts and preserving their physical and contextual integrity. The Association depends upon contributions from the public, admission charges and auxiliary activities (museum gift shop and restaurant) to fund current operations.

The Association, also known as the Buffalo Bill Historical Center, is comprised of the McCracken Research Library, the Plains Indian Museum, the Buffalo Bill Museum, the Whitney Gallery of Western Art, the Cody Firearms Museum, and the Draper Museum of Natural History.

(b) BASIS OF PRESENTATION

The Association classifies net assets, revenues, expenses, gains and losses based on the existence or absence of donor-imposed restrictions.

Permanently restricted net assets are those subject to donor-imposed stipulations that they be maintained permanently by the Association. Generally, the donors of these assets permit the Association to use the interest and dividend income earned, if any, on related investments for general or specific purposes. A limited number of donors also allow the Association to use capital gains, if any, on related investments for general or specific purposes.

Temporarily restricted net assets are those subject to donor-imposed stipulations that may or will be met by actions of the Association and/or the passage of time.

Unrestricted net assets are those not subject to donor-imposed stipulations and donor-restricted contributions whose restrictions are met in the same reporting period.

A donor's gift may impose restrictions on otherwise unrestricted net assets. Such restrictions result in a reclassification of unrestricted net assets to permanently restricted or temporarily restricted net assets depending on the nature of the restriction.

Revenues are reported as increases in unrestricted net assets unless use of the related assets is limited by donor-imposed restrictions. Expenses are reported as decreases in unrestricted net assets. Gains and losses on investments and other assets or liabilities are reported as increases or decreases in unrestricted net assets unless their use is restricted by explicit donor stipulation or by law.

Expirations of temporary restrictions on net assets (i.e., the donor-stipulated purpose has been fulfilled and/or the stipulated time period has elapsed) are reported as reclassifications between the applicable classes of net assets.

(c) CASH EQUIVALENTS

The Association considers all highly liquid debt instruments with original maturities of three months or less to be cash equivalents.

(d) CONTRIBUTIONS AND GIFTS

Contributions, including unconditional promises to give, are recognized as revenues in the period received. Promises to give that are scheduled to be received after the balance sheet date are shown as increases in temporarily restricted net assets and are reclassified to unrestricted net assets when the cash is received and any purpose restrictions are met. Conditional promises to give are not recognized until they become unconditional, that is when the conditions on which they depend are substantially met. Contributions of assets other than cash are recorded at their estimated fair value. Contributions to be received after one year are discounted at an appropriate discount rate commensurate with the risks involved. Amortization of discount is recorded as additional contribution revenue in accordance with donor-imposed restrictions, if any, on the contributions.

It is the policy of the Association to report gifts of land, buildings and equipment as temporarily restricted support unless explicit donor stipulations specify that the donated assets are permanently restricted. Absent explicit donor stipulations about how long those long-lived assets must be maintained, the Association reports expiration of restrictions as the donated or acquired long-lived assets are depreciated.

The Association reports gifts of collection items as temporarily restricted support unless explicit donor stipulations specify that the donated collections are permanently restricted. Absent explicit donor stipulations about how long those collections must be maintained, the Association reports expiration of restrictions as the donated or acquired collections are deaccessioned.

— notes continue on next page



NOTES TO FINANCIAL STATEMENTS  
DECEMBER 31, 2000 AND 1999

(e) INVENTORIES

Inventories consist of museum gift shop merchandise for resale to the public. Inventories are valued at the lower of cost, computed on a weighted average, or net realizable value.

(f) PROPERTY AND EQUIPMENT

Property and equipment are recorded at cost. Depreciation is calculated using the straight-line method over the estimated useful lives of the assets, which generally approximates 15 to 60 years for buildings, 10 to 20 years for improvements and 3 to 20 years for equipment.

(g) COLLECTIONS

The Association capitalizes purchased collections at cost. Collections acquired by donation are capitalized at fair value at the date of donation. Proceeds from collection items sold are used to purchase other items for collections.

(h) INVESTMENTS

The Association reports equity securities having readily determinable fair values and all debt securities at fair value with unrealized gains and losses included in the statement of activities.

The Association has the intent and ability to hold its investments for greater than one year. Accordingly, all investments are classified as long-term.

(i) ALLOWANCE FOR DOUBTFUL ACCOUNTS

An allowance for doubtful accounts is provided based upon management's assessment of the collectibility of accounts and contributions receivable. No allowance for doubtful accounts was, in the opinion of management, necessary at December 31, 2000 or 1999.

(j) INCOME TAXES

The Association is exempt from Federal income taxes under Section 501(c)(3) of the Internal Revenue Code, except for income from sale of certain items by the Association's gift shop. Income taxes related to these sales were not material in 2000 and 1999.

(k) USE OF ESTIMATES

Management of the Association has made a number of estimates and assumptions relating to the reporting of assets and liabilities and revenues and expenses and the disclosure of contingent assets and liabilities to prepare these financial statements in conformity with accounting principles generally accepted in the United States of America. Actual results could differ significantly from those estimates.

(l) RECLASSIFICATIONS

Certain reclassifications have been made to the 1999 financial statements to conform to the 2000 presentation.



NOTES TO FINANCIAL STATEMENTS  
DECEMBER 31, 2000 AND 1999

(2) CONTRIBUTIONS RECEIVABLE

Contributions receivable at December 31 consist of the following:

	2000	1999
Cody, Wyoming house — contribution of 90% undivided interest in the property, net of retained life estate	\$ 1,345,500	\$ 1,345,500
Palm Springs, California house — contribution of 25% undivided interest in the property, net of retained life estate	237,500	237,500
Unconditional promises to give cash	14,249,805	6,268,200
	<u>15,832,805</u>	<u>7,851,200</u>
Less current portion	2,532,994	2,556,123
	<u>\$13,299,811</u>	<u>\$5,295,077</u>

Unconditional promises to give cash at December 31, 2000 includes approximately \$10.2 million due from two individuals.

Contributions receivable at December 31, 2000 become due as follows:

Due in less than one year	\$ 2,532,994
Due in one to five years	6,284,546
Due in more than five years	<u>7,015,265</u>
	<u>\$ 15,832,805</u>

The Cody, Wyoming house was contributed to the Association during 1995 by means of an irrevocable gift agreement which requires that, upon termination of the life estate, the Association must liquidate the property. The agreement states that 90% of the proceeds from sale is to be retained by the Association and 10% is to be transferred to the Cody Medical Foundation (not a related entity).

A 25% undivided interest in the Palm Springs, California house was contributed to the Association during 1995 by means of an irrevocable gift agreement which requires the property be liquidated upon termination of the life estate. The Association is entitled to 25% of the proceeds from the sale of the house.

The amounts recorded reflect the Association's interests in the properties (90% — Cody house; 25% — Palm Springs house) and are included in noncurrent assets in the accompanying statement of financial position.

Unconditional promises to give cash due after one year are recorded at their present value (discounted at 6%). The unamortized discount is \$6,868,327 and \$2,131,437 at December 31, 2000 and 1999, respectively. The accretion of the discount in subsequent years is reported as additional contribution in the net asset class in which the original promise was made.

(3) INVESTMENTS

Investments by investment type at December 31 consist of the following:

	2000	1999
Corporate stocks and bonds	\$ 33,095,496	\$ 30,127,427
Mutual funds	10,067,165	15,572,642
U.S. Government obligations	724,866	719,793
Other	1,040,360	1,151,299
	<u>\$ 44,927,887</u>	<u>\$ 47,571,161</u>

— notes continue on next page



NOTES TO FINANCIAL STATEMENTS  
DECEMBER 31, 2000 AND 1999

**(4) PROPERTY AND EQUIPMENT**

Property and equipment at December 31 are summarized as follows:

	<u>2 0 0 0</u>	<u>1 9 9 9</u>
Land, buildings and improvements	\$ 24,646,351	\$ 17,036,744
Furniture, fixtures and equipment	1,785,397	1,646,777
Construction in progress	5,383,912	5,067,350
	<u>31,815,660</u>	<u>23,750,871</u>
Less accumulated depreciation	6,866,480	6,076,838
	<u>\$ 24,949,180</u>	<u>\$ 17,674,033</u>

**(5) COLLECTIONS**

Collections at cost as of December 31 are summarized as follows:

	<u>2 0 0 0</u>	<u>1 9 9 9</u>
Artifacts, photos, memorabilia, etc.	\$ 22,286,435	\$ 21,378,136
Art and bronzes	19,335,075	17,489,255
	<u>\$ 41,621,510</u>	<u>\$ 38,867,391</u>

**(6) NOTES PAYABLE**

Notes payable at December 31 consist of the following:

	<u>2 0 0 0</u>	<u>1 9 9 9</u>
9% notes payable in quarterly installments totalling \$9,032 including interest, through 2002	\$ 70,593	\$ 98,763
9% notes payable in quarterly installments totalling \$4,384 including interest, through 2005	69,992	80,625
Other notes payable, interest rates ranging from 6.9% to 11.4%	99,993	20,815
	<u>240,578</u>	<u>200,203</u>
Less current portion	70,575	57,701
	<u>\$ 170,003</u>	<u>\$ 142,502</u>

The Association has a \$1 million unsecured line of credit, bearing interest at the Wall Street Journal prime rate (9.5% at December 31, 2000), due July 26, 2001, interest payable quarterly. There was no outstanding balance on this line at December 31, 2000 or 1999.

Notes payable totaling \$70,593 at December 31, 2000 consist of two related notes issued to fund the purchase of an artifacts collection. The notes are secured by the collection which has a carrying value of \$341,210.

Notes payable totaling \$69,992 at December 31, 2000 consist of three related notes issued to fund the purchase of an artifacts collection. The notes are secured by the collection which has a carrying value of \$162,000.

**NOTES TO FINANCIAL STATEMENTS  
DECEMBER 31, 2000 AND 1999**

Aggregate maturities of notes payable are as follows:

<u>Year ending December 31,</u>	
2001	\$ 70,575
2002	80,667
2003	42,048
2004	30,692
2005	16,596
	<u>\$ 240,578</u>

**(7) CONTRIBUTED SERVICES AND PROPERTY**

The Association records contributed services at fair value if the services received create or enhance nonfinancial assets or require specialized skills, are provided by individuals possessing those skills and would need to be purchased if not provided by donation. The Association records contributed property at estimated fair value at the date of contribution. Following is a summary of the nature of contributed services and property and their fair value during the years ended December 31:

	<u>2000</u>	<u>1999</u>
Legal services	\$ —	\$ 9,100
Accounting services	8,650	8,000
Development related services and property	148,518	147,517
	<u>\$ 157,168</u>	<u>\$ 164,617</u>

The Association also receives contributions of services that do not meet the criteria for recognition in the financial statements. Following is a summary of the nature and fair values of contributed services not recognized during the years ended December 31:

	<u>2000</u>	<u>1999</u>
Education docents services	\$ 23,392	\$ 27,261
Curatorial services	19,924	19,865
Administrative services	18,576	13,839
Collection services	12,537	8,331
Event support services	8,813	9,760
Other	5,003	4,600
	<u>\$ 88,245</u>	<u>\$ 83,656</u>

**(8) FAIR VALUE OF FINANCIAL INSTRUMENTS**

The Association is required to disclose the fair value for financial instruments, whether or not recognized in the statements of financial position. A financial instrument is defined as cash, evidence of an ownership interest in an entity, or a contract that both imposes a contractual obligation on one entity to deliver cash or another financial instrument to a second entity. The following methods and assumptions were used by the Association in estimating the fair value of its financial instruments:

*Financial Assets.* Due to the liquid nature of the instruments, the carrying value of cash approximates fair value. For all investments, the fair value is based upon quoted market prices. The fair value of accounts and interest receivable approximates book value as the Association expects contractual receipt in the near-term. The fair value of contributions receivable approximates book value as the Association records contributions receivable at their present value.

*Financial Liabilities.* The fair value of accounts payable and accrued expenses approximates book value due to contractual payment in the near-term. The fair value of notes payable approximates book value as the interest rates on the notes approximate the Association's current long-term borrowing rate.

*Limitations.* Fair value estimates are made at a specific point in time, based on relevant market information and information about the financial instrument. These estimates do not reflect any premium or discount that could result from offering for sale

— notes continue on next page



**NOTES TO FINANCIAL STATEMENTS  
DECEMBER 31, 2000 AND 1999**

at one time the Association's entire holdings of a particular instrument. Because no market exists for a significant portion of the Association's financial instruments, fair value estimates are based on judgments regarding comparable market interest rates, future expected loss experience, current economic conditions, risk characteristics of various financial instruments, and other factors. These estimates are subjective in nature and involve uncertainties and matters of significant judgment and therefore cannot be determined with precision. Changes in assumptions could significantly affect the estimates. Fair value estimates are based on existing balance sheet financial instruments without attempting to estimate the value of anticipated future business and the value of assets and liabilities that are not considered financial instruments.

**(9) NONCASH INVESTING AND FINANCING ACTIVITIES**

During the years ended December 31, 2000 and 1999, the Association received gifts of collections valued at \$1,985,650 and \$3,025,020, respectively. During the years ended December 31, 2000 and 1999, the Association received gifts of securities valued at \$5,002,882 and \$931,930, respectively.

**(10) TEMPORARILY RESTRICTED NET ASSETS**

Temporarily restricted net assets are available for the following purposes or periods at December 31:

	<u>2 0 0 0</u>	<u>1 9 9 9</u>
Collections	\$43,339,876	\$41,317,252
Curatorial and conservation	1,594,918	501,447
Research activities	222,594	162,323
Educational programs	164,997	213,440
Physical plant and security	23,403,906	18,387,811
Fund raising activities	130,776	—
Contributions receivable in periods after December 31	9,181,029	2,773,005
	<u>\$78,038,096</u>	<u>\$63,355,278</u>

**(11) PERMANENTLY RESTRICTED NET ASSETS**

Permanently restricted net assets are restricted to the following purposes at December 31:

	<u>2 0 0 0</u>	<u>1 9 9 9</u>
Investments in perpetuity, the interest and dividend income from which is expendable to support:		
General and administrative	\$ 15,671,105	\$ 15,658,305
Curatorial and conservation	4,479,466	4,383,377
	<u>20,150,571</u>	<u>20,041,682</u>
Investments in perpetuity, the interest and dividend income and capital gains from which are expendable to support:		
Collections	2,020,910	1,999,765
Educational programs	350,000	350,000
Curatorial and conservation	1,025,843	1,025,843
	<u>3,396,753</u>	<u>3,375,608</u>
Land required to be used for museum building	165,500	165,500
	<u>\$ 23,712,824</u>	<u>\$ 23,582,790</u>

**(12) EMPLOYEE BENEFIT PLAN**

The Association has a 403(b) savings plan for full-time employees who have completed one year of service. The Association is required to match employee contributions up to a maximum of 5% of each eligible employee's salary. The Association made contributions of \$80,343 and \$60,841 to the plan in 2000 and 1999, respectively.

NOTES TO FINANCIAL STATEMENTS  
DECEMBER 31, 2000 AND 1999

**(13) COMMITMENTS**

The Association has committed to purchase approximately \$400,000 of collections from an unrelated third party over the next two years. The Association has signed construction contracts for approximately \$13 million, of which it has expended approximately \$1.77 million.

**(14) SUBSEQUENT EVENT**

On March 26, 2001, the Association obtained a \$9 million unsecured line of credit bearing interest at the Wall Street Journal prime rate due March 26, 2002, interest payable monthly. Borrowings on the line of credit are expected to be used to fund construction of the Draper Museum of Natural History.





EDITOR:

Thom Huges

PRODUCTION COORDINATOR:

Barbara Foote Colvert

DESIGNER:

Barbara Foote Colvert

PHOTOGRAPHERS:

Chris Gimmeson

Sean Campbell