

The Five Coolest Features of Yellowstone

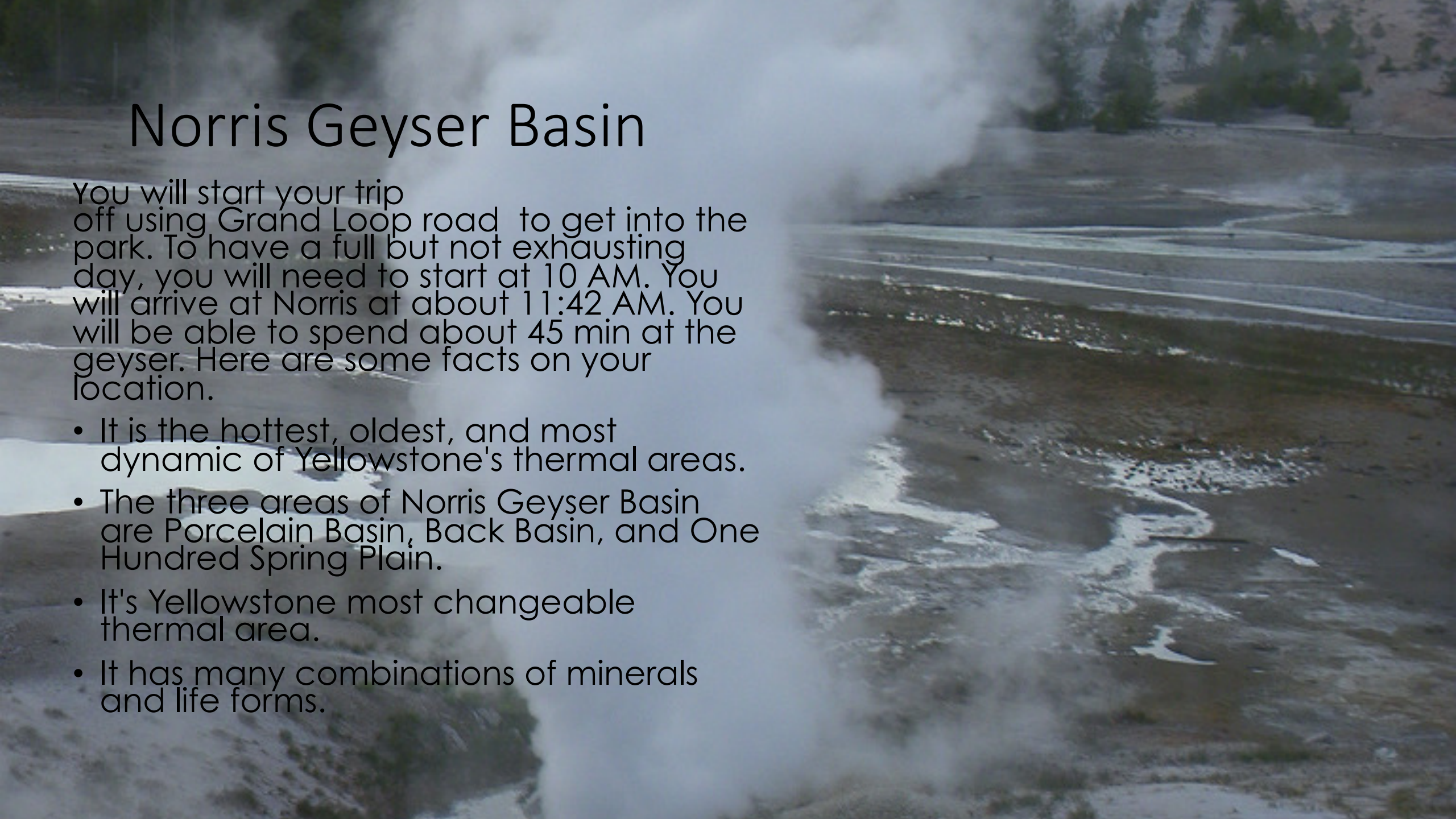
A large, circular, multi-colored hot spring in Yellowstone National Park. The central pool is a deep, vibrant blue-green, surrounded by a wide, shallow rim of yellowish-brown mineral deposits. The water's surface is slightly rippled, and the surrounding landscape is dry and rocky.

Shawntay Jones
Hannah Wood
Spring 2017

Norris Geyser Basin

You will start your trip off using Grand Loop road to get into the park. To have a full but not exhausting day, you will need to start at 10 AM. You will arrive at Norris at about 11:42 AM. You will be able to spend about 45 min at the geyser. Here are some facts on your location.

- It is the hottest, oldest, and most dynamic of Yellowstone's thermal areas.
- The three areas of Norris Geyser Basin are Porcelain Basin, Back Basin, and One Hundred Spring Plain.
- It's Yellowstone most changeable thermal area.
- It has many combinations of minerals and life forms.





Mammoth Hot springs

After visiting Norris you will come to Mammoth Hot springs, it took you about 41 min to get here. So now its 1:08 PM, you will be able to spend 1 hour here before you have to leave. Here are some facts on your location.

- A Tourist damaged mammoth hot springs of "medicinal" water.
- If you try to get medicinal water you will get a \$1,000 fine and a \$30 court processing fee.
- Why mammoth hot springs is cool.
- It's cool because its smelly.
- It's cool because its big.
- It's cool because its really hot.
- It's cool because it has pretty colors.

Midway geyser basin

- Now you are at midway geyser basin, it took you 80 minutes to get here now its 3:28, and you have 1 hour to look around. Here are some facts about your location.
- Facts about midway geyser basin.
- It has the beautiful excelsior geyser.

Some of its features include opal pool, Turquoise pool, and Grand Prismatic Springs.

- In the Grand Prismatic Spring of Midway Geyser Basin was a drone that was flown into the spring, and they did not ever find the drone.



Biscuit Basin

- Now you are at biscuit basin, it took you 9 minutes to get here so now its 3:37. You'll be able to spend 1 hour here. Here are some facts on your location.
- Facts about biscuit basin.
- Many biscuit basin features are gem like encrusted pools and geysers .
- Rusty geyser there is 202 degrees Fahrenheit.
- Shell geyser there was golden lined.
- Why is biscuit basin is cool?
- It's cool because its hot.
- It's cool because its has very pretty colors in it
- It's cool because its has some really cool geysers and hot springs.

Biscuit Basin geyser by m01229 (2013) <https://www.flickr.com/photos/39908901@N06/9416933859/>

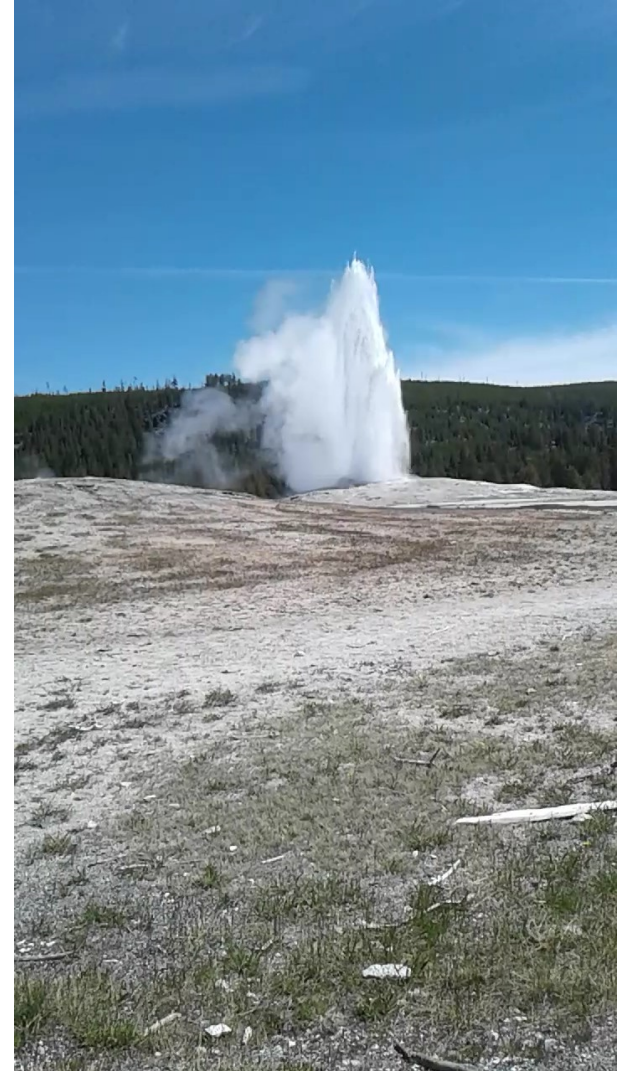
Attribution (<http://creativecommons.org/licenses/by/2.0/>)

Photo Attribution by PhotosForClass.com

Old Faithful

Now you are at Old Faithful, it took you about 9 min to get here and now its 4:46 PM . You can spend about an hour here to get a chance to see Old Faithful erupt. Here are some facts on your location.

- Some of the water coming out of Old Faithful is 500 years old.
- Old Faithful is one of the most predictable features of Yellowstone.
- Old faithful is One of Yellowstone's most famous features.
- Old Faithful was one of the first things the finders of Yellowstone saw.
- What's cool about Old Faithful.
- Old Faithful shoots water as high as 106 feet to 185 feet into the air.
- Old faithful can shoot 3,700 to 8,400 US gallons of water into the air.
- Old Faithful's eruptions can last 1 ½ to 5 minutes.



End of your Trip

- Its the end of your trip and your ready to go home, you have had a long day and have seen lots of features. You traveled for 3 hours and 21 min,
- And looked at all the Yellowstone features for 4 hours and 45 min.
- You started at 10 AM and it is now 5:46 PM and your trip is over.
- You will leave out of the park on Grand Loop road, and go home.
- I hope you enjoyed your trip! thank you, goodbye.



Bibliography

- Biscuit basin geyser by m01229 (2013)
<https://www.flickr.com/photos/39908901@N06/9416933859/> Attribution (<http://creativecommons.org/licences/by/2.0/>) Photo Attribution by PhotosforClass.com
- Norris Geyser Basin by J. Stephen Conn (2013)
<https://www.flickr.com/photos/jstephennconn/15797402538/> Attribution, Non Commercial (<http://creativecommons.org/liscence/by-nc/2.0/>) Photo Attribution by PhotosForClass.com